

Daily Summary for Amman Stock Exchange

VALUE TRADED (JD)

	2023	2024	NET CHANGE	CHANGE (%)
Daily	8,220,115	7,269,855	-950,260	-11.56%
Cumulative (1/4-28/4)	102,768,140	87,668,707	-15,099,433	-14.69%
Cumulative (2/1-28/4)	636,906,437	373,042,415	-263,864,022	-41.43%

NO. OF SHARES TRADED

	2023	2024	NET CHANGE	CHANGE (%)
Daily	3,943,067	2,562,604	-1,380,463	-35.01%
Cumulative (1/4-28/4)	59,621,107	54,256,016	-5,365,091	-9.00%
Cumulative (2/1-28/4)	400,191,144	284,946,898	-115,244,246	-28.80%

NO. OF TRANSACTIONS

	2023	2024	NET CHANGE	CHANGE (%)
Daily	3,241	2,644	-597	-18.42%
Cumulative (1/4-28/4)	40,632	38,844	-1,788	-4.40%
Cumulative (2/1-28/4)	254,639	188,577	-66,062	-25.94%

SOME FINANCIAL RATIOS FOR THE ASE (28/4/2024)

SECTOR	P/E	P/BV	DIVIDEND YIELD (%)	TURNOVER (%)
FINANCIAL	8.773	0.750	5.997	0.019
SERVICES	11.399	1.275	6.065	0.079
INDUSTRY	7.834	1.510	5.743	0.109
OVERALL	8.236	0.982	6.208	0.042

STOCK PRICE INDEX WEIGHTED BY FREE FLOAT MARKET CAPITALIZATION (1999=1000)

	THURSDAY 25/04/2024	SUNDAY 28/04/2024	% CHANGE	
			DAY BEFORE	YTD
GENERAL	2440.7	2431.2	-0.39%	0.00%
FINANCIAL	2636.4	2636.5	0.00%	-3.39%
SERVICES	1692.8	1657.0	-2.11%	0.79%
INDUSTRY	5118.4	5163.7	0.88%	9.43%

STOCK PRICE INDEX WEIGHTED BY FREE FLOAT MARKET CAPITALIZATION ASE20 (2014=1000)

	1320.4	1314.1	-0.48%	0.40%
--	--------	--------	--------	-------

Total Return Index ASETR (2021=1074)

	1563.9	1573.6	0.62%	5.72%
--	--------	--------	-------	-------

STOCK PRICE INDEX WEIGHTED BY MARKET CAPITALIZATION (1991=1000)

	THURSDAY 25/04/2024	SUNDAY 28/04/2024	% CHANGE	
			DAY BEFORE	YTD
GENERAL	4475.6	4474.4	-0.03%	1.32%
BANKS	6453.5	6460.7	0.11%	-4.08%
INSURANCE	1321.9	1322.7	0.06%	2.94%
SERVICES	891.0	861.8	-3.28%	-1.92%
INDUSTRY	6223.5	6270.4	0.75%	9.88%

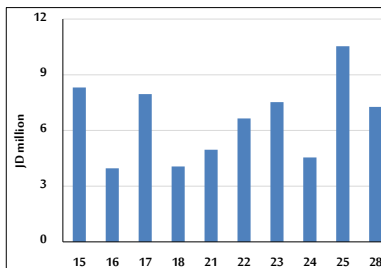
STOCK PRICE MARKET INDEX WEIGHTED BY FREE FLOAT MARKET CAP. (2012=1000)

	THURSDAY 25/04/2024	SUNDAY 28/04/2024	% CHANGE	
			DAY BEFORE	YTD
FIRST MARKET	1369.6	1362.9	-0.49%	0.29%
SECOND MARKET	820.9	825.2	0.52%	-4.52%

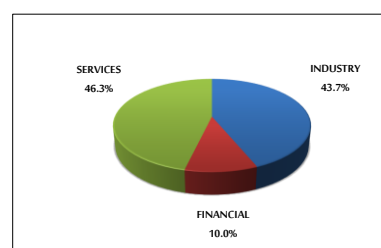
MARKET CAPITALIZATION (JD)

	17,013,155,540	17,007,337,565	-0.03%	0.40%
--	----------------	----------------	--------	-------

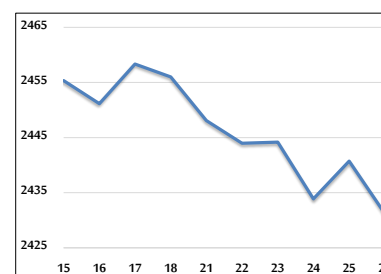
VALUE TRADED FROM 15/4 TO 28/4/2024



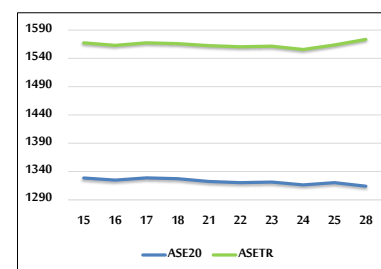
VALUE TRADED BY SECTOR SUNDAY 28/4/2024



GENERAL FREE FLOAT PRICE INDEX FROM 15/4 TO 28/4/2024



ASE20 and ASETR FREE FLOAT PRICE INDEX FROM 15/4 TO 28/4/2024



STOCK PRICE INDEX FROM 15/4 TO 28/4/2024

