

Daily Summary for Amman Stock Exchange

VALUE TRADED (JD)

	2023	2024	NET CHANGE	CHANGE (%)
Daily	4,761,757	3,200,039	-1,561,718	-32.80%
Cumulative (1/4-3/4)	18,552,822	9,881,549	-8,671,273	-46.74%
Cumulative (2/1-3/4)	552,691,119	295,255,257	-257,435,862	-46.58%

NO. OF SHARES TRADED

	2023	2024	NET CHANGE	CHANGE (%)
Daily	3,405,281	2,032,858	-1,372,423	-40.30%
Cumulative (1/4-3/4)	13,324,512	6,636,336	-6,688,176	-50.19%
Cumulative (2/1-3/4)	353,894,549	237,327,218	-116,567,331	-32.94%

NO. OF TRANSACTIONS

	2023	2024	NET CHANGE	CHANGE (%)
Daily	2,063	1,834	-229	-11.10%
Cumulative (1/4-3/4)	6,832	4,913	-1,919	-28.09%
Cumulative (2/1-3/4)	220,839	154,646	-66,193	-29.97%

SOME FINANCIAL RATIOS FOR THE ASE (3/4/2024)

SECTOR	P/E	P/BV	DIVIDEND YIELD (%)	TURNOVER (%)
FINANCIAL	8.903	0.760	5.918	0.030
SERVICES	11.958	1.337	5.536	0.042
INDUSTRY	7.292	1.405	0.297	0.036
OVERALL	8.131	0.969	4.139	0.033

STOCK PRICE INDEX WEIGHTED BY FREE FLOAT MARKET CAPITALIZATION (1999=1000)

	TUESDAY 02/04/2024	WEDNESDAY 03/04/2024	% CHANGE	
			DAY BEFORE	YTD
GENERAL	2437.0	2432.8	-0.17%	0.06%
FINANCIAL	2636.0	2637.7	0.06%	-3.34%
SERVICES	1751.6	1744.9	-0.38%	6.14%
INDUSTRY	4828.3	4812.2	-0.33%	1.98%

STOCK PRICE INDEX WEIGHTED BY FREE FLOAT MARKET CAPITALIZATION ASE20 (2014=1000)

	1315.4	1313.2	-0.17%	0.34%
--	--------	--------	--------	-------

Total Return Index ASETR (2021=1074)

	1535.3	1532.8	-0.17%	2.98%
--	--------	--------	--------	-------

STOCK PRICE INDEX WEIGHTED BY MARKET CAPITALIZATION (1991=1000)

	TUESDAY 02/04/2024	WEDNESDAY 03/04/2024	% CHANGE	
			DAY BEFORE	YTD
GENERAL	4433.9	4417.6	-0.37%	0.03%
BANKS	6549.2	6537.7	-0.18%	-2.94%
INSURANCE	1312.8	1312.9	0.01%	2.18%
SERVICES	900.4	900.1	-0.03%	2.44%
INDUSTRY	5941.5	5898.3	-0.73%	3.36%

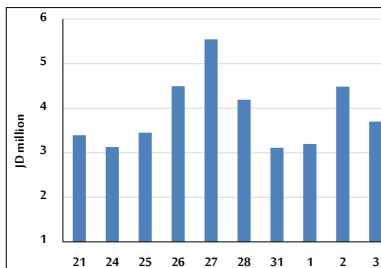
STOCK PRICE MARKET INDEX WEIGHTED BY FREE FLOAT MARKET CAP. (2012=1000)

	TUESDAY 02/04/2024	WEDNESDAY 03/04/2024	% CHANGE	
			DAY BEFORE	YTD
FIRST MARKET	1365.9	1363.8	-0.15%	0.35%
SECOND MARKET	832.6	831.4	-0.15%	-3.80%

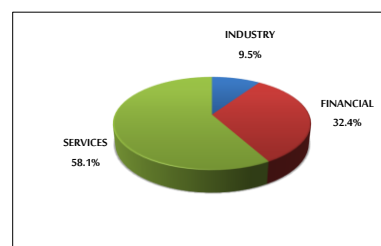
MARKET CAPITALIZATION (JD)

	16,860,550,323	16,814,201,839	-0.27%	-0.74%
--	----------------	----------------	--------	--------

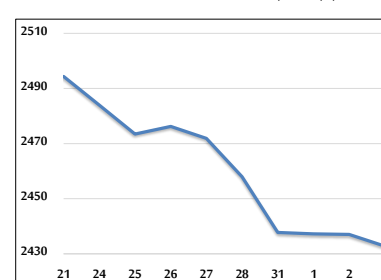
VALUE TRADED FROM 21/3 TO 3/4/2024



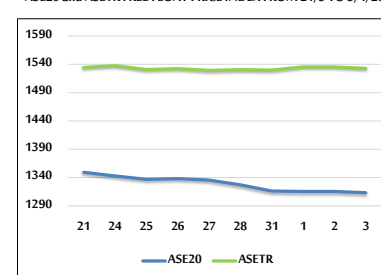
VALUE TRADED BY SECTOR WEDNESDAY 3/4/2024



GENERAL FREE FLOAT PRICE INDEX FROM 21/3 TO 3/4/2024



ASE20 and ASETR FREE FLOAT PRICE INDEX FROM 21/3 TO 3/4/2024



STOCK PRICE INDEX FROM 21/3 TO 3/4/2024

