

## Daily Summary for Amman Stock Exchange

### VALUE TRADED (JD)

	2022	2023	NET CHANGE	CHANGE (%)
Daily	3,787,690	3,403,109	-384,581	-10.15%
Cumulative (1/10-22/10)	82,156,236	74,307,147	-7,849,089	-9.55%
Cumulative (2/1-22/10)	1,650,246,322	1,248,857,822	-401,388,500	-24.32%

### NO. OF SHARES TRADED

	2022	2023	NET CHANGE	CHANGE (%)
Daily	2,943,474	2,264,271	-679,203	-23.07%
Cumulative (1/10-22/10)	59,853,505	77,222,526	17,369,021	29.02%
Cumulative (2/1-22/10)	948,223,919	916,207,303	-32,016,616	-3.38%

### NO. OF TRANSACTIONS

	2022	2023	NET CHANGE	CHANGE (%)
Daily	2,161	1,438	-723	-33.46%
Cumulative (1/10-22/10)	44,147	39,566	-4,581	-10.38%
Cumulative (2/1-22/10)	625,801	571,789	-54,012	-8.63%

### SOME FINANCIAL RATIOS FOR THE ASE (22/10/2023)

SECTOR	P/E	P/BV	DIVIDEND YIELD (%)	TURNOVER (%)
FINANCIAL	8.845	0.807	5.713	0.036
SERVICES	11.874	1.312	6.696	0.040
INDUSTRY	5.358	1.571	7.374	0.028
OVERALL	7.006	1.021	6.692	0.036

### STOCK PRICE INDEX WEIGHTED BY FREE FLOAT MARKET CAPITALIZATION (1999=1000)

	THURSDAY 19/10/2023	SUNDAY 22/10/2023	% CHANGE	
			DAY BEFORE	YTD
GENERAL	2424.1	2421.1	-0.12%	-3.22%
FINANCIAL	2683.5	2687.6	0.16%	-0.17%
SERVICES	1663.9	1657.3	-0.40%	-4.80%
INDUSTRY	4801.6	4772.6	-0.60%	-9.82%

### STOCK PRICE INDEX WEIGHTED BY FREE FLOAT MARKET CAPITALIZATION ASE20 (2014=1000)

	THURSDAY 19/10/2023	SUNDAY 22/10/2023	% CHANGE DAY BEFORE	% CHANGE YTD
	1304.7	1303.9	-0.06%	-3.08%

### Total Return Index ASETR (2021=1074)

	THURSDAY 19/10/2023	SUNDAY 22/10/2023	% CHANGE DAY BEFORE	% CHANGE YTD
	1483.7	1482.8	-0.06%	3.68%

### STOCK PRICE INDEX WEIGHTED BY MARKET CAPITALIZATION (1991=1000)

	THURSDAY 19/10/2023	SUNDAY 22/10/2023	% CHANGE	
			DAY BEFORE	YTD
GENERAL	4423.2	4411.7	-0.26%	-6.74%
BANKS	6564.3	6574.1	0.15%	-2.66%
INSURANCE	1250.3	1252.9	0.21%	-5.92%
SERVICES	871.9	868.5	-0.39%	1.93%
INDUSTRY	5948.9	5903.7	-0.76%	-14.22%

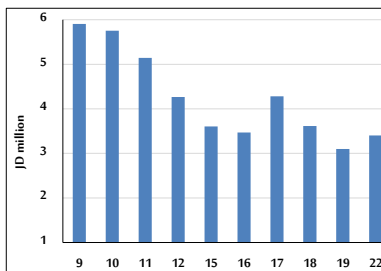
### STOCK PRICE MARKET INDEX WEIGHTED BY FREE FLOAT MARKET CAP. (2012=1000)

	THURSDAY 19/10/2023	SUNDAY 22/10/2023	% CHANGE	
			DAY BEFORE	YTD
FIRST MARKET	1354.8	1353.7	-0.08%	-3.90%
SECOND MARKET	841.6	839.1	-0.30%	6.42%

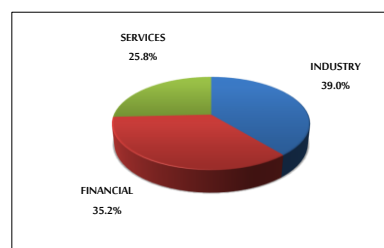
### MARKET CAPITALIZATION (JD)

	THURSDAY 19/10/2023	SUNDAY 22/10/2023	% CHANGE DAY BEFORE	% CHANGE YTD
	16,956,413,328	16,917,058,336	-0.23%	-6.04%

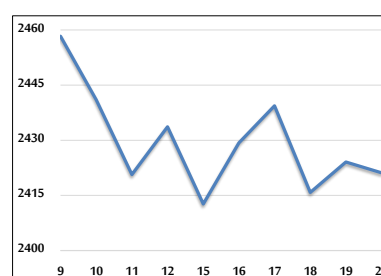
### VALUE TRADED FROM 9/10 TO 22/10/2023



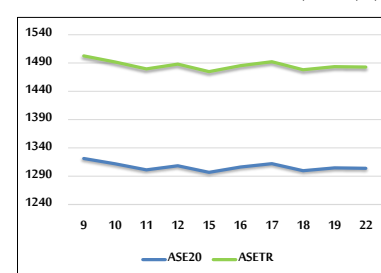
### VALUE TRADED BY SECTOR SUNDAY 22/10/2023



### GENERAL FREE FLOAT PRICE INDEX FROM 9/10 TO 22/10/2023



### ASE20 and ASETR FREE FLOAT PRICE INDEX FROM 9/10 TO 22/10/2023



### STOCK PRICE INDEX FROM 9/10 TO 22/10/2023

