

Daily Summary for Amman Stock Exchange

VALUE TRADED (JD)

	2022	2023	NET CHANGE	CHANGE (%)
Daily	3,776,536	4,280,800	504,264	13.35%
Cumulative (1/10-17/10)	67,374,777	64,190,949	-3,183,828	-4.73%
Cumulative (2/1-17/10)	1,635,464,863	1,238,741,624	-396,723,239	-24.26%

NO. OF SHARES TRADED

	2022	2023	NET CHANGE	CHANGE (%)
Daily	2,705,860	4,445,271	1,739,411	64.28%
Cumulative (1/10-17/10)	50,579,092	68,357,179	17,778,087	35.15%
Cumulative (2/1-17/10)	938,949,506	907,341,956	-31,607,550	-3.37%

NO. OF TRANSACTIONS

	2022	2023	NET CHANGE	CHANGE (%)
Daily	2,659	2,230	-429	-16.13%
Cumulative (1/10-17/10)	35,966	34,662	-1,304	-3.63%
Cumulative (2/1-17/10)	617,620	566,885	-50,735	-8.21%

SOME FINANCIAL RATIOS FOR THE ASE (17/10/2023)

SECTOR	P/E	P/BV	DIVIDEND YIELD (%)	TURNOVER (%)
FINANCIAL	8.833	0.805	5.722	0.074
SERVICES	12.030	1.330	6.609	0.078
INDUSTRY	5.464	1.602	7.232	0.047
OVERALL	7.064	1.030	6.636	0.071

STOCK PRICE INDEX WEIGHTED BY FREE FLOAT MARKET CAPITALIZATION (1999=1000)

	MONDAY 16/10/2023	TUESDAY 17/10/2023	% CHANGE	
			DAY BEFORE	YTD
GENERAL	2429.3	2439.4	0.41%	-2.49%
FINANCIAL	2684.4	2693.5	0.34%	0.05%
SERVICES	1678.8	1683.4	0.27%	-3.30%
INDUSTRY	4802.5	4838.7	0.75%	-8.57%

STOCK PRICE INDEX WEIGHTED BY FREE FLOAT MARKET CAPITALIZATION ASE20 (2014=1000)

	1306.2	1312.2	0.46%	-2.46%
--	--------	--------	-------	--------

Total Return Index ASETR (2021=1074)

	1485.4	1492.3	0.46%	4.34%
--	--------	--------	-------	-------

STOCK PRICE INDEX WEIGHTED BY MARKET CAPITALIZATION (1991=1000)

	MONDAY 16/10/2023	TUESDAY 17/10/2023	% CHANGE	
			DAY BEFORE	YTD
GENERAL	4433.3	4448.4	0.34%	-5.96%
BANKS	6549.0	6558.3	0.14%	-2.89%
INSURANCE	1252.6	1253.9	0.10%	-5.84%
SERVICES	879.0	880.8	0.21%	3.38%
INDUSTRY	5987.6	6025.8	0.64%	-12.44%

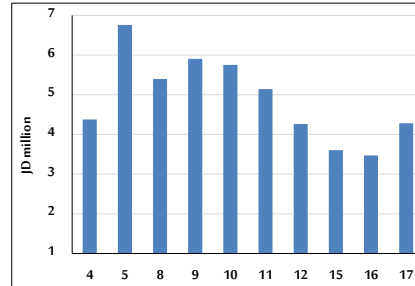
STOCK PRICE MARKET INDEX WEIGHTED BY FREE FLOAT MARKET CAP. (2012=1000)

	MONDAY 16/10/2023	TUESDAY 17/10/2023	% CHANGE	
			DAY BEFORE	YTD
FIRST MARKET	1356.0	1362.1	0.45%	-3.30%
SECOND MARKET	852.5	852.5	0.00%	8.11%

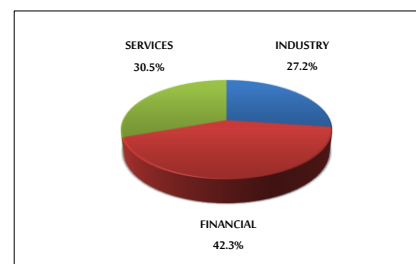
MARKET CAPITALIZATION (JD)

	16,996,526,851	17,050,002,070	0.31%	-5.30%
--	----------------	----------------	-------	--------

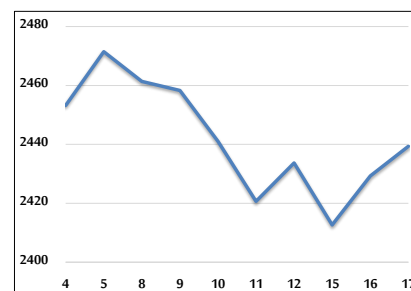
VALUE TRADED FROM 4/10 TO 17/10/2023



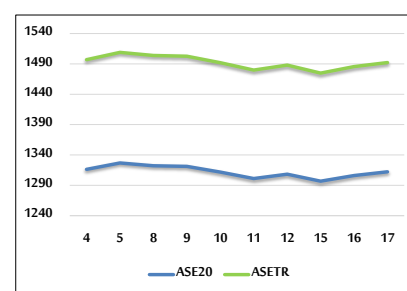
VALUE TRADED BY SECTOR TUESDAY 17/10/2023



GENERAL FREE FLOAT PRICE INDEX FROM 4/10 TO 17/10/2023



ASE20 and ASETR FREE FLOAT PRICE INDEX FROM 4/10 TO 17/10/2023



STOCK PRICE INDEX FROM 4/10 TO 17/10/2023

