

Daily Summary for Amman Stock Exchange

VALUE TRADED (JD)

	2022	2023	NET CHANGE	CHANGE (%)
Daily	6,646,729	5,688,475	-958,254	-14.42%
Cumulative (1/9-25/9)	95,691,309	70,600,750	-25,090,559	-26.22%
Cumulative (2/1-25/9)	1,541,996,260	1,162,379,418	-379,616,842	-24.62%

NO. OF SHARES TRADED

	2022	2023	NET CHANGE	CHANGE (%)
Daily	3,286,212	4,910,024	1,623,812	49.41%
Cumulative (1/9-25/9)	60,841,651	82,023,921	21,182,270	34.82%
Cumulative (2/1-25/9)	872,969,874	827,647,237	-45,322,637	-5.19%

NO. OF TRANSACTIONS

	2022	2023	NET CHANGE	CHANGE (%)
Daily	2,658	2,540	-118	-4.44%
Cumulative (1/9-25/9)	41,306	47,142	5,836	14.13%
Cumulative (2/1-25/9)	571,249	526,183	-45,066	-7.89%

SOME FINANCIAL RATIOS FOR THE ASE (25/9/2023)

SECTOR	P/E	P/BV	DIVIDEND YIELD (%)	TURNOVER (%)
FINANCIAL	8.667	0.787	5.863	0.060
SERVICES	12.129	1.336	6.573	0.079
INDUSTRY	5.481	1.607	7.209	0.168
OVERALL	7.010	1.029	6.753	0.079

STOCK PRICE INDEX WEIGHTED BY FREE FLOAT MARKET CAPITALIZATION (1999=1000)

	SUNDAY 24/09/2023	MONDAY 25/09/2023	% CHANGE	
			DAY BEFORE	YTD
GENERAL	2408.6	2410.3	0.07%	-3.65%
FINANCIAL	2615.9	2622.2	0.24%	-2.60%
SERVICES	1708.4	1702.1	-0.36%	-2.22%
INDUSTRY	4867.1	4867.6	0.01%	-8.02%

STOCK PRICE INDEX WEIGHTED BY FREE FLOAT MARKET CAPITALIZATION ASE20 (2014=1000)

	1289.1	1290.2	0.08%	-4.10%
--	--------	--------	-------	--------

Total Return Index ASETR (2021=1074)

	1466.1	1467.3	0.08%	2.59%
--	--------	--------	-------	-------

STOCK PRICE INDEX WEIGHTED BY MARKET CAPITALIZATION (1991=1000)

	SUNDAY 24/09/2023	MONDAY 25/09/2023	% CHANGE	
			DAY BEFORE	YTD
GENERAL	4407.0	4413.2	0.14%	-6.70%
BANKS	6378.6	6400.3	0.34%	-5.23%
INSURANCE	1243.8	1245.2	0.11%	-6.49%
SERVICES	891.8	891.5	-0.04%	4.63%
INDUSTRY	6070.9	6067.3	-0.06%	-11.84%

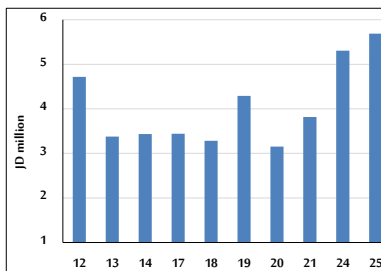
STOCK PRICE MARKET INDEX WEIGHTED BY FREE FLOAT MARKET CAP. (2012=1000)

	SUNDAY 24/09/2023	MONDAY 25/09/2023	% CHANGE	
			DAY BEFORE	YTD
FIRST MARKET	1340.5	1341.5	0.07%	-4.76%
SECOND MARKET	863.1	863.1	0.00%	9.46%

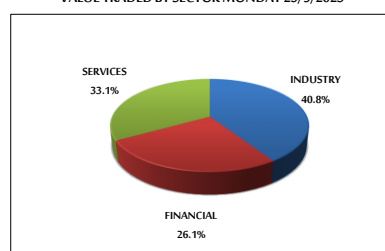
MARKET CAPITALIZATION (JD)

	16,850,605,921	16,873,423,655	0.14%	-6.28%
--	----------------	----------------	-------	--------

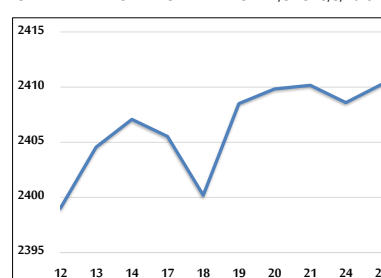
VALUE TRADED FROM 12/9 TO 25/9/2023



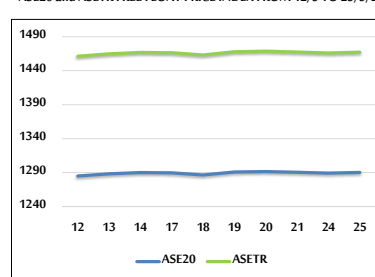
VALUE TRADED BY SECTOR MONDAY 25/9/2023



GENERAL FREE FLOAT PRICE INDEX FROM 12/9 TO 25/9/2023



ASE20 and ASETR FREE FLOAT PRICE INDEX FROM 12/9 TO 25/9/2023



STOCK PRICE INDEX FROM 12/9 TO 25/9/2023

