

Daily Summary for Amman Stock Exchange

VALUE TRADED (JD)

	2022	2023	NET CHANGE	CHANGE (%)
Daily	4,911,402	5,304,508	393,106	8.00%
Cumulative (1/9-24/9)	89,044,580	64,912,275	-24,132,305	-27.10%
Cumulative (2/1-24/9)	1,535,349,531	1,156,690,943	-378,658,588	-24.66%

NO. OF SHARES TRADED

	2022	2023	NET CHANGE	CHANGE (%)
Daily	2,750,870	5,134,256	2,383,386	86.64%
Cumulative (1/9-24/9)	57,555,439	77,113,897	19,558,458	33.98%
Cumulative (2/1-24/9)	869,683,662	822,737,213	-46,946,449	-5.40%

NO. OF TRANSACTIONS

	2022	2023	NET CHANGE	CHANGE (%)
Daily	2,631	2,797	166	6.31%
Cumulative (1/9-24/9)	38,648	44,602	5,954	15.41%
Cumulative (2/1-24/9)	568,591	523,643	-44,948	-7.91%

SOME FINANCIAL RATIOS FOR THE ASE (24/9/2023)

SECTOR	P/E	P/BV	DIVIDEND YIELD (%)	TURNOVER (%)
FINANCIAL	8.640	0.785	5.882	0.073
SERVICES	12.159	1.340	6.557	0.091
INDUSTRY	5.478	1.606	7.213	0.113
OVERALL	7.000	1.027	6.763	0.082

STOCK PRICE INDEX WEIGHTED BY FREE FLOAT MARKET CAPITALIZATION (1999=1000)

	THURSDAY 21/09/2023	SUNDAY 24/09/2023	% CHANGE	
			DAY BEFORE	YTD
GENERAL	2410.2	2408.6	-0.07%	-3.72%
FINANCIAL	2613.1	2615.9	0.11%	-2.83%
SERVICES	1707.4	1708.4	0.06%	-1.86%
INDUSTRY	4892.5	4867.1	-0.52%	-8.03%

STOCK PRICE INDEX WEIGHTED BY FREE FLOAT MARKET CAPITALIZATION ASE20 (2014=1000)

	1290.4	1289.1	-0.10%	-4.18%
--	--------	--------	--------	--------

Total Return Index ASETR (2021=1074)

	1467.5	1466.1	-0.10%	2.51%
--	--------	--------	--------	-------

STOCK PRICE INDEX WEIGHTED BY MARKET CAPITALIZATION (1991=1000)

	THURSDAY 21/09/2023	SUNDAY 24/09/2023	% CHANGE	
			DAY BEFORE	YTD
GENERAL	4416.2	4407.0	-0.21%	-6.84%
BANKS	6376.0	6378.6	0.04%	-5.55%
INSURANCE	1239.4	1243.8	0.36%	-6.60%
SERVICES	889.8	891.8	0.23%	4.66%
INDUSTRY	6112.5	6070.9	-0.68%	-11.79%

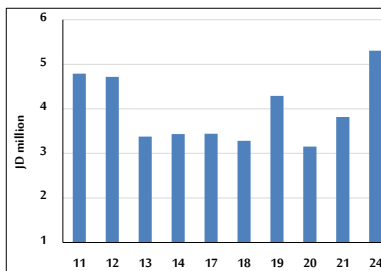
STOCK PRICE MARKET INDEX WEIGHTED BY FREE FLOAT MARKET CAP. (2012=1000)

	THURSDAY 21/09/2023	SUNDAY 24/09/2023	% CHANGE	
			DAY BEFORE	YTD
FIRST MARKET	1341.9	1340.5	-0.11%	-4.83%
SECOND MARKET	858.4	863.1	0.55%	9.46%

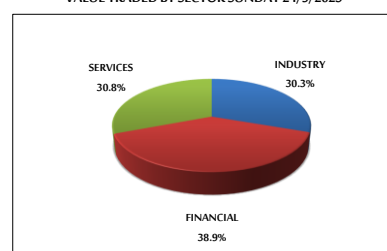
MARKET CAPITALIZATION (JD)

	16,875,529,700	16,850,605,921	-0.15%	-6.41%
--	----------------	----------------	--------	--------

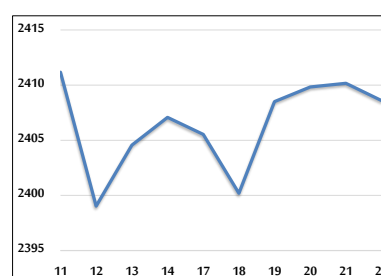
VALUE TRADED FROM 11/9 TO 24/9/2023



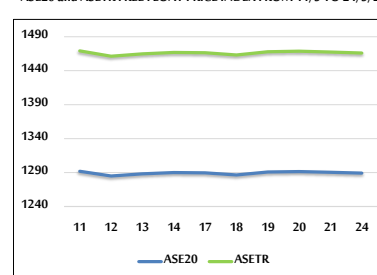
VALUE TRADED BY SECTOR SUNDAY 24/9/2023



GENERAL FREE FLOAT PRICE INDEX FROM 11/9 TO 24/9/2023



ASE20 and ASETR FREE FLOAT PRICE INDEX FROM 11/9 TO 24/9/2023



STOCK PRICE INDEX FROM 11/9 TO 24/9/2023

