

## Daily Summary for Amman Stock Exchange

### VALUE TRADED (JD)

	2022	2023	NET CHANGE	CHANGE (%)
Daily	6,239,748	3,816,364	-2,423,384	-38.84%
Cumulative (1/9-21/9)	84,133,178	59,607,767	-24,525,411	-29.15%
Cumulative (2/1-21/9)	1,530,438,129	1,151,386,435	-379,051,694	-24.77%

### NO. OF SHARES TRADED

	2022	2023	NET CHANGE	CHANGE (%)
Daily	2,918,569	3,194,967	276,398	9.47%
Cumulative (1/9-21/9)	54,804,569	71,979,641	17,175,072	31.34%
Cumulative (2/1-21/9)	866,932,792	817,602,957	-49,329,835	-5.69%

### NO. OF TRANSACTIONS

	2022	2023	NET CHANGE	CHANGE (%)
Daily	2,665	2,463	-202	-7.58%
Cumulative (1/9-21/9)	36,017	41,805	5,788	16.07%
Cumulative (2/1-21/9)	565,960	520,846	-45,114	-7.97%

### SOME FINANCIAL RATIOS FOR THE ASE (21/9/2023)

SECTOR	P/E	P/BV	DIVIDEND YIELD (%)	TURNOVER (%)
FINANCIAL	8.635	0.784	5.885	0.044
SERVICES	12.133	1.337	6.570	0.094
INDUSTRY	5.511	1.616	7.170	0.025
OVERALL	7.014	1.030	6.749	0.051

### STOCK PRICE INDEX WEIGHTED BY FREE FLOAT MARKET CAPITALIZATION (1999=1000)

	WEDNESDAY 20/09/2023	THURSDAY 21/09/2023	% CHANGE	
			DAY BEFORE	YTD
GENERAL	2409.8	2410.2	0.01%	-3.65%
FINANCIAL	2609.5	2613.1	0.14%	-2.94%
SERVICES	1708.6	1707.4	-0.07%	-1.92%
INDUSTRY	4901.8	4892.5	-0.19%	-7.55%

### STOCK PRICE INDEX WEIGHTED BY FREE FLOAT MARKET CAPITALIZATION ASE20 (2014=1000)

	2022	2023	NET CHANGE	CHANGE (%)
	1291.4	1290.4	-0.08%	-4.08%

### Total Return Index ASETR (2021=1074)

	2022	2023	NET CHANGE	CHANGE (%)
	1468.7	1467.5	-0.08%	2.61%

### STOCK PRICE INDEX WEIGHTED BY MARKET CAPITALIZATION (1991=1000)

	WEDNESDAY 20/09/2023	THURSDAY 21/09/2023	% CHANGE	
			DAY BEFORE	YTD
GENERAL	4424.4	4416.2	-0.19%	-6.64%
BANKS	6391.4	6376.0	-0.24%	-5.59%
INSURANCE	1237.9	1239.4	0.12%	-6.93%
SERVICES	888.2	889.8	0.17%	4.42%
INDUSTRY	6127.3	6112.5	-0.24%	-11.18%

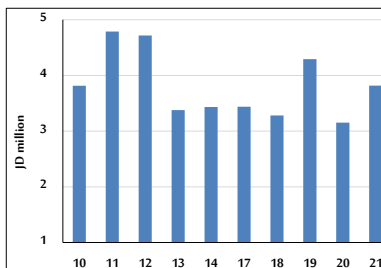
### STOCK PRICE MARKET INDEX WEIGHTED BY FREE FLOAT MARKET CAP. (2012=1000)

	WEDNESDAY 20/09/2023	THURSDAY 21/09/2023	% CHANGE	
			DAY BEFORE	YTD
FIRST MARKET	1342.9	1341.9	-0.07%	-4.73%
SECOND MARKET	851.4	858.4	0.82%	8.86%

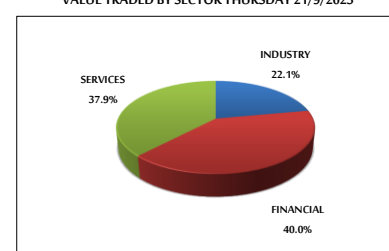
### MARKET CAPITALIZATION (JD)

	2022	2023	NET CHANGE	CHANGE (%)
	16,898,454,306	16,875,529,700	-0.14%	-6.27%

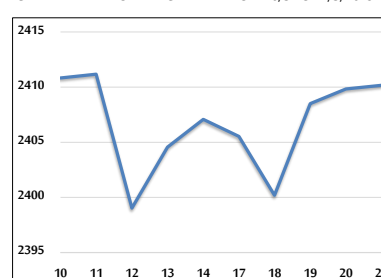
### VALUE TRADED FROM 10/9 TO 21/9/2023



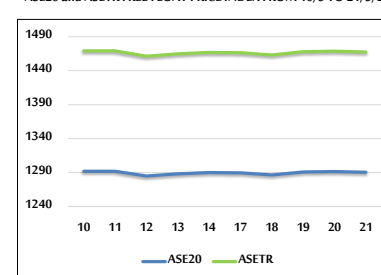
### VALUE TRADED BY SECTOR THURSDAY 21/9/2023



### GENERAL FREE FLOAT PRICE INDEX FROM 10/9 TO 21/9/2023



### ASE20 and ASETR FREE FLOAT PRICE INDEX FROM 10/9 TO 21/9/2023



### STOCK PRICE INDEX FROM 10/9 TO 21/9/2023

