

Daily Summary for Amman Stock Exchange

VALUE TRADED (JD)

| | 2022 | 2023 | NET CHANGE | CHANGE (%) |
|-----------------------|---------------|---------------|--------------|------------|
| Daily | 3,773,002 | 3,151,523 | -621,479 | -16.47% |
| Cumulative (1/9-20/9) | 77,893,430 | 55,791,403 | -22,102,027 | -28.37% |
| Cumulative (2/1-20/9) | 1,524,198,381 | 1,147,570,071 | -376,628,310 | -24.71% |

NO. OF SHARES TRADED

| | 2022 | 2023 | NET CHANGE | CHANGE (%) |
|-----------------------|-------------|-------------|-------------|------------|
| Daily | 2,966,515 | 3,226,321 | 259,806 | 8.76% |
| Cumulative (1/9-20/9) | 51,886,000 | 68,784,674 | 16,898,674 | 32.57% |
| Cumulative (2/1-20/9) | 864,014,223 | 814,407,990 | -49,606,233 | -5.74% |

NO. OF TRANSACTIONS

| | 2022 | 2023 | NET CHANGE | CHANGE (%) |
|-----------------------|---------|---------|------------|------------|
| Daily | 2,453 | 2,442 | -11 | -0.45% |
| Cumulative (1/9-20/9) | 33,352 | 39,342 | 5,990 | 17.96% |
| Cumulative (2/1-20/9) | 563,295 | 518,383 | -44,912 | -7.97% |

SOME FINANCIAL RATIOS FOR THE ASE (20/9/2023)

| SECTOR | P/E | P/BV | DIVIDEND YIELD (%) | TURNOVER (%) |
|-----------|--------|-------|--------------------|--------------|
| FINANCIAL | 8.647 | 0.785 | 5.877 | 0.039 |
| SERVICES | 12.139 | 1.337 | 6.568 | 0.067 |
| INDUSTRY | 5.522 | 1.619 | 7.155 | 0.090 |
| OVERALL | 7.027 | 1.032 | 6.736 | 0.052 |

STOCK PRICE INDEX WEIGHTED BY FREE FLOAT MARKET CAPITALIZATION (1999=1000)

| | TUESDAY 19/09/2023 | WEDNESDAY 20/09/2023 | % CHANGE | |
|-----------|-----------------------|-------------------------|------------|--------|
| | | | DAY BEFORE | YTD |
| GENERAL | 2408.5 | 2409.8 | 0.06% | -3.67% |
| FINANCIAL | 2609.7 | 2609.5 | -0.01% | -3.07% |
| SERVICES | 1708.6 | 1708.6 | 0.00% | -1.85% |
| INDUSTRY | 4871.9 | 4901.8 | 0.61% | -7.38% |

STOCK PRICE INDEX WEIGHTED BY FREE FLOAT MARKET CAPITALIZATION ASE20 (2014=1000)

| | 2022 | 2023 | NET CHANGE | CHANGE (%) |
|--|--------|--------|------------|------------|
| | 1290.8 | 1291.4 | 0.05% | -4.00% |

Total Return Index ASETR (2021=1074)

| | 2022 | 2023 | NET CHANGE | CHANGE (%) |
|--|--------|--------|------------|------------|
| | 1467.9 | 1468.7 | 0.05% | 2.70% |

STOCK PRICE INDEX WEIGHTED BY MARKET CAPITALIZATION (1991=1000)

| | TUESDAY 19/09/2023 | WEDNESDAY 20/09/2023 | % CHANGE | |
|-----------|-----------------------|-------------------------|------------|---------|
| | | | DAY BEFORE | YTD |
| GENERAL | 4418.6 | 4424.4 | 0.13% | -6.47% |
| BANKS | 6390.5 | 6391.4 | 0.01% | -5.36% |
| INSURANCE | 1233.4 | 1237.9 | 0.37% | -7.04% |
| SERVICES | 889.0 | 888.2 | -0.09% | 4.24% |
| INDUSTRY | 6105.8 | 6127.3 | 0.35% | -10.97% |

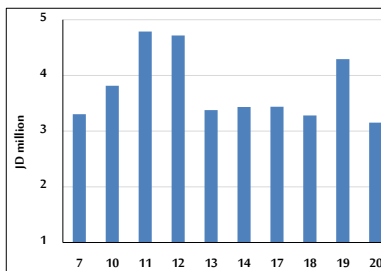
STOCK PRICE MARKET INDEX WEIGHTED BY FREE FLOAT MARKET CAP. (2012=1000)

| | TUESDAY 19/09/2023 | WEDNESDAY 20/09/2023 | % CHANGE | |
|---------------|-----------------------|-------------------------|------------|--------|
| | | | DAY BEFORE | YTD |
| FIRST MARKET | 1342.3 | 1342.9 | 0.05% | -4.66% |
| SECOND MARKET | 851.3 | 851.4 | 0.02% | 7.97% |

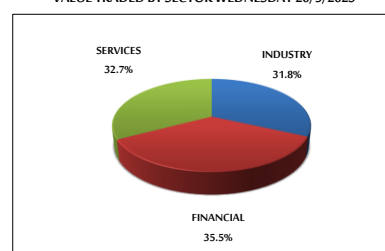
MARKET CAPITALIZATION (JD)

| | 2022 | 2023 | NET CHANGE | CHANGE (%) |
|--|----------------|----------------|------------|------------|
| | 16,867,295,601 | 16,898,454,306 | 0.18% | -6.14% |

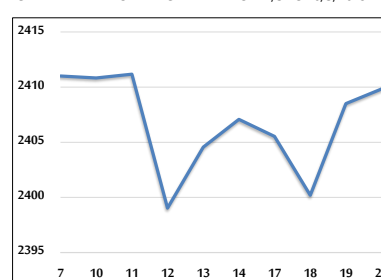
VALUE TRADED FROM 7/9 TO 20/9/2023



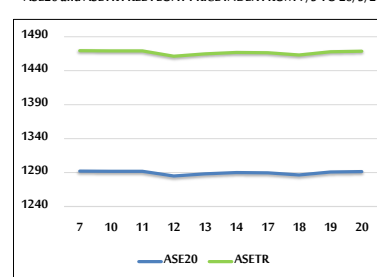
VALUE TRADED BY SECTOR WEDNESDAY 20/9/2023



GENERAL FREE FLOAT PRICE INDEX FROM 7/9 TO 20/9/2023



ASE20 and ASETR FREE FLOAT PRICE INDEX FROM 7/9 TO 20/9/2023



STOCK PRICE INDEX FROM 7/9 TO 20/9/2023

