

## Daily Summary for Amman Stock Exchange

### VALUE TRADED (JD)

	2022	2023	NET CHANGE	CHANGE (%)
Daily	9,382,192	2,914,645	-6,467,547	-68.93%
Cumulative (1/8-8/8)	72,481,779	26,252,822	-46,228,957	-63.78%
Cumulative (2/1-8/8)	1,224,219,706	1,012,133,409	-212,086,297	-17.32%

### NO. OF SHARES TRADED

	2022	2023	NET CHANGE	CHANGE (%)
Daily	5,831,633	2,063,845	-3,767,788	-64.61%
Cumulative (1/8-8/8)	36,607,097	19,115,929	-17,491,168	-47.78%
Cumulative (2/1-8/8)	714,522,603	689,316,848	-25,205,755	-3.53%

### NO. OF TRANSACTIONS

	2022	2023	NET CHANGE	CHANGE (%)
Daily	3,874	1,784	-2,090	-53.95%
Cumulative (1/8-8/8)	27,923	12,789	-15,134	-54.20%
Cumulative (2/1-8/8)	481,515	443,286	-38,229	-7.94%

### SOME FINANCIAL RATIOS FOR THE ASE (8/8/2023)

SECTOR	P/E	P/BV	DIVIDEND YIELD (%)	TURNOVER (%)
FINANCIAL	8.770	0.794	5.785	0.033
SERVICES	12.170	1.341	6.551	0.035
INDUSTRY	5.745	1.685	6.877	0.027
OVERALL	7.208	1.055	6.563	0.033

### STOCK PRICE INDEX WEIGHTED BY FREE FLOAT MARKET CAPITALIZATION (1999=1000)

	MONDAY 07/08/2023	TUESDAY 08/08/2023	% CHANGE	
			DAY BEFORE	YTD
GENERAL	2444.4	2443.9	-0.02%	-2.31%
FINANCIAL	2620.7	2628.0	0.28%	-2.39%
SERVICES	1732.1	1725.2	-0.39%	-0.89%
INDUSTRY	5077.7	5048.2	-0.58%	-4.61%

### STOCK PRICE INDEX WEIGHTED BY FREE FLOAT MARKET CAPITALIZATION ASE20 (2014=1000)

	1310.1	1310.6	0.04%	-2.58%
--	--------	--------	-------	--------

### Total Return Index ASETR (2021=1074)

	1490.0	1490.5	0.04%	4.22%
--	--------	--------	-------	-------

### STOCK PRICE INDEX WEIGHTED BY MARKET CAPITALIZATION (1991=1000)

	MONDAY 07/08/2023	TUESDAY 08/08/2023	% CHANGE	
			DAY BEFORE	YTD
GENERAL	4519.8	4515.9	-0.09%	-4.53%
BANKS	6406.9	6425.1	0.28%	-4.86%
INSURANCE	1268.9	1265.2	-0.29%	-4.99%
SERVICES	893.1	888.2	-0.54%	4.24%
INDUSTRY	6440.3	6416.7	-0.37%	-6.76%

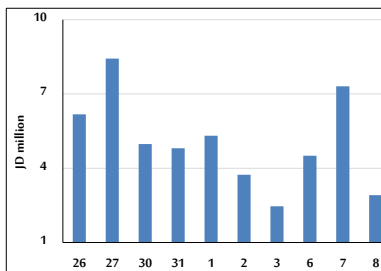
### STOCK PRICE MARKET INDEX WEIGHTED BY FREE FLOAT MARKET CAP. (2012=1000)

	MONDAY 07/08/2023	TUESDAY 08/08/2023	% CHANGE	
			DAY BEFORE	YTD
FIRST MARKET	1363.3	1363.5	0.02%	-3.20%
SECOND MARKET	841.9	841.5	-0.04%	6.73%

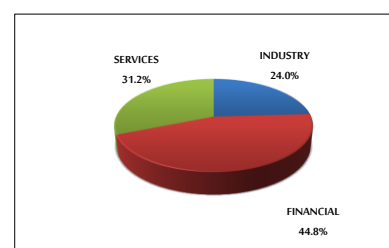
### MARKET CAPITALIZATION (JD)

	17,194,529,728	17,180,701,030	-0.08%	-4.57%
--	----------------	----------------	--------	--------

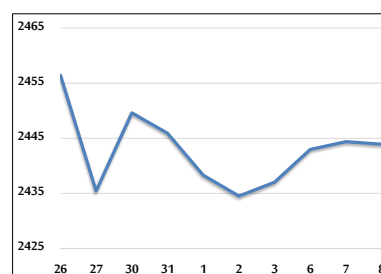
### VALUE TRADED FROM 26/7 TO 8/8/2023



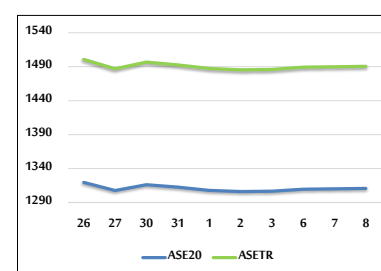
### VALUE TRADED BY SECTOR TUESDAY 8/8/2023



### GENERAL FREE FLOAT PRICE INDEX FROM 26/7 TO 8/8/2023



### ASE20 and ASETR FREE FLOAT PRICE INDEX FROM 26/7 TO 8/8/2023



### STOCK PRICE INDEX FROM 26/7 TO 8/8/2023

