

## Daily Summary for Amman Stock Exchange

### VALUE TRADED (JD)

	2022	2023	NET CHANGE	CHANGE (%)
Daily	5,435,899	9,063,161	3,627,262	66.73%
Cumulative (1/3-15/3)	74,143,130	79,942,249	5,799,119	7.82%
Cumulative (2/1-15/3)	300,563,808	454,016,885	153,453,077	51.06%

### NO. OF SHARES TRADED

	2022	2023	NET CHANGE	CHANGE (%)
Daily	3,248,213	3,430,986	182,773	5.63%
Cumulative (1/3-15/3)	48,500,457	60,617,413	12,116,956	24.98%
Cumulative (2/1-15/3)	224,337,352	285,561,627	61,224,275	27.29%

### NO. OF TRANSACTIONS

	2022	2023	NET CHANGE	CHANGE (%)
Daily	2,908	2,594	-314	-10.80%
Cumulative (1/3-15/3)	30,648	32,699	2,051	6.69%
Cumulative (2/1-15/3)	142,223	186,114	43,891	30.86%

### SOME FINANCIAL RATIOS FOR THE ASE (15/3/2023)

SECTOR	P/E	P/BV	DIVIDEND YIELD (%)	TURNOVER (%)
FINANCIAL	10.832	0.845	5.392	0.049
SERVICES	9.990	1.462	4.842	0.082
INDUSTRY	5.643	2.489	2.445	0.052
OVERALL	7.559	1.245	4.231	0.056

### STOCK PRICE INDEX WEIGHTED BY FREE FLOAT MARKET CAPITALIZATION (1999=1000)

	TUESDAY 14/03/2023	WEDNESDAY 15/03/2023	% CHANGE	
			DAY BEFORE	YTD
GENERAL	2666.4	2648.1	-0.69%	5.86%
FINANCIAL	2774.7	2776.3	0.06%	3.12%
SERVICES	1833.4	1825.2	-0.45%	4.85%
INDUSTRY	6192.2	6012.2	-2.91%	13.60%

### STOCK PRICE INDEX WEIGHTED BY FREE FLOAT MARKET CAPITALIZATION ASE20 (2014=1000)

	1453.4	1443.1	-0.71%	7.26%
--	--------	--------	--------	-------

### Total Return Index ASETR (2021=1074)

	1545.1	1534.1	-0.71%	7.26%
--	--------	--------	--------	-------

### STOCK PRICE INDEX WEIGHTED BY MARKET CAPITALIZATION (1991=1000)

	TUESDAY 14/03/2023	WEDNESDAY 15/03/2023	% CHANGE	
			DAY BEFORE	YTD
GENERAL	5205.3	5133.2	-1.39%	8.52%
BANKS	6858.1	6856.8	-0.02%	1.53%
INSURANCE	1311.8	1309.8	-0.15%	-1.64%
SERVICES	924.1	923.4	-0.08%	8.37%
INDUSTRY	8317.8	8057.3	-3.13%	17.08%

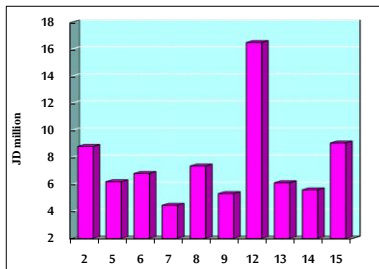
### STOCK PRICE MARKET INDEX WEIGHTED BY FREE FLOAT MARKET CAP. (2012=1000)

	TUESDAY 14/03/2023	WEDNESDAY 15/03/2023	% CHANGE	
			DAY BEFORE	YTD
FIRST MARKET	1506.5	1495.6	-0.72%	6.18%
SECOND MARKET	792.3	793.0	0.08%	0.56%

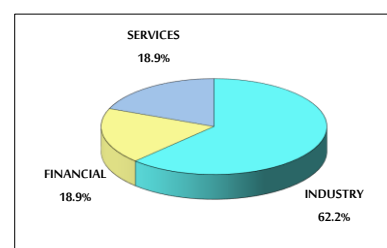
### MARKET CAPITALIZATION (JD)

	19,673,165,678	19,413,891,840	-1.32%	7.83%
--	----------------	----------------	--------	-------

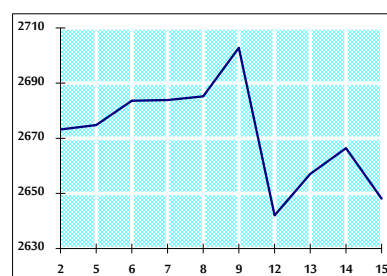
### VALUE TRADED FROM 2/3 TO 15/3/2023



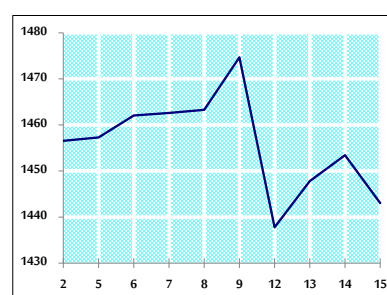
### VALUE TRADED BY SECTOR WEDNESDAY 15/3/2023



### GENERAL FREE FLOAT PRICE INDEX FROM 2/3 TO 15/3/2023



### ASE20 FREE FLOAT PRICE INDEX FROM 2/3 TO 15/3/2023



### GENERAL PRICE INDEX FROM 2/3 TO 15/3/2023

