

Daily Summary for Amman Stock Exchange

VALUE TRADED (JD)

	2022	2023	NET CHANGE	CHANGE (%)
Daily	5,101,699	16,493,451	11,391,752	223.29%
Cumulative (1/3-12/3)	47,940,067	59,148,687	11,208,620	23.38%
Cumulative (2/1-12/3)	274,360,745	433,223,323	158,862,578	57.90%

NO. OF SHARES TRADED

	2022	2023	NET CHANGE	CHANGE (%)
Daily	4,174,020	13,288,836	9,114,816	218.37%
Cumulative (1/3-12/3)	34,777,887	48,421,222	13,643,335	39.23%
Cumulative (2/1-12/3)	210,614,782	273,365,436	62,750,654	29.79%

NO. OF TRANSACTIONS

	2022	2023	NET CHANGE	CHANGE (%)
Daily	2,570	4,049	1,479	57.55%
Cumulative (1/3-12/3)	20,639	24,840	4,201	20.35%
Cumulative (2/1-12/3)	132,214	178,255	46,041	34.82%

SOME FINANCIAL RATIOS FOR THE ASE (12/3/2023)

SECTOR	P/E	P/BV	DIVIDEND YIELD (%)	TURNOVER (%)
FINANCIAL	10.840	0.846	5.388	0.204
SERVICES	9.930	1.453	4.871	0.171
INDUSTRY	5.683	2.506	2.428	0.391
OVERALL	7.577	1.248	4.221	0.218

STOCK PRICE INDEX WEIGHTED BY FREE FLOAT MARKET CAPITALIZATION (1999=1000)

	THURSDAY 09/03/2023	SUNDAY 12/03/2023	% CHANGE	
			DAY BEFORE	YTD
GENERAL	2702.8	2642.0	-2.25%	5.61%
FINANCIAL	2808.6	2773.4	-1.25%	3.02%
SERVICES	1848.0	1808.5	-2.14%	3.89%
INDUSTRY	6330.1	6031.7	-4.71%	13.97%

STOCK PRICE INDEX WEIGHTED BY FREE FLOAT MARKET CAPITALIZATION ASE20 (2014=1000)

	1474.7	1437.8	-2.50%	6.87%
--	--------	--------	--------	-------

Total Return Index ASETR (2021=1074)

	1567.7	1528.4	-2.50%	6.87%
--	--------	--------	--------	-------

STOCK PRICE INDEX WEIGHTED BY MARKET CAPITALIZATION (1991=1000)

	THURSDAY 09/03/2023	SUNDAY 12/03/2023	% CHANGE	
			DAY BEFORE	YTD
GENERAL	5282.6	5145.7	-2.59%	8.78%
BANKS	6919.0	6860.5	-0.84%	1.58%
INSURANCE	1310.5	1318.3	0.60%	-1.00%
SERVICES	927.8	922.3	-0.60%	8.24%
INDUSTRY	8519.1	8099.6	-4.92%	17.69%

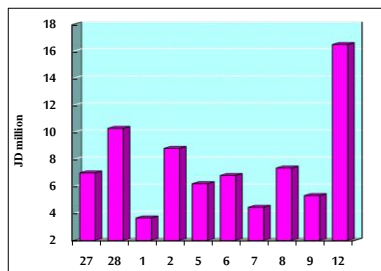
STOCK PRICE MARKET INDEX WEIGHTED BY FREE FLOAT MARKET CAP. (2012=1000)

	THURSDAY 09/03/2023	SUNDAY 12/03/2023	% CHANGE	
			DAY BEFORE	YTD
FIRST MARKET	1527.9	1492.5	-2.32%	5.96%
SECOND MARKET	796.6	791.6	-0.62%	0.39%

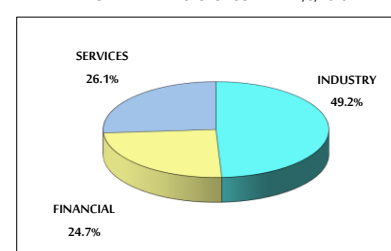
MARKET CAPITALIZATION (JD)

	19,951,314,495	19,458,497,615	-2.47%	8.08%
--	----------------	----------------	--------	-------

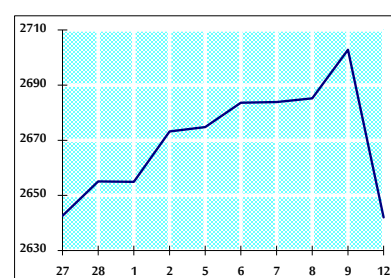
VALUE TRADED FROM 27/2 TO 12/3/2023



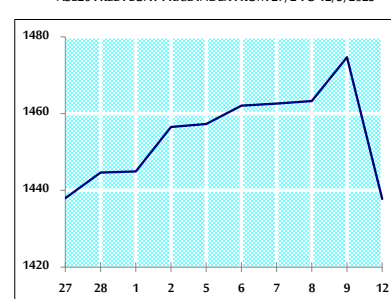
VALUE TRADED BY SECTOR SUNDAY 12/3/2023



GENERAL FREE FLOAT PRICE INDEX FROM 27/2 TO 12/3/2023



ASE20 FREE FLOAT PRICE INDEX FROM 27/2 TO 12/3/2023



GENERAL PRICE INDEX FROM 27/2 TO 12/3/2023

