

Daily Summary for Amman Stock Exchange

VALUE TRADED (JD)

	2021	2022	NET CHANGE	CHANGE (%)
Daily	8,133,628	2,741,428	-5,392,200	-66.30%
Cumulative (1/11-22/11)	97,520,055	83,560,649	-13,959,406	-14.31%
Cumulative (2/1-22/11)	1,768,630,015	1,776,863,230	8,233,215	0.47%

NO. OF SHARES TRADED

	2021	2022	NET CHANGE	CHANGE (%)
Daily	7,026,715	3,045,396	-3,981,319	-56.66%
Cumulative (1/11-22/11)	82,169,728	69,572,194	-12,597,534	-15.33%
Cumulative (2/1-22/11)	1,388,845,915	1,044,982,658	-343,863,257	-24.76%

NO. OF TRANSACTIONS

	2021	2022	NET CHANGE	CHANGE (%)
Daily	4,655	2,388	-2,267	-48.70%
Cumulative (1/11-22/11)	56,628	35,270	-21,358	-37.72%
Cumulative (2/1-22/11)	733,965	674,799	-59,166	-8.06%

SOME FINANCIAL RATIOS FOR THE ASE (22/11/2022)

SECTOR	P/E	P/BV	DIVIDEND YIELD (%)	TURNOVER (%)
FINANCIAL	14.304	0.857	4.813	0.045
SERVICES	18.166	1.394	4.162	0.054
INDUSTRY	11.282	2.577	4.445	0.075
OVERALL	13.033	1.234	4.653	0.050

STOCK PRICE INDEX WEIGHTED BY FREE FLOAT MARKET CAPITALIZATION (1999=1000)

	MONDAY 21/11/2022	TUESDAY 22/11/2022	% CHANGE	
			DAY BEFORE	YTD
GENERAL	2449.5	2443.5	-0.25%	15.33%
FINANCIAL	2649.2	2641.3	-0.30%	1.42%
SERVICES	1671.7	1675.0	0.20%	26.19%
INDUSTRY	5257.1	5227.9	-0.56%	42.61%

STOCK PRICE INDEX WEIGHTED BY FREE FLOAT MARKET CAPITALIZATION ASE20 (2014=1000)

	1321.2	1316.7	-0.34%	22.56%
--	--------	--------	--------	--------

Total Return Index ASETR (2021=1074)

	1404.5	1399.7	-0.34%	30.28%
--	--------	--------	--------	--------

STOCK PRICE INDEX WEIGHTED BY MARKET CAPITALIZATION (1991=1000)

	MONDAY 21/11/2022	TUESDAY 22/11/2022	% CHANGE	
			DAY BEFORE	YTD
GENERAL	4667.3	4652.7	-0.31%	16.17%
BANKS	6629.5	6611.7	-0.27%	0.69%
INSURANCE	1366.4	1365.8	-0.04%	2.82%
SERVICES	816.1	813.9	-0.27%	4.02%
INDUSTRY	6882.0	6855.8	-0.38%	45.85%

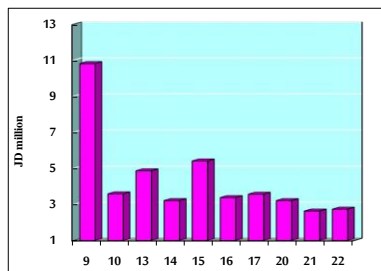
STOCK PRICE MARKET INDEX WEIGHTED BY FREE FLOAT MARKET CAP. (2012=1000)

	MONDAY 21/11/2022	TUESDAY 22/11/2022	% CHANGE	
			DAY BEFORE	YTD
FIRST MARKET	1378.7	1375.5	-0.24%	20.14%
SECOND MARKET	777.7	777.3	-0.05%	-17.01%

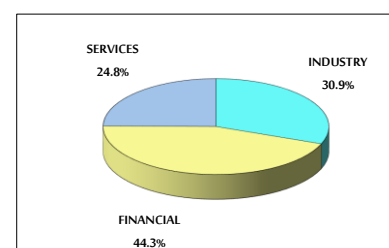
MARKET CAPITALIZATION (JD)

	17,778,315,101	17,725,484,641	-0.30%	14.39%
--	----------------	----------------	--------	--------

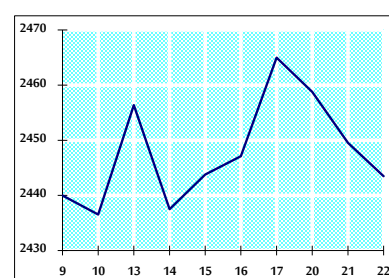
VALUE TRADED FROM 9/11 TO 22/11/2022



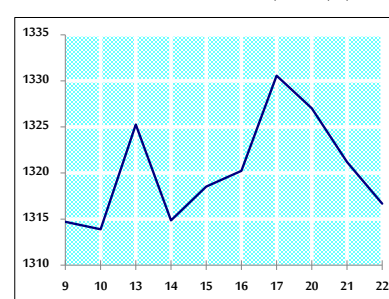
VALUE TRADED BY SECTOR TUESDAY 22/11/2022



GENERAL FREE FLOAT PRICE INDEX FROM 9/11 TO 22/11/2022



ASE20 FREE FLOAT PRICE INDEX FROM 9/11 TO 22/11/2022



GENERAL PRICE INDEX FROM 9/11 TO 22/11/2022

