

Daily Summary for Amman Stock Exchange

VALUE TRADED (JD)

	2021	2022	NET CHANGE	CHANGE (%)
Daily	12,278,598	5,100,963	-7,177,635	-58.46%
Cumulative (1/6-22/6)	198,315,840	130,447,174	-67,868,666	-34.22%
Cumulative (2/1-22/6)	1,066,473,174	872,618,354	-193,854,820	-18.18%

NO. OF SHARES TRADED

	2021	2022	NET CHANGE	CHANGE (%)
Daily	7,991,824	4,327,927	-3,663,897	-45.85%
Cumulative (1/6-22/6)	115,843,060	83,057,306	-32,785,754	-28.30%
Cumulative (2/1-22/6)	866,129,589	522,267,728	-343,861,861	-39.70%

NO. OF TRANSACTIONS

	2021	2022	NET CHANGE	CHANGE (%)
Daily	4,556	3,161	-1,395	-30.62%
Cumulative (1/6-22/6)	76,316	52,816	-23,500	-30.79%
Cumulative (2/1-22/6)	400,932	353,745	-47,187	-11.77%

SOME FINANCIAL RATIOS FOR THE ASE (22/6/2022)

SECTOR	P/E	P/BV	DIVIDEND YIELD (%)	TURNOVER (%)
FINANCIAL	13.595	0.823	5.049	0.076
SERVICES	17.400	1.323	4.375	0.063
INDUSTRY	12.454	2.845	4.027	0.047
OVERALL	13.255	1.248	4.631	0.070

STOCK PRICE INDEX WEIGHTED BY FREE FLOAT MARKET CAPITALIZATION (1999=1000)

	TUESDAY 21/06/2022	WEDNESDAY 22/06/2022	% CHANGE	
			DAY BEFORE	YTD
GENERAL	2398.4	2412.1	0.57%	13.85%
FINANCIAL	2580.7	2602.1	0.83%	-0.09%
SERVICES	1574.6	1582.8	0.52%	19.24%
INDUSTRY	5575.7	5583.3	0.14%	52.30%

STOCK PRICE INDEX WEIGHTED BY FREE FLOAT MARKET CAPITALIZATION ASE20 (2014=1000)

	1273.9	1281.7	0.61%	19.30%
--	--------	--------	-------	--------

Total Return Index ASETR (2021=1074)

	1354.2	1362.5	0.61%	26.82%
--	--------	--------	-------	--------

STOCK PRICE INDEX WEIGHTED BY MARKET CAPITALIZATION (1991=1000)

	TUESDAY 21/06/2022	WEDNESDAY 22/06/2022	% CHANGE	
			DAY BEFORE	YTD
GENERAL	4752.1	4748.8	-0.07%	18.56%
BANKS	6407.3	6421.9	0.23%	-2.20%
INSURANCE	1304.5	1302.2	-0.18%	-1.97%
SERVICES	775.5	774.4	-0.13%	-1.02%
INDUSTRY	7552.2	7526.7	-0.34%	60.13%

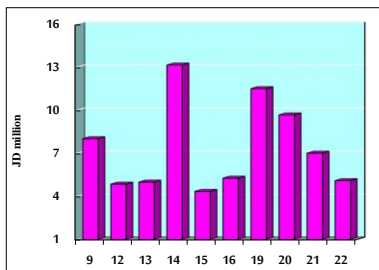
STOCK PRICE MARKET INDEX WEIGHTED BY FREE FLOAT MARKET CAP. (2012=1000)

	TUESDAY 21/06/2022	WEDNESDAY 22/06/2022	% CHANGE	
			DAY BEFORE	YTD
FIRST MARKET	1336.0	1344.0	0.60%	17.39%
SECOND MARKET	822.8	825.1	0.28%	-11.90%

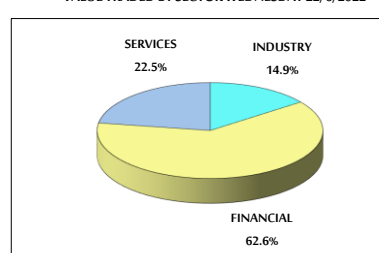
MARKET CAPITALIZATION (JD)

	18,095,732,488	18,087,846,189	-0.04%	16.73%
--	----------------	----------------	--------	--------

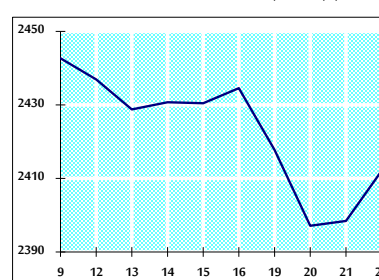
VALUE TRADED FROM 9/6 TO 22/6/2022



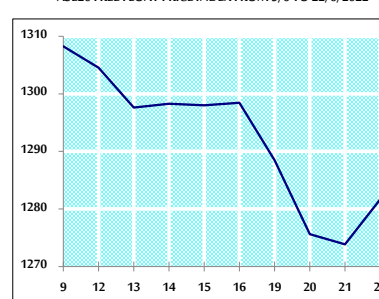
VALUE TRADED BY SECTOR WEDNESDAY 22/6/2022



GENERAL FREE FLOAT PRICE INDEX FROM 9/6 TO 22/6/2022



ASE20 FREE FLOAT PRICE INDEX FROM 9/6 TO 22/6/2022



GENERAL PRICE INDEX FROM 9/6 TO 22/6/2022

