

Daily Summary for Amman Stock Exchange

VALUE TRADED (JD)

	2021	2022	NET CHANGE	CHANGE (%)
Daily	11,645,130	9,679,135	-1,965,995	-16.88%
Cumulative (1/6-20/6)	174,888,481	118,332,746	-56,555,735	-32.34%
Cumulative (2/1-20/6)	1,043,045,815	860,503,926	-182,541,889	-17.50%

NO. OF SHARES TRADED

	2021	2022	NET CHANGE	CHANGE (%)
Daily	5,515,587	6,510,446	994,859	18.04%
Cumulative (1/6-20/6)	101,482,854	71,888,063	-29,594,791	-29.16%
Cumulative (2/1-20/6)	851,769,383	511,098,485	-340,670,898	-40.00%

NO. OF TRANSACTIONS

	2021	2022	NET CHANGE	CHANGE (%)
Daily	4,593	4,420	-173	-3.77%
Cumulative (1/6-20/6)	67,107	46,101	-21,006	-31.30%
Cumulative (2/1-20/6)	391,723	347,030	-44,693	-11.41%

SOME FINANCIAL RATIOS FOR THE ASE (20/6/2022)

SECTOR	P/E	P/BV	DIVIDEND YIELD (%)	TURNOVER (%)
FINANCIAL	13.585	0.823	5.053	0.112
SERVICES	17.334	1.318	4.392	0.091
INDUSTRY	12.288	2.807	4.081	0.090
OVERALL	13.173	1.241	4.660	0.105

STOCK PRICE INDEX WEIGHTED BY FREE FLOAT MARKET CAPITALIZATION (1999=1000)

	SUNDAY 19/06/2022	MONDAY 20/06/2022	% CHANGE	
			DAY BEFORE	YTD
GENERAL	2417.7	2397.1	-0.85%	13.14%
FINANCIAL	2608.7	2593.0	-0.60%	-0.44%
SERVICES	1578.9	1573.4	-0.35%	18.53%
INDUSTRY	5607.8	5504.0	-1.85%	50.14%

STOCK PRICE INDEX WEIGHTED BY FREE FLOAT MARKET CAPITALIZATION ASE20 (2014=1000)

	1288.5	1275.6	-1.00%	18.73%
--	--------	--------	--------	--------

Total Return Index ASETR (2021=1074)

	1369.7	1356.1	-1.00%	26.22%
--	--------	--------	--------	--------

STOCK PRICE INDEX WEIGHTED BY MARKET CAPITALIZATION (1991=1000)

	SUNDAY 19/06/2022	MONDAY 20/06/2022	% CHANGE	
			DAY BEFORE	YTD
GENERAL	4792.6	4719.4	-1.53%	17.83%
BANKS	6468.5	6420.3	-0.75%	-2.22%
INSURANCE	1298.4	1302.3	0.30%	-1.96%
SERVICES	776.6	771.1	-0.70%	-1.44%
INDUSTRY	7625.3	7432.8	-2.52%	58.13%

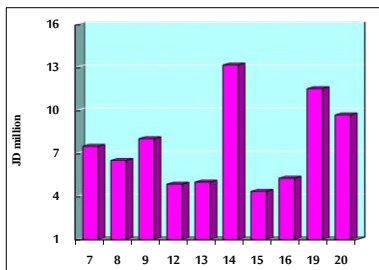
STOCK PRICE MARKET INDEX WEIGHTED BY FREE FLOAT MARKET CAP. (2012=1000)

	SUNDAY 19/06/2022	MONDAY 20/06/2022	% CHANGE	
			DAY BEFORE	YTD
FIRST MARKET	1348.7	1336.6	-0.90%	16.74%
SECOND MARKET	823.4	819.7	-0.44%	-12.48%

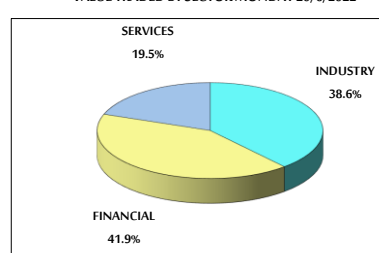
MARKET CAPITALIZATION (JD)

	18,243,160,385	17,977,199,787	-1.46%	16.01%
--	----------------	----------------	--------	--------

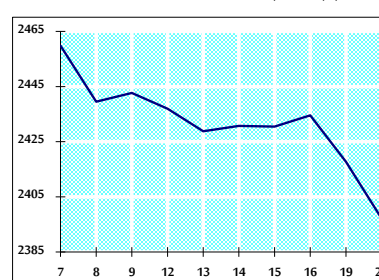
VALUE TRADED FROM 7/6 TO 20/6/2022



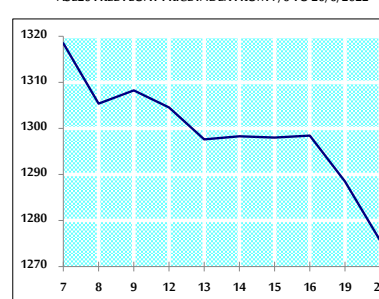
VALUE TRADED BY SECTOR MONDAY 20/6/2022



GENERAL FREE FLOAT PRICE INDEX FROM 7/6 TO 20/6/2022



ASE20 FREE FLOAT PRICE INDEX FROM 7/6 TO 20/6/2022



GENERAL PRICE INDEX FROM 7/6 TO 20/6/2022

