

Daily Summary for Amman Stock Exchange

VALUE TRADED (JD)

	2021	2022	NET CHANGE	CHANGE (%)
Daily	6,561,845	13,479,487	6,917,642	105.42%
Cumulative (8/5-16/5)	53,940,127	104,923,443	50,983,316	94.52%
Cumulative (2/1-16/5)	712,355,702	668,369,646	-43,986,056	-6.17%

NO. OF SHARES TRADED

	2021	2022	NET CHANGE	CHANGE (%)
Daily	6,322,654	6,566,924	244,270	3.86%
Cumulative (8/5-16/5)	42,400,315	45,665,319	3,265,004	7.70%
Cumulative (2/1-16/5)	654,749,731	397,860,854	-256,888,877	-39.23%

NO. OF TRANSACTIONS

	2021	2022	NET CHANGE	CHANGE (%)
Daily	3,411	4,846	1,435	42.07%
Cumulative (8/5-16/5)	25,049	32,490	7,441	29.71%
Cumulative (2/1-16/5)	269,565	268,234	-1,331	-0.49%

SOME FINANCIAL RATIOS FOR THE ASE (16/5/2022)

SECTOR	P/E	P/BV	DIVIDEND YIELD (%)	TURNOVER (%)
FINANCIAL	14.003	0.844	4.914	0.066
SERVICES	16.943	1.288	4.494	0.264
INDUSTRY	12.577	2.819	3.986	0.059
OVERALL	13.393	1.261	4.584	0.106

STOCK PRICE INDEX WEIGHTED BY FREE FLOAT MARKET CAPITALIZATION (1999=1000)

	SUNDAY 15/05/2022	MONDAY 16/05/2022	% CHANGE	
			DAY BEFORE	YTD
GENERAL	2458.5	2421.5	-1.51%	14.29%
FINANCIAL	2726.3	2686.7	-1.45%	3.16%
SERVICES	1540.0	1493.4	-3.03%	12.50%
INDUSTRY	5554.7	5569.1	0.26%	51.92%

STOCK PRICE INDEX WEIGHTED BY FREE FLOAT MARKET CAPITALIZATION ASE20 (2014=1000)

	1315.1	1294.9	-1.53%	20.53%
--	--------	--------	--------	--------

Total Return Index ASETR (2021=1074)

	1398.1	1376.6	-1.53%	28.13%
--	--------	--------	--------	--------

STOCK PRICE INDEX WEIGHTED BY MARKET CAPITALIZATION (1991=1000)

	SUNDAY 15/05/2022	MONDAY 16/05/2022	% CHANGE	
			DAY BEFORE	YTD
GENERAL	4843.2	4799.0	-0.91%	19.82%
BANKS	6736.2	6611.2	-1.86%	0.68%
INSURANCE	1371.5	1355.5	-1.17%	2.04%
SERVICES	777.4	768.3	-1.17%	-1.80%
INDUSTRY	7495.9	7505.9	0.13%	59.68%

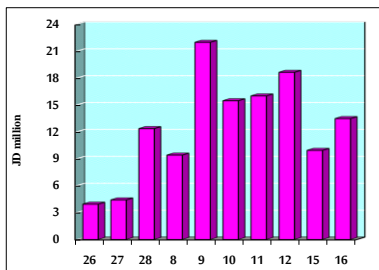
STOCK PRICE MARKET INDEX WEIGHTED BY FREE FLOAT MARKET CAP. (2012=1000)

	SUNDAY 15/05/2022	MONDAY 16/05/2022	% CHANGE	
			DAY BEFORE	YTD
FIRST MARKET	1374.6	1352.8	-1.59%	18.15%
SECOND MARKET	827.3	821.9	-0.65%	-12.24%

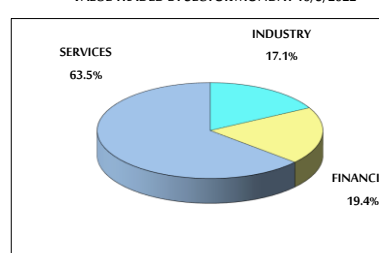
MARKET CAPITALIZATION (JD)

	18,477,782,331	18,318,174,400	-0.86%	18.21%
--	----------------	----------------	--------	--------

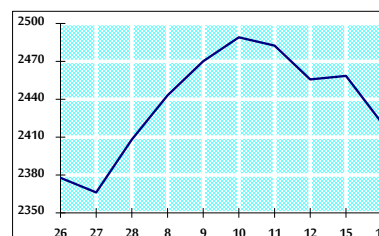
VALUE TRADED FROM 26/4 TO 16/5/2022



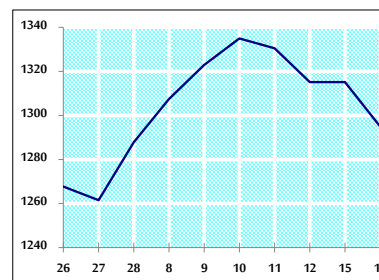
VALUE TRADED BY SECTOR MONDAY 16/5/2022



GENERAL FREE FLOAT PRICE INDEX FROM 26/4 TO 16/5/2022



ASE20 FREE FLOAT PRICE INDEX FROM 26/4 TO 16/5/2022



GENERAL PRICE INDEX FROM 26/4 TO 16/5/2022

