

Daily Summary for Amman Stock Exchange

VALUE TRADED (JD)

	2020	2021	NET CHANGE	CHANGE (%)
Daily	5,005,394	5,446,954	441,560	8.82%
Cumulative (1/9-15/9)	49,734,590	70,320,910	20,586,320	41.39%
Cumulative (3/1-15/9)	660,121,044	1,461,392,192	801,271,148	121.38%

NO. OF SHARES TRADED

	2020	2021	NET CHANGE	CHANGE (%)
Daily	6,539,174	4,908,718	-1,630,456	-24.93%
Cumulative (1/9-15/9)	76,501,096	59,356,888	-17,144,208	-22.41%
Cumulative (3/1-15/9)	705,658,102	1,151,676,124	446,018,022	63.21%

NO. OF TRANSACTIONS

	2020	2021	NET CHANGE	CHANGE (%)
Daily	2,471	2,814	343	13.88%
Cumulative (1/9-15/9)	29,647	36,805	7,158	24.14%
Cumulative (3/1-15/9)	276,788	580,825	304,037	109.84%

SOME FINANCIAL RATIOS FOR THE ASE (15/9/2021)

SECTOR	P/E	P/BV	DIVIDEND YIELD (%)	TURNOVER (%)
FINANCIAL	34.707	0.861	3.301	0.075
SERVICES	-	1.223	2.269	0.068
INDUSTRY	27.052	2.165	2.651	0.118
OVERALL	37.688	1.105	2.980	0.078

STOCK PRICE INDEX WEIGHTED BY FREE FLOAT MARKET CAPITALIZATION (1999=1000)

	TUESDAY 14/09/2021	WEDNESDAY 15/09/2021	% CHANGE	
			DAY BEFORE	YTD
GENERAL	2076.5	2073.9	-0.13%	25.14%
FINANCIAL	2542.2	2538.2	-0.16%	16.88%
SERVICES	1293.3	1295.0	0.13%	12.81%
INDUSTRY	3674.1	3663.3	-0.29%	72.82%

STOCK PRICE INDEX WEIGHTED BY FREE FLOAT MARKET CAPITALIZATION ASE20 (2014=1000)

	1060.6	1058.0	-0.25%	31.18%
--	--------	--------	--------	--------

STOCK PRICE INDEX WEIGHTED BY MARKET CAPITALIZATION (1991=1000)

	TUESDAY 14/09/2021	WEDNESDAY 15/09/2021	% CHANGE	
			DAY BEFORE	YTD
GENERAL	4003.1	3996.0	-0.18%	31.03%
BANKS	6523.2	6518.3	-0.08%	20.47%
INSURANCE	1256.6	1258.0	0.12%	-3.91%
SERVICES	780.9	783.9	0.38%	11.31%
INDUSTRY	4755.4	4728.1	-0.57%	67.78%

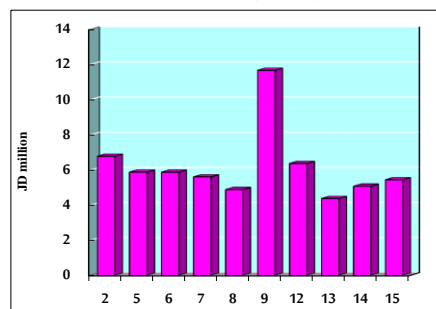
STOCK PRICE MARKET INDEX WEIGHTED BY FREE FLOAT MARKET CAP. (2012=1000)

	TUESDAY 14/09/2021	WEDNESDAY 15/09/2021	% CHANGE	
			DAY BEFORE	YTD
FIRST MARKET	1120.2	1118.0	-0.19%	28.75%
SECOND MARKET	938.5	940.3	0.19%	7.91%

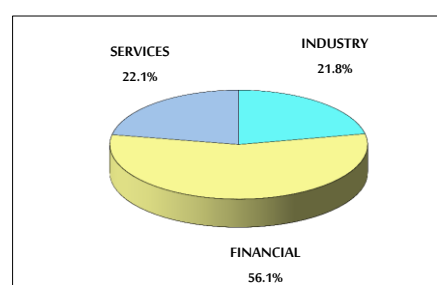
MARKET CAPITALIZATION (JD)

	15,479,442,708	15,453,749,865	-0.17%	19.72%
--	----------------	----------------	--------	--------

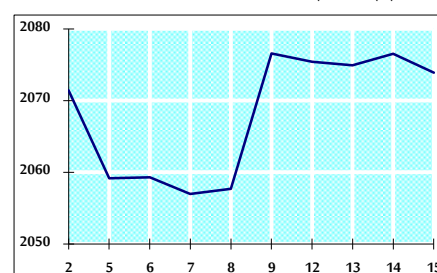
VALUE TRADED FROM 2/9 TO 15/9/2021



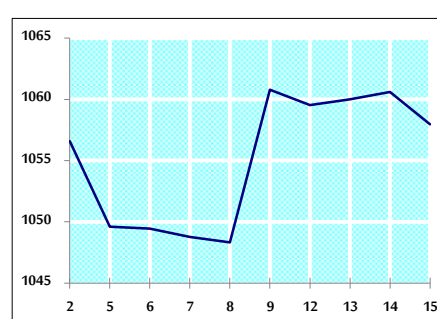
VALUE TRADED BY SECTOR WEDNESDAY 15/9/2021



GENERAL FREE FLOAT PRICE INDEX FROM 2/9 TO 15/9/2021



ASE20 FREE FLOAT PRICE INDEX FROM 2/9 TO 15/9/2021



GENERAL PRICE INDEX FROM 2/9 TO 15/9/2021

