

Daily Summary for Amman Stock Exchange

VALUE TRADED (JD)

	2020	2021	NET CHANGE	CHANGE (%)
Daily	25,553,087	5,989,067	-19,564,020	-76.56%
Cumulative(1/2-10/2)	59,462,720	54,409,093	-5,053,627	-8.50%
Cumulative(3/1-10/2)	164,492,577	266,498,601	102,006,024	62.01%

NO. OF SHARES TRADED

	2020	2021	NET CHANGE	CHANGE (%)
Daily	17,549,883	6,403,606	-11,146,277	-63.51%
Cumulative(1/2-10/2)	53,721,368	53,425,719	-295,649	-0.55%
Cumulative(3/1-10/2)	146,819,972	253,076,948	106,256,976	72.37%

NO. OF TRANSACTIONS

	2020	2021	NET CHANGE	CHANGE (%)
Daily	2,510	3,348	838	33.39%
Cumulative(1/2-10/2)	19,102	24,255	5,153	26.98%
Cumulative(3/1-10/2)	63,256	89,391	26,135	41.32%

SOME FINANCIAL RATIOS FOR THE ASE (10/2/2021)

SECTOR	P/E	P/BV	DIVIDEND YIELD (%)	TURNOVER (%)
FINANCIAL	9.326	0.755	0.491	0.073
SERVICES	12.206	1.064	4.995	0.112
INDUSTRY	19.668	1.556	3.170	0.227
OVERALL	10.766	0.907	1.905	0.101

STOCK PRICE INDEX WEIGHTED BY FREE FLOAT MARKET CAPITALIZATION (1999=1000)

	TUESDAY 09/02/2021	WEDNESDAY 10/02/2021	% CHANGE	
			DAY BEFORE	YTD
GENERAL	1744.8	1734.3	-0.60%	4.65%
FINANCIAL	2257.3	2252.4	-0.22%	3.72%
SERVICES	1173.0	1153.9	-1.63%	0.51%
INDUSTRY	2446.1	2441.2	-0.20%	15.16%

STOCK PRICE INDEX WEIGHTED BY FREE FLOAT MARKET CAPITALIZATION ASE20 (2014=1000)

	854.5	848.5	-0.71%	5.21%
--	-------	-------	--------	-------

STOCK PRICE INDEX WEIGHTED BY MARKET CAPITALIZATION (1991=1000)

	TUESDAY 09/02/2021	WEDNESDAY 10/02/2021	% CHANGE	
			DAY BEFORE	YTD
GENERAL	3266.9	3258.7	-0.25%	6.86%
BANKS	5508.5	5488.5	-0.36%	1.44%
INSURANCE	1271.9	1270.7	-0.10%	-2.94%
SERVICES	725.3	723.6	-0.25%	2.74%
INDUSTRY	3425.1	3423.2	-0.06%	21.47%

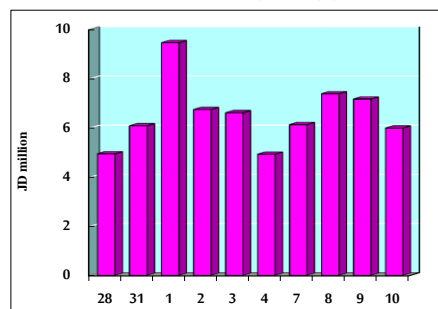
STOCK PRICE MARKET INDEX WEIGHTED BY FREE FLOAT MARKET CAP. (2012=1000)

	TUESDAY 09/02/2021	WEDNESDAY 10/02/2021	% CHANGE	
			DAY BEFORE	YTD
FIRST MARKET	915.8	909.7	-0.66%	4.76%
SECOND MARKET	917.6	914.2	-0.38%	4.91%

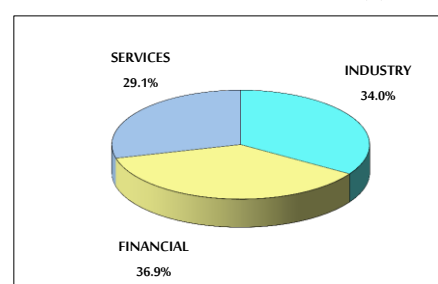
MARKET CAPITALIZATION (JD)

	13,705,963,535	13,675,106,043	-0.23%	5.94%
--	----------------	----------------	--------	-------

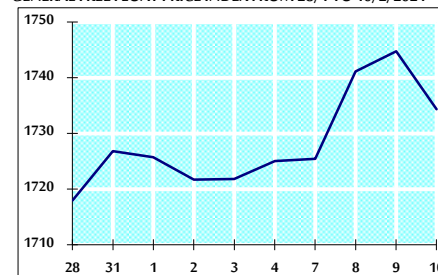
VALUE TRADED FROM 28/1 TO 10/2/2021



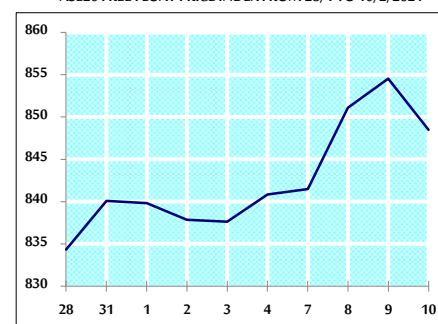
VALUE TRADED BY SECTOR WEDNESDAY 10/2/2021



GENERAL FREE FLOAT PRICE INDEX FROM 28/1 TO 10/2/2021



ASE20 FREE FLOAT PRICE INDEX FROM 28/1 TO 10/2/2021



GENERAL PRICE INDEX FROM 28/1 TO 10/2/2021

