

Daily Summary for Amman Stock Exchange

VALUE TRADED (JD)

| | 2020 | 2021 | NET CHANGE | CHANGE (%) |
|---------------------|-------------|-------------|-------------|------------|
| Daily | 6,383,167 | 7,167,995 | 784,828 | 12.30% |
| Cumulative(1/2-9/2) | 33,909,633 | 48,420,026 | 14,510,393 | 42.79% |
| Cumulative(3/1-9/2) | 138,939,490 | 260,509,534 | 121,570,044 | 87.50% |

NO. OF SHARES TRADED

| | 2020 | 2021 | NET CHANGE | CHANGE (%) |
|---------------------|-------------|-------------|-------------|------------|
| Daily | 6,497,855 | 6,701,676 | 203,821 | 3.14% |
| Cumulative(1/2-9/2) | 36,171,485 | 47,022,113 | 10,850,628 | 30.00% |
| Cumulative(3/1-9/2) | 129,270,089 | 246,673,342 | 117,403,253 | 90.82% |

NO. OF TRANSACTIONS

| | 2020 | 2021 | NET CHANGE | CHANGE (%) |
|---------------------|--------|--------|------------|------------|
| Daily | 2,251 | 3,351 | 1,100 | 48.87% |
| Cumulative(1/2-9/2) | 16,592 | 20,907 | 4,315 | 26.01% |
| Cumulative(3/1-9/2) | 60,746 | 86,043 | 25,297 | 41.64% |

SOME FINANCIAL RATIOS FOR THE ASE (9/2/2021)

| SECTOR | P/E | P/BV | DIVIDEND YIELD (%) | TURNOVER (%) |
|-----------|--------|-------|--------------------|--------------|
| FINANCIAL | 9.356 | 0.758 | 0.490 | 0.096 |
| SERVICES | 12.316 | 1.073 | 4.950 | 0.132 |
| INDUSTRY | 19.609 | 1.552 | 3.180 | 0.113 |
| OVERALL | 10.793 | 0.909 | 1.900 | 0.105 |

STOCK PRICE INDEX WEIGHTED BY FREE FLOAT MARKET CAPITALIZATION (1999=1000)

| | MONDAY 08/02/2021 | TUESDAY 09/02/2021 | % CHANGE | |
|-----------|----------------------|-----------------------|------------|--------|
| | | | DAY BEFORE | YTD |
| GENERAL | 1741.2 | 1744.8 | 0.21% | 5.28% |
| FINANCIAL | 2264.5 | 2257.3 | -0.32% | 3.94% |
| SERVICES | 1160.5 | 1173.0 | 1.08% | 2.17% |
| INDUSTRY | 2415.3 | 2446.1 | 1.27% | 15.40% |

STOCK PRICE INDEX WEIGHTED BY FREE FLOAT MARKET CAPITALIZATION ASE20 (2014=1000)

| | | | | |
|--|-------|-------|-------|-------|
| | 851.1 | 854.5 | 0.40% | 5.96% |
|--|-------|-------|-------|-------|

STOCK PRICE INDEX WEIGHTED BY MARKET CAPITALIZATION (1991=1000)

| | MONDAY 08/02/2021 | TUESDAY 09/02/2021 | % CHANGE | |
|-----------|----------------------|-----------------------|------------|--------|
| | | | DAY BEFORE | YTD |
| GENERAL | 3253.4 | 3266.9 | 0.42% | 7.13% |
| BANKS | 5529.9 | 5508.5 | -0.39% | 1.81% |
| INSURANCE | 1273.2 | 1271.9 | -0.10% | -2.85% |
| SERVICES | 726.1 | 725.3 | -0.10% | 3.00% |
| INDUSTRY | 3351.6 | 3425.1 | 2.19% | 21.54% |

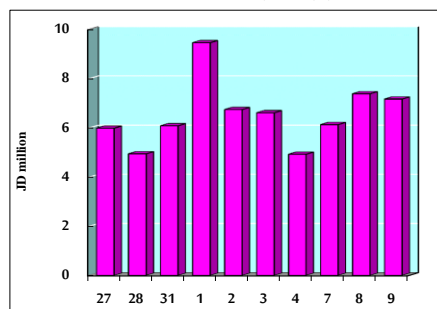
STOCK PRICE MARKET INDEX WEIGHTED BY FREE FLOAT MARKET CAP. (2012=1000)

| | MONDAY 08/02/2021 | TUESDAY 09/02/2021 | % CHANGE | |
|---------------|----------------------|-----------------------|------------|-------|
| | | | DAY BEFORE | YTD |
| FIRST MARKET | 912.6 | 915.8 | 0.35% | 5.46% |
| SECOND MARKET | 921.2 | 917.6 | -0.39% | 5.31% |

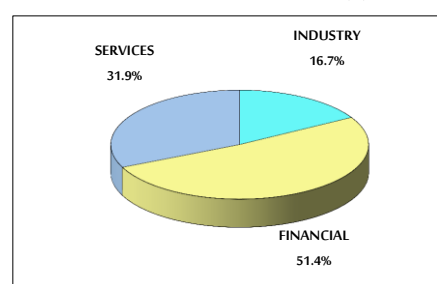
MARKET CAPITALIZATION (JD)

| | | | | |
|--|----------------|----------------|-------|-------|
| | 13,655,503,525 | 13,705,963,535 | 0.37% | 6.18% |
|--|----------------|----------------|-------|-------|

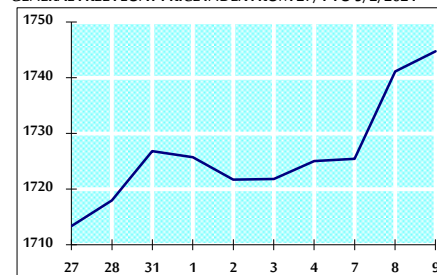
VALUE TRADED FROM 27/1 TO 9/2/2021



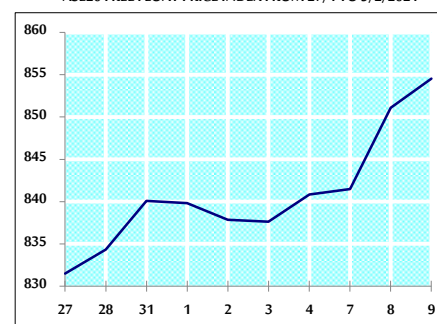
VALUE TRADED BY SECTOR TUESDAY 9/2/2021



GENERAL FREE FLOAT PRICE INDEX FROM 27/1 TO 9/2/2021



ASE20 FREE FLOAT PRICE INDEX FROM 27/1 TO 9/2/2021



GENERAL PRICE INDEX FROM 27/1 TO 9/2/2021

