

### Daily Summary for Amman Stock Exchange

VALUE TRADED (JD)

|                     | 2020        | 2021        | NET CHANGE  | CHANGE (%) |
|---------------------|-------------|-------------|-------------|------------|
| Daily               | 4,672,594   | 7,382,745   | 2,710,151   | 58.00%     |
| Cumulative(1/2-8/2) | 27,526,466  | 41,252,031  | 13,725,565  | 49.86%     |
| Cumulative(3/1-8/2) | 132,556,323 | 253,341,539 | 120,785,216 | 91.12%     |

NO. OF SHARES TRADED

|                     | 2020        | 2021        | NET CHANGE  | CHANGE (%) |
|---------------------|-------------|-------------|-------------|------------|
| Daily               | 4,869,346   | 7,061,595   | 2,192,249   | 45.02%     |
| Cumulative(1/2-8/2) | 29,673,630  | 40,320,437  | 10,646,807  | 35.88%     |
| Cumulative(3/1-8/2) | 122,772,234 | 239,971,666 | 117,199,432 | 95.46%     |

NO. OF TRANSACTIONS

|                     | 2020   | 2021   | NET CHANGE | CHANGE (%) |
|---------------------|--------|--------|------------|------------|
| Daily               | 2,183  | 2,837  | 654        | 29.96%     |
| Cumulative(1/2-8/2) | 14,341 | 17,556 | 3,215      | 22.42%     |
| Cumulative(3/1-8/2) | 58,495 | 82,692 | 24,197     | 41.37%     |

SOME FINANCIAL RATIOS FOR THE ASE (8/2/2021)

| SECTOR    | P/E    | P/BV  | DIVIDEND YIELD (%) | TURNOVER (%) |
|-----------|--------|-------|--------------------|--------------|
| FINANCIAL | 9.390  | 0.760 | 0.488              | 0.060        |
| SERVICES  | 12.249 | 1.067 | 4.977              | 0.124        |
| INDUSTRY  | 19.217 | 1.521 | 3.244              | 0.365        |
| OVERALL   | 10.748 | 0.905 | 1.908              | 0.111        |

STOCK PRICE INDEX WEIGHTED BY FREE FLOAT MARKET CAPITALIZATION (1999=1000)

|           | SUNDAY<br>07/02/2021 | MONDAY<br>08/02/2021 | % CHANGE   |        |
|-----------|----------------------|----------------------|------------|--------|
|           |                      |                      | DAY BEFORE | YTD    |
| GENERAL   | 1725.5               | 1741.2               | 0.91%      | 5.06%  |
| FINANCIAL | 2261.9               | 2264.5               | 0.11%      | 4.27%  |
| SERVICES  | 1140.9               | 1160.5               | 1.72%      | 1.09%  |
| INDUSTRY  | 2361.1               | 2415.3               | 2.30%      | 13.95% |

STOCK PRICE INDEX WEIGHTED BY FREE FLOAT MARKET CAPITALIZATION ASE20 (2014=1000)

|  |       |       |       |       |
|--|-------|-------|-------|-------|
|  | 841.5 | 851.1 | 1.14% | 5.53% |
|--|-------|-------|-------|-------|

STOCK PRICE INDEX WEIGHTED BY MARKET CAPITALIZATION (1991=1000)

|           | SUNDAY<br>07/02/2021 | MONDAY<br>08/02/2021 | % CHANGE   |        |
|-----------|----------------------|----------------------|------------|--------|
|           |                      |                      | DAY BEFORE | YTD    |
| GENERAL   | 3211.3               | 3253.4               | 1.31%      | 6.68%  |
| BANKS     | 5522.3               | 5529.9               | 0.14%      | 2.20%  |
| INSURANCE | 1282.2               | 1273.2               | -0.71%     | -2.75% |
| SERVICES  | 723.0                | 726.1                | 0.43%      | 3.10%  |
| INDUSTRY  | 3219.3               | 3351.6               | 4.11%      | 18.93% |

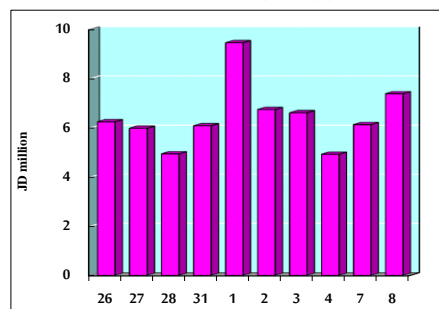
STOCK PRICE MARKET INDEX WEIGHTED BY FREE FLOAT MARKET CAP. (2012=1000)

|               | SUNDAY<br>07/02/2021 | MONDAY<br>08/02/2021 | % CHANGE   |       |
|---------------|----------------------|----------------------|------------|-------|
|               |                      |                      | DAY BEFORE | YTD   |
| FIRST MARKET  | 902.9                | 912.6                | 1.07%      | 5.09% |
| SECOND MARKET | 921.0                | 921.2                | 0.02%      | 5.72% |

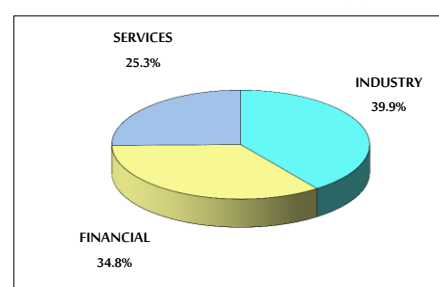
MARKET CAPITALIZATION (JD)

|  |                |                |       |       |
|--|----------------|----------------|-------|-------|
|  | 13,509,014,758 | 13,655,503,525 | 1.08% | 5.79% |
|--|----------------|----------------|-------|-------|

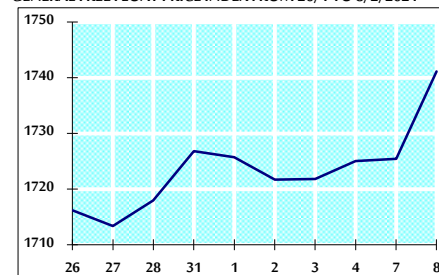
VALUE TRADED FROM 26/1 TO 8/2/2021



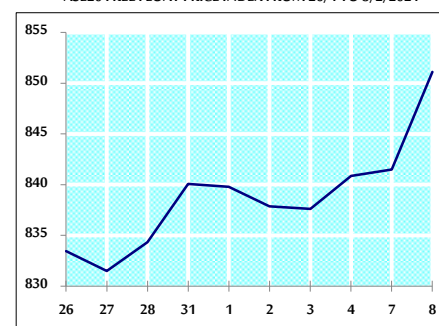
VALUE TRADED BY SECTOR MONDAY 8/2/2021



GENERAL FREE FLOAT PRICE INDEX FROM 26/1 TO 8/2/2021



ASE20 FREE FLOAT PRICE INDEX FROM 26/1 TO 8/2/2021



GENERAL PRICE INDEX FROM 26/1 TO 8/2/2021

