

## Daily Summary for Amman Stock Exchange

### VALUE TRADED (JD)

	2020	2021	NET CHANGE	CHANGE (%)
Daily	4,370,606	4,929,986	559,380	12.80%
Cumulative(1/2-4/2)	18,724,179	27,738,229	9,014,050	48.14%
Cumulative(3/1-4/2)	123,754,036	239,827,737	116,073,701	93.79%

### NO. OF SHARES TRADED

	2020	2021	NET CHANGE	CHANGE (%)
Daily	5,056,628	5,630,018	573,390	11.34%
Cumulative(1/2-4/2)	19,951,378	27,582,163	7,630,785	38.25%
Cumulative(3/1-4/2)	113,049,982	227,233,392	114,183,410	101.00%

### NO. OF TRANSACTIONS

	2020	2021	NET CHANGE	CHANGE (%)
Daily	2,363	2,626	263	11.13%
Cumulative(1/2-4/2)	10,073	11,807	1,734	17.21%
Cumulative(3/1-4/2)	54,227	76,943	22,716	41.89%

### SOME FINANCIAL RATIOS FOR THE ASE (4/2/2021)

SECTOR	P/E	P/BV	DIVIDEND YIELD (%)	TURNOVER (%)
FINANCIAL	9.449	0.765	0.485	0.081
SERVICES	12.087	1.053	5.044	0.076
INDUSTRY	19.308	1.405	3.402	0.147
OVERALL	10.547	0.888	1.944	0.088

### STOCK PRICE INDEX WEIGHTED BY FREE FLOAT MARKET CAPITALIZATION (1999=1000)

	WEDNESDAY 03/02/2021	THURSDAY 04/02/2021	% CHANGE	
			DAY BEFORE	YTD
GENERAL	1721.8	1725.1	0.19%	4.09%
FINANCIAL	2266.0	2271.4	0.24%	4.59%
SERVICES	1144.0	1139.8	-0.37%	-0.72%
INDUSTRY	2292.7	2310.4	0.77%	8.99%

### STOCK PRICE INDEX WEIGHTED BY FREE FLOAT MARKET CAPITALIZATION ASE20 (2014=1000)

	837.6	840.9	0.38%	4.26%
--	-------	-------	-------	-------

### STOCK PRICE INDEX WEIGHTED BY MARKET CAPITALIZATION (1991=1000)

	WEDNESDAY 03/02/2021	THURSDAY 04/02/2021	% CHANGE	
			DAY BEFORE	YTD
GENERAL	3170.4	3192.4	0.69%	4.68%
BANKS	5548.7	5566.2	0.32%	2.88%
INSURANCE	1280.2	1281.9	0.13%	-2.08%
SERVICES	728.7	723.9	-0.67%	2.79%
INDUSTRY	3030.4	3100.0	2.30%	10.01%

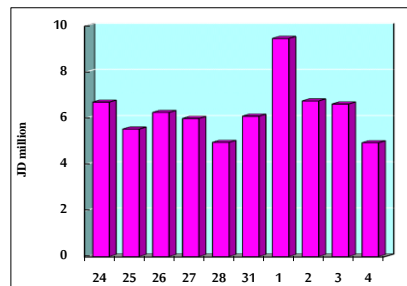
### STOCK PRICE MARKET INDEX WEIGHTED BY FREE FLOAT MARKET CAP. (2012=1000)

	WEDNESDAY 03/02/2021	THURSDAY 04/02/2021	% CHANGE	
			DAY BEFORE	YTD
FIRST MARKET	899.0	902.1	0.35%	3.88%
SECOND MARKET	928.7	923.1	-0.61%	5.93%

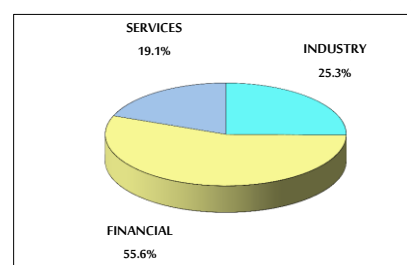
### MARKET CAPITALIZATION (JD)

	13,362,890,009	13,440,939,062	0.58%	4.13%
--	----------------	----------------	-------	-------

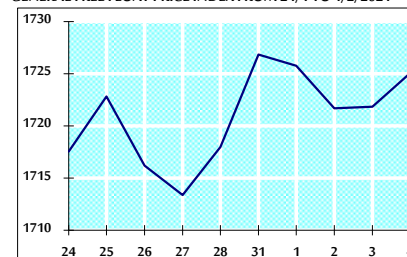
### VALUE TRADED FROM 24/1 TO 4/2/2021



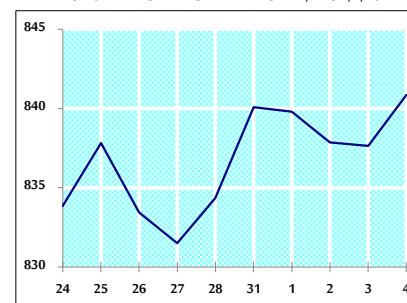
### VALUE TRADED BY SECTOR THURSDAY 4/2/2021



### GENERAL FREE FLOAT PRICE INDEX FROM 24/1 TO 4/2/2021



### ASE20 FREE FLOAT PRICE INDEX FROM 24/1 TO 4/2/2021



### GENERAL PRICE INDEX FROM 24/1 TO 4/2/2021

