

Daily Summary for Amman Stock Exchange

VALUE TRADED (JD)

	2020	2021	NET CHANGE	CHANGE (%)
Daily	5,088,376	7,786,911	2,698,535	53.03%
Cumulative(3/1-14/1)	43,121,761	84,960,461	41,838,700	97.02%
Cumulative(3/1-14/1)	43,121,761	84,960,461	41,838,700	97.02%

NO. OF SHARES TRADED

	2020	2021	NET CHANGE	CHANGE (%)
Daily	3,859,136	8,931,209	5,072,073	131.43%
Cumulative(3/1-14/1)	37,990,432	112,460,165	74,469,733	196.02%
Cumulative(3/1-14/1)	37,990,432	112,460,165	74,469,733	196.02%

NO. OF TRANSACTIONS

	2020	2021	NET CHANGE	CHANGE (%)
Daily	2,354	2,911	557	23.66%
Cumulative(3/1-14/1)	18,419	30,676	12,257	66.55%
Cumulative(3/1-14/1)	18,419	30,676	12,257	66.55%

SOME FINANCIAL RATIOS FOR THE ASE (14/1/2021)

SECTOR	P/E	P/BV	DIVIDEND YIELD (%)	TURNOVER (%)
FINANCIAL	9.661	0.782	0.161	0.137
SERVICES	12.139	1.058	5.022	0.137
INDUSTRY	17.519	1.274	3.749	0.162
OVERALL	10.460	0.881	1.749	0.140

STOCK PRICE INDEX WEIGHTED BY FREE FLOAT MARKET CAPITALIZATION (1999=1000)

	WEDNESDAY 13/01/2021	THURSDAY 14/01/2021	% CHANGE	
			DAY BEFORE	YTD
GENERAL	1717.7	1722.3	0.27%	3.93%
FINANCIAL	2275.3	2283.1	0.35%	5.13%
SERVICES	1157.9	1159.3	0.12%	0.98%
INDUSTRY	2132.5	2134.9	0.11%	0.72%

STOCK PRICE INDEX WEIGHTED BY FREE FLOAT MARKET CAPITALIZATION ASE20 (2014=1000)

	837.0	839.2	0.26%	4.05%
--	-------	-------	-------	-------

STOCK PRICE INDEX WEIGHTED BY MARKET CAPITALIZATION (1991=1000)

	WEDNESDAY 13/01/2021	THURSDAY 14/01/2021	% CHANGE	
			DAY BEFORE	YTD
GENERAL	3158.8	3163.5	0.15%	3.74%
BANKS	5689.2	5712.7	0.41%	5.58%
INSURANCE	1293.6	1293.3	-0.02%	-1.21%
SERVICES	722.8	726.2	0.47%	3.11%
INDUSTRY	2842.6	2824.6	-0.63%	0.23%

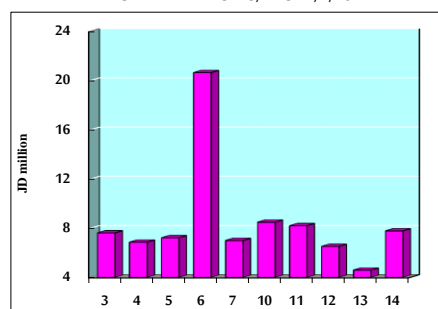
STOCK PRICE MARKET INDEX WEIGHTED BY FREE FLOAT MARKET CAP. (2012=1000)

	WEDNESDAY 13/01/2021	THURSDAY 14/01/2021	% CHANGE	
			DAY BEFORE	YTD
FIRST MARKET	898.9	901.7	0.31%	3.83%
SECOND MARKET	906.2	905.7	-0.06%	3.94%

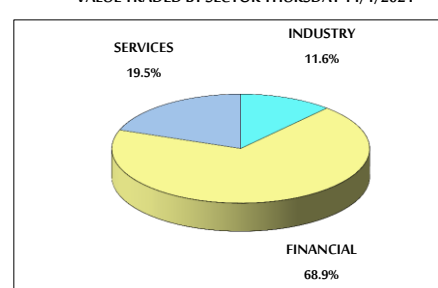
MARKET CAPITALIZATION (JD)

	13,293,225,172	13,316,554,200	0.18%	3.17%
--	----------------	----------------	-------	-------

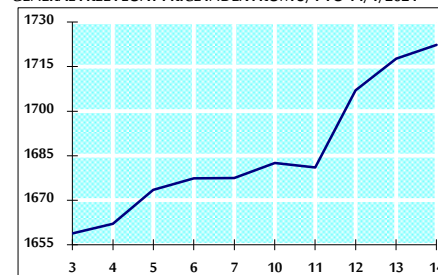
VALUE TRADED FROM 3/1 TO 14/1/2021



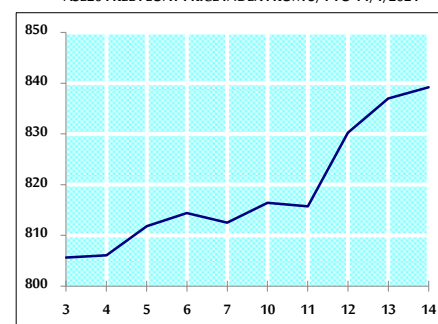
VALUE TRADED BY SECTOR THURSDAY 14/1/2021



GENERAL FREE FLOAT PRICE INDEX FROM 3/1 TO 14/1/2021



ASE20 FREE FLOAT PRICE INDEX FROM 3/1 TO 14/1/2021



GENERAL PRICE INDEX FROM 3/1 TO 14/1/2021

