

Daily Summary for Amman Stock Exchange

VALUE TRADED (JD)

	2019	2020	NET CHANGE	CHANGE (%)
Daily	4,553,517	4,292,936	-260,581	-5.72%
Cumulative(4/8-16/8)	36,100,248	47,369,614	11,269,366	31.22%
Cumulative(2/1-16/8)	853,909,479	564,476,768	-289,432,711	-33.90%

NO. OF SHARES TRADED

	2019	2020	NET CHANGE	CHANGE (%)
Daily	4,078,199	4,575,090	496,891	12.18%
Cumulative(4/8-16/8)	34,581,540	53,196,021	18,614,481	53.83%
Cumulative(2/1-16/8)	723,368,278	572,362,445	-151,005,833	-20.88%

NO. OF TRANSACTIONS

	2019	2020	NET CHANGE	CHANGE (%)
Daily	1,833	1,577	-256	-13.97%
Cumulative(4/8-16/8)	17,109	19,291	2,182	12.75%
Cumulative(2/1-16/8)	321,582	225,700	-95,882	-29.82%

SOME FINANCIAL RATIOS FOR THE ASE (16/8/2020)

SECTOR	P/E	P/BV	DIVIDEND YIELD (%)	TURNOVER (%)
FINANCIAL	9.169	0.744	0.169	0.084
SERVICES	11.935	0.985	5.315	0.054
INDUSTRY	15.560	1.270	3.383	0.042
OVERALL	9.848	0.864	1.808	0.072

STOCK PRICE INDEX WEIGHTED BY FREE FLOAT MARKET CAPITALIZATION (1999=1000)

	THURSDAY 13/08/2020	SUNDAY 16/08/2020	% CHANGE	
			DAY BEFORE	YTD
GENERAL	1569.6	1576.5	0.44%	-13.15%
FINANCIAL	2084.0	2097.8	0.67%	-14.37%
SERVICES	1106.2	1107.5	0.12%	-14.35%
INDUSTRY	1827.5	1827.4	-0.01%	-1.59%

STOCK PRICE INDEX WEIGHTED BY FREE FLOAT MARKET CAPITALIZATION ASE20 (2014=1000)

	767.3	771.7	0.58%	-13.39%
--	-------	-------	-------	---------

STOCK PRICE INDEX WEIGHTED BY MARKET CAPITALIZATION (1991=1000)

	THURSDAY 13/08/2020	SUNDAY 16/08/2020	% CHANGE	
			DAY BEFORE	YTD
GENERAL	2900.4	2907.0	0.23%	-17.27%
BANKS	5426.6	5446.3	0.36%	-23.24%
INSURANCE	1304.2	1304.2	0.00%	1.69%
SERVICES	662.8	663.0	0.03%	-9.88%
INDUSTRY	2383.1	2385.2	0.09%	-8.72%

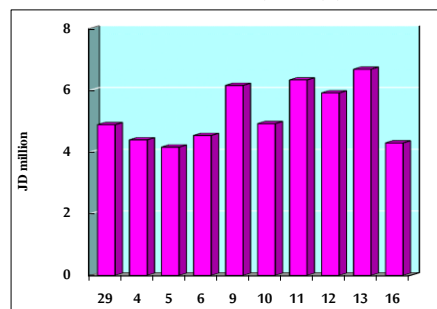
STOCK PRICE MARKET INDEX WEIGHTED BY FREE FLOAT MARKET CAP. (2012=1000)

	THURSDAY 13/08/2020	SUNDAY 16/08/2020	% CHANGE	
			DAY BEFORE	YTD
FIRST MARKET	824.9	829.2	0.52%	-13.25%
SECOND MARKET	779.8	779.5	-0.05%	-6.77%

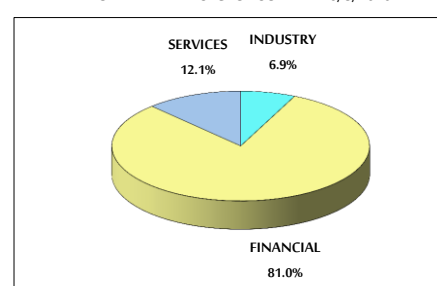
MARKET CAPITALIZATION (JD)

	12,300,594,517	12,327,404,366	0.22%	-17.35%
--	----------------	----------------	-------	---------

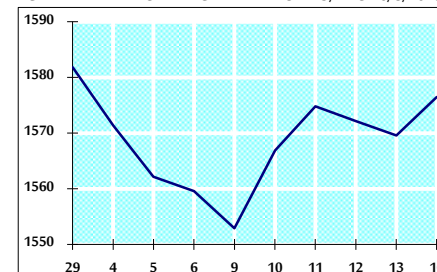
VALUE TRADED FROM 29/7 TO 16/8/2020



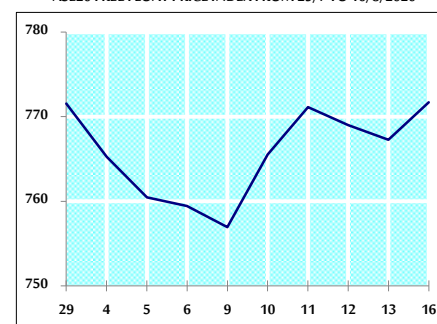
VALUE TRADED BY SECTOR SUNDAY 16/8/2020



GENERAL FREE FLOAT PRICE INDEX FROM 29/7 TO 16/8/2020



ASE20 FREE FLOAT PRICE INDEX FROM 29/7 TO 16/8/2020



GENERAL PRICE INDEX FROM 29/7 TO 16/8/2020

