

Daily Summary for Amman Stock Exchange

VALUE TRADED (JD)

	2019	2020	NET CHANGE	CHANGE (%)
Daily	5,170,217	6,675,489	1,505,272	29.11%
Cumulative(4/8-13/8)	31,546,731	43,076,678	11,529,947	36.55%
Cumulative(2/1-13/8)	849,355,962	560,183,832	-289,172,130	-34.05%

NO. OF SHARES TRADED

	2019	2020	NET CHANGE	CHANGE (%)
Daily	5,074,015	6,562,064	1,488,049	29.33%
Cumulative(4/8-13/8)	30,503,341	48,620,931	18,117,590	59.40%
Cumulative(2/1-13/8)	719,290,079	567,787,355	-151,502,724	-21.06%

NO. OF TRANSACTIONS

	2019	2020	NET CHANGE	CHANGE (%)
Daily	1,741	1,858	117	6.72%
Cumulative(4/8-13/8)	15,276	17,714	2,438	15.96%
Cumulative(2/1-13/8)	319,749	224,123	-95,626	-29.91%

SOME FINANCIAL RATIOS FOR THE ASE (13/8/2020)

SECTOR	P/E	P/BV	DIVIDEND YIELD (%)	TURNOVER (%)
FINANCIAL	9.140	0.742	0.170	0.104
SERVICES	11.912	0.983	5.326	0.080
INDUSTRY	15.558	1.270	3.384	0.136
OVERALL	9.825	0.862	1.812	0.104

STOCK PRICE INDEX WEIGHTED BY FREE FLOAT MARKET CAPITALIZATION (1999=1000)

	WEDNESDAY 12/08/2020	THURSDAY 13/08/2020	% CHANGE	
			DAY BEFORE	YTD
GENERAL	1572.2	1569.6	-0.17%	-13.53%
FINANCIAL	2085.3	2084.0	-0.07%	-14.94%
SERVICES	1111.2	1106.2	-0.45%	-14.45%
INDUSTRY	1827.9	1827.5	-0.02%	-1.59%

STOCK PRICE INDEX WEIGHTED BY FREE FLOAT MARKET CAPITALIZATION ASE20 (2014=1000)

	769.0	767.3	-0.23%	-13.88%
--	-------	-------	--------	---------

STOCK PRICE INDEX WEIGHTED BY MARKET CAPITALIZATION (1991=1000)

	WEDNESDAY 12/08/2020	THURSDAY 13/08/2020	% CHANGE	
			DAY BEFORE	YTD
GENERAL	2897.0	2900.4	0.12%	-17.46%
BANKS	5424.8	5426.6	0.03%	-23.52%
INSURANCE	1305.1	1304.2	-0.07%	1.69%
SERVICES	659.4	662.8	0.52%	-9.91%
INDUSTRY	2381.7	2383.1	0.06%	-8.80%

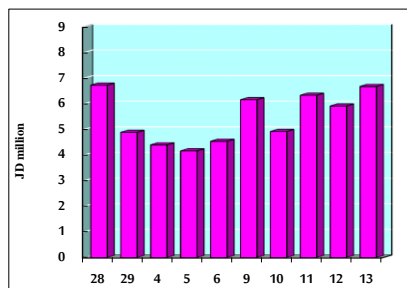
STOCK PRICE MARKET INDEX WEIGHTED BY FREE FLOAT MARKET CAP. (2012=1000)

	WEDNESDAY 12/08/2020	THURSDAY 13/08/2020	% CHANGE	
			DAY BEFORE	YTD
FIRST MARKET	826.9	824.9	-0.23%	-13.70%
SECOND MARKET	779.2	779.8	0.08%	-6.72%

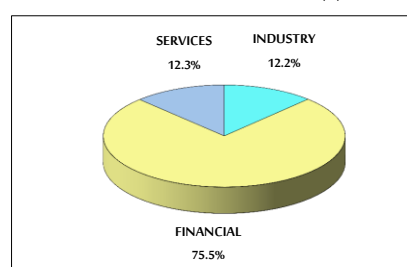
MARKET CAPITALIZATION (JD)

	12,286,756,943	12,300,594,517	0.11%	-17.53%
--	----------------	----------------	-------	---------

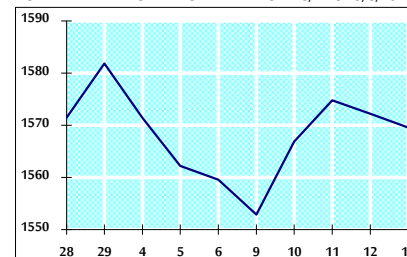
VALUE TRADED FROM 28/7 TO 13/8/2020



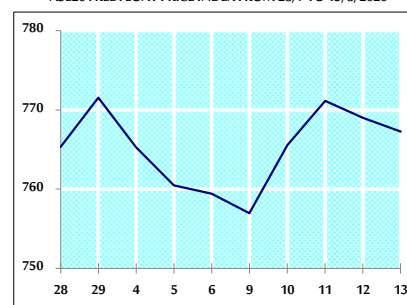
VALUE TRADED BY SECTOR THURSDAY 13/8/2020



GENERAL FREE FLOAT PRICE INDEX FROM 28/7 TO 13/8/2020



ASE20 FREE FLOAT PRICE INDEX FROM 28/7 TO 13/8/2020



GENERAL PRICE INDEX FROM 28/7 TO 13/8/2020

