

Daily Summary for Amman Stock Exchange

VALUE TRADED (JD)

	2019	2020	NET CHANGE	CHANGE (%)
Daily	2,726,783	5,909,909	3,183,126	116.74%
Cumulative(4/8-12/8)	26,376,514	36,401,189	10,024,675	38.01%
Cumulative(2/1-12/8)	844,185,745	553,508,343	-290,677,402	-34.43%

NO. OF SHARES TRADED

	2019	2020	NET CHANGE	CHANGE (%)
Daily	2,762,750	6,975,967	4,213,217	152.50%
Cumulative(4/8-12/8)	25,429,326	42,058,867	16,629,541	65.40%
Cumulative(2/1-12/8)	714,216,064	561,225,291	-152,990,773	-21.42%

NO. OF TRANSACTIONS

	2019	2020	NET CHANGE	CHANGE (%)
Daily	1,471	2,271	800	54.38%
Cumulative(4/8-12/8)	13,535	15,856	2,321	17.15%
Cumulative(2/1-12/8)	318,008	222,265	-95,743	-30.11%

SOME FINANCIAL RATIOS FOR THE ASE (12/8/2020)

SECTOR	P/E	P/BV	DIVIDEND YIELD (%)	TURNOVER (%)
FINANCIAL	9.135	0.741	0.170	0.103
SERVICES	11.910	0.982	5.327	0.080
INDUSTRY	15.511	1.266	3.394	0.197
OVERALL	9.814	0.861	1.814	0.110

STOCK PRICE INDEX WEIGHTED BY FREE FLOAT MARKET CAPITALIZATION (1999=1000)

	TUESDAY 11/08/2020	WEDNESDAY 12/08/2020	% CHANGE	
			DAY BEFORE	YTD
GENERAL	1574.8	1572.2	-0.17%	-13.39%
FINANCIAL	2094.8	2085.3	-0.45%	-14.88%
SERVICES	1107.7	1111.2	0.31%	-14.06%
INDUSTRY	1825.1	1827.9	0.15%	-1.56%

STOCK PRICE INDEX WEIGHTED BY FREE FLOAT MARKET CAPITALIZATION ASE20 (2014=1000)

	771.1	769.0	-0.27%	-13.69%
--	-------	-------	--------	---------

STOCK PRICE INDEX WEIGHTED BY MARKET CAPITALIZATION (1991=1000)

	TUESDAY 11/08/2020	WEDNESDAY 12/08/2020	% CHANGE	
			DAY BEFORE	YTD
GENERAL	2905.0	2897.0	-0.28%	-17.55%
BANKS	5453.2	5424.8	-0.52%	-23.55%
INSURANCE	1301.9	1305.1	0.25%	1.77%
SERVICES	665.1	659.4	-0.86%	-10.38%
INDUSTRY	2369.5	2381.7	0.51%	-8.86%

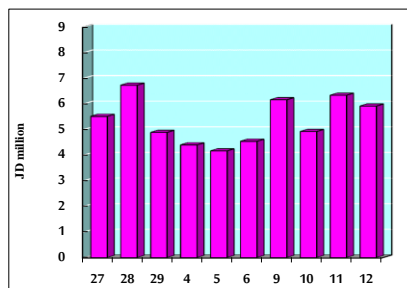
STOCK PRICE MARKET INDEX WEIGHTED BY FREE FLOAT MARKET CAP. (2012=1000)

	TUESDAY 11/08/2020	WEDNESDAY 12/08/2020	% CHANGE	
			DAY BEFORE	YTD
FIRST MARKET	828.2	826.9	-0.17%	-13.49%
SECOND MARKET	782.5	779.2	-0.41%	-6.80%

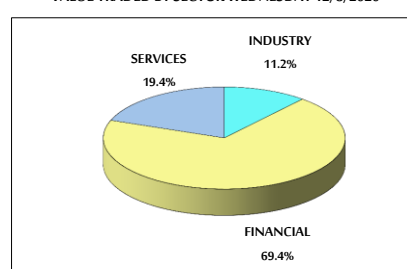
MARKET CAPITALIZATION (JD)

	12,319,059,521	12,286,756,943	-0.26%	-17.62%
--	----------------	----------------	--------	---------

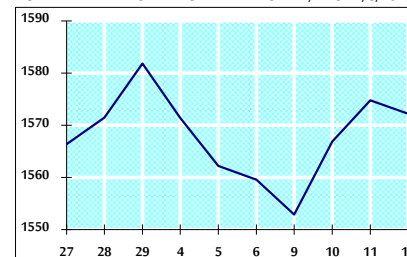
VALUE TRADED FROM 27/7 TO 12/8/2020



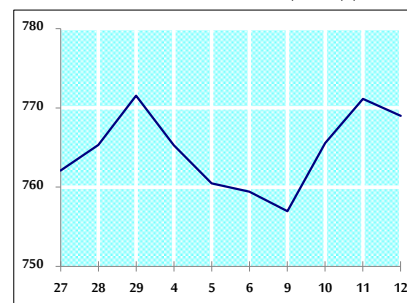
VALUE TRADED BY SECTOR WEDNESDAY 12/8/2020



GENERAL FREE FLOAT PRICE INDEX FROM 27/7 TO 12/8/2020



ASE20 FREE FLOAT PRICE INDEX FROM 27/7 TO 12/8/2020



GENERAL PRICE INDEX FROM 27/7 TO 12/8/2020

