

Daily Summary for Amman Stock Exchange

VALUE TRADED (JD)

	2019	2020	NET CHANGE	CHANGE (%)
Daily	4,410,326	6,330,924	1,920,598	43.55%
Cumulative(4/8-11/8)	23,649,731	30,491,280	6,841,549	28.93%
Cumulative(2/1-11/8)	841,458,962	547,598,434	-293,860,528	-34.92%

NO. OF SHARES TRADED

	2019	2020	NET CHANGE	CHANGE (%)
Daily	3,553,605	7,063,666	3,510,061	98.77%
Cumulative(4/8-11/8)	22,666,576	35,082,900	12,416,324	54.78%
Cumulative(2/1-11/8)	711,453,314	554,249,324	-157,203,990	-22.10%

NO. OF TRANSACTIONS

	2019	2020	NET CHANGE	CHANGE (%)
Daily	2,058	2,167	109	5.30%
Cumulative(4/8-11/8)	12,064	13,585	1,521	12.61%
Cumulative(2/1-11/8)	316,537	219,994	-96,543	-30.50%

SOME FINANCIAL RATIOS FOR THE ASE (11/8/2020)

SECTOR	P/E	P/BV	DIVIDEND YIELD (%)	TURNOVER (%)
FINANCIAL	9.178	0.745	0.169	0.096
SERVICES	11.968	0.987	5.301	0.094
INDUSTRY	15.456	1.262	3.406	0.219
OVERALL	9.841	0.863	1.809	0.111

STOCK PRICE INDEX WEIGHTED BY FREE FLOAT MARKET CAPITALIZATION (1999=1000)

	MONDAY 10/08/2020	TUESDAY 11/08/2020	% CHANGE	
			DAY BEFORE	YTD
GENERAL	1566.9	1574.8	0.51%	-13.24%
FINANCIAL	2091.7	2094.8	0.15%	-14.50%
SERVICES	1091.7	1107.7	1.47%	-14.33%
INDUSTRY	1819.2	1825.1	0.32%	-1.72%

STOCK PRICE INDEX WEIGHTED BY FREE FLOAT MARKET CAPITALIZATION ASE20 (2014=1000)

	765.5	771.1	0.73%	-13.45%
--	-------	-------	-------	---------

STOCK PRICE INDEX WEIGHTED BY MARKET CAPITALIZATION (1991=1000)

	MONDAY 10/08/2020	TUESDAY 11/08/2020	% CHANGE	
			DAY BEFORE	YTD
GENERAL	2895.6	2905.0	0.33%	-17.32%
BANKS	5452.8	5453.2	0.01%	-23.15%
INSURANCE	1304.2	1301.9	-0.18%	1.51%
SERVICES	664.5	665.1	0.10%	-9.60%
INDUSTRY	2344.0	2369.5	1.08%	-9.33%

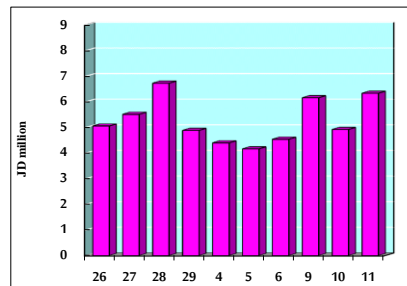
STOCK PRICE MARKET INDEX WEIGHTED BY FREE FLOAT MARKET CAP. (2012=1000)

	MONDAY 10/08/2020	TUESDAY 11/08/2020	% CHANGE	
			DAY BEFORE	YTD
FIRST MARKET	822.9	828.2	0.65%	-13.35%
SECOND MARKET	784.3	782.5	-0.24%	-6.41%

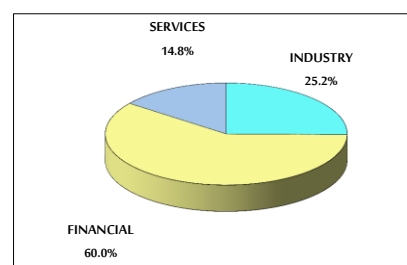
MARKET CAPITALIZATION (JD)

	12,282,429,943	12,319,059,521	0.30%	-17.40%
--	----------------	----------------	-------	---------

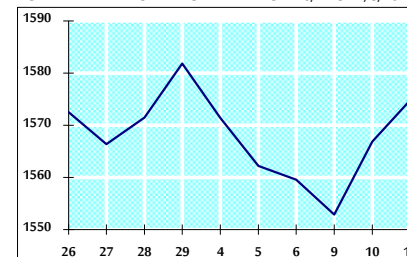
VALUE TRADED FROM 26/7 TO 11/8/2020



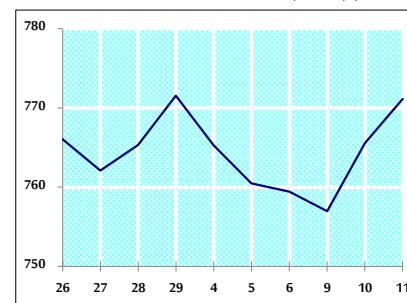
VALUE TRADED BY SECTOR TUESDAY 11/8/2020



GENERAL FREE FLOAT PRICE INDEX FROM 26/7 TO 11/8/2020



ASE20 FREE FLOAT PRICE INDEX FROM 26/7 TO 11/8/2020



GENERAL PRICE INDEX FROM 26/7 TO 11/8/2020

