

Daily Summary for Amman Stock Exchange

VALUE TRADED (JD)

	2019	2020	NET CHANGE	CHANGE (%)
Daily	4,897,695	7,033,857	2,136,162	43.62%
Cumulative(4/8-24/8)	70,152,728	71,774,587	1,621,859	2.31%
Cumulative(2/1-24/8)	887,961,959	588,881,741	-299,080,218	-33.68%

NO. OF SHARES TRADED

	2019	2020	NET CHANGE	CHANGE (%)
Daily	4,744,809	8,881,068	4,136,259	87.17%
Cumulative(4/8-24/8)	58,778,533	83,699,312	24,920,779	42.40%
Cumulative(2/1-24/8)	747,565,271	602,865,736	-144,699,535	-19.36%

NO. OF TRANSACTIONS

	2019	2020	NET CHANGE	CHANGE (%)
Daily	2,182	2,727	545	24.98%
Cumulative(4/8-24/8)	27,634	30,384	2,750	9.95%
Cumulative(2/1-24/8)	332,107	236,793	-95,314	-28.70%

SOME FINANCIAL RATIOS FOR THE ASE (24/8/2020)

SECTOR	P/E	P/BV	DIVIDEND YIELD (%)	TURNOVER (%)
FINANCIAL	9.227	0.749	0.168	0.086
SERVICES	11.828	0.976	5.409	0.040
INDUSTRY	15.633	1.276	3.368	0.583
OVERALL	9.885	0.867	1.808	0.140

STOCK PRICE INDEX WEIGHTED BY FREE FLOAT MARKET CAPITALIZATION (1999=1000)

	SUNDAY 23/08/2020	MONDAY 24/08/2020	% CHANGE	
			DAY BEFORE	YTD
GENERAL	1571.9	1577.5	0.36%	-13.10%
FINANCIAL	2094.0	2104.8	0.51%	-14.09%
SERVICES	1099.8	1100.3	0.05%	-14.90%
INDUSTRY	1827.0	1830.8	0.21%	-1.41%

STOCK PRICE INDEX WEIGHTED BY FREE FLOAT MARKET CAPITALIZATION ASE20 (2014=1000)

	769.2	772.7	0.45%	-13.28%
--	-------	-------	-------	---------

STOCK PRICE INDEX WEIGHTED BY MARKET CAPITALIZATION (1991=1000)

	SUNDAY 23/08/2020	MONDAY 24/08/2020	% CHANGE	
			DAY BEFORE	YTD
GENERAL	2905.6	2918.1	0.43%	-16.95%
BANKS	5448.2	5487.3	0.72%	-22.67%
INSURANCE	1292.0	1290.3	-0.13%	0.61%
SERVICES	658.3	659.9	0.23%	-10.31%
INDUSTRY	2389.1	2389.2	0.01%	-8.57%

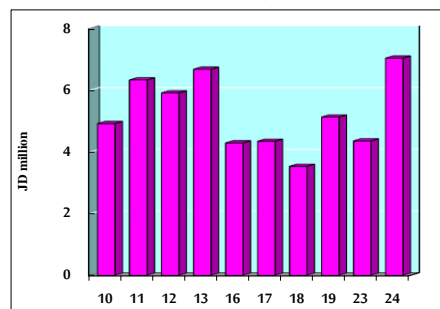
STOCK PRICE MARKET INDEX WEIGHTED BY FREE FLOAT MARKET CAP. (2012=1000)

	SUNDAY 23/08/2020	MONDAY 24/08/2020	% CHANGE	
			DAY BEFORE	YTD
FIRST MARKET	826.7	830.3	0.43%	-13.13%
SECOND MARKET	778.7	781.0	0.29%	-6.58%

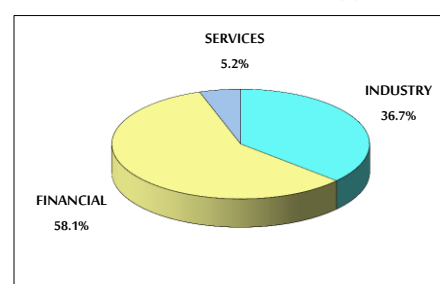
MARKET CAPITALIZATION (JD)

	12,320,734,224	12,371,570,958	0.41%	-17.05%
--	----------------	----------------	-------	---------

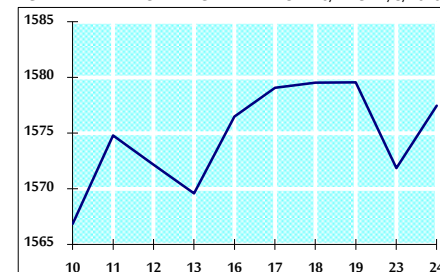
VALUE TRADED FROM 10/7 TO 24/8/2020



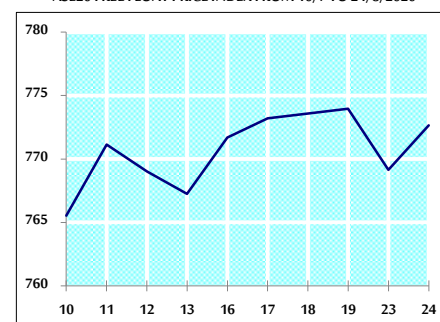
VALUE TRADED BY SECTOR MONDAY 24/8/2020



GENERAL FREE FLOAT PRICE INDEX FROM 10/7 TO 24/8/2020



ASE20 FREE FLOAT PRICE INDEX FROM 10/7 TO 24/8/2020



GENERAL PRICE INDEX FROM 10/7 TO 24/8/2020

