

Daily Summary for Amman Stock Exchange

VALUE TRADED (JD)

	2019	2020	NET CHANGE	CHANGE (%)
Daily	3,539,719	4,159,380	619,661	17.51%
Cumulative(4/8-5/8)	8,438,922	8,553,921	114,999	1.36%
Cumulative(2/1-5/8)	826,248,153	525,661,075	-300,587,078	-36.38%

NO. OF SHARES TRADED

	2019	2020	NET CHANGE	CHANGE (%)
Daily	3,384,473	5,685,575	2,301,102	67.99%
Cumulative(4/8-5/8)	8,774,266	9,903,642	1,129,376	12.87%
Cumulative(2/1-5/8)	697,561,004	529,070,066	-168,490,938	-24.15%

NO. OF TRANSACTIONS

	2019	2020	NET CHANGE	CHANGE (%)
Daily	1,911	2,437	526	27.52%
Cumulative(4/8-5/8)	4,376	4,824	448	10.24%
Cumulative(2/1-5/8)	308,849	211,233	-97,616	-31.61%

SOME FINANCIAL RATIOS FOR THE ASE (5/8/2020)

SECTOR	P/E	P/BV	DIVIDEND YIELD (%)	TURNOVER (%)
FINANCIAL	9.149	0.742	0.170	0.069
SERVICES	11.570	0.954	5.138	0.110
INDUSTRY	15.028	1.227	3.503	0.131
OVERALL	9.712	0.849	1.806	0.086

STOCK PRICE INDEX WEIGHTED BY FREE FLOAT MARKET CAPITALIZATION (1999=1000)

	TUESDAY 04/08/2020	WEDNESDAY 05/08/2020	% CHANGE	
			DAY BEFORE	YTD
GENERAL	1571.4	1562.2	-0.59%	-13.94%
FINANCIAL	2093.2	2090.9	-0.11%	-14.65%
SERVICES	1105.3	1086.2	-1.73%	-15.99%
INDUSTRY	1807.5	1807.8	0.02%	-2.65%

STOCK PRICE INDEX WEIGHTED BY FREE FLOAT MARKET CAPITALIZATION ASE20 (2014=1000)

	765.3	760.5	-0.63%	-14.65%
--	-------	-------	--------	---------

STOCK PRICE INDEX WEIGHTED BY MARKET CAPITALIZATION (1991=1000)

	TUESDAY 04/08/2020	WEDNESDAY 05/08/2020	% CHANGE	
			DAY BEFORE	YTD
GENERAL	2875.3	2873.0	-0.08%	-18.23%
BANKS	5401.9	5421.2	0.36%	-23.60%
INSURANCE	1298.3	1297.5	-0.06%	1.17%
SERVICES	670.8	667.0	-0.56%	-9.34%
INDUSTRY	2315.9	2300.6	-0.66%	-11.96%

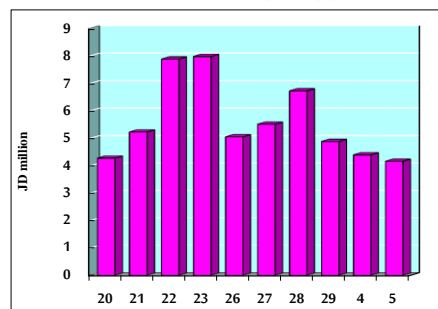
STOCK PRICE MARKET INDEX WEIGHTED BY FREE FLOAT MARKET CAP. (2012=1000)

	TUESDAY 04/08/2020	WEDNESDAY 05/08/2020	% CHANGE	
			DAY BEFORE	YTD
FIRST MARKET	823.3	818.2	-0.62%	-14.40%
SECOND MARKET	799.0	794.1	-0.62%	-5.02%

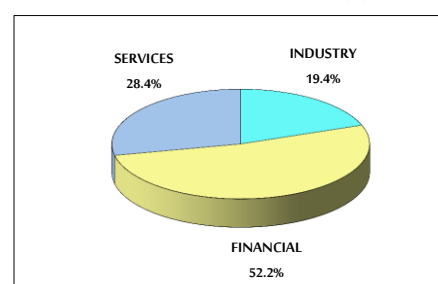
MARKET CAPITALIZATION (JD)

	12,263,322,278	12,267,992,240	0.04%	-17.75%
--	----------------	----------------	-------	---------

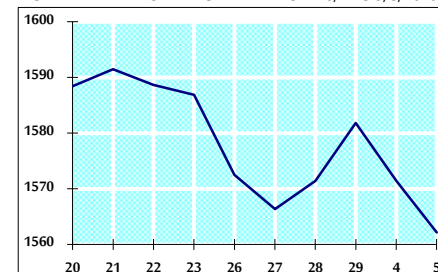
VALUE TRADED FROM 20/7 TO 5/8/2020



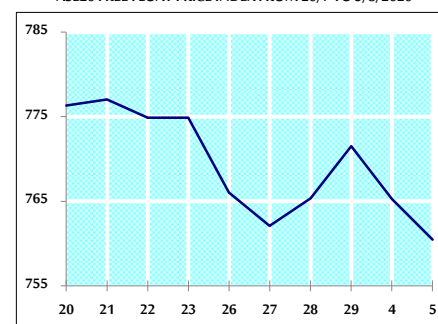
VALUE TRADED BY SECTOR WEDNESDAY 5/8/2020



GENERAL FREE FLOAT PRICE INDEX FROM 20/7 TO 5/8/2020



ASE20 FREE FLOAT PRICE INDEX FROM 20/7 TO 5/8/2020



GENERAL PRICE INDEX FROM 20/7 TO 5/8/2020

