

Daily Summary for Amman Stock Exchange

VALUE TRADED (JD)

	2019	2020	NET CHANGE	CHANGE (%)
Daily	4,899,203	4,394,541	-504,662	-10.30%
Cumulative(4/8-4/8)	4,899,203	4,394,541	-504,662	-10.30%
Cumulative(2/1-4/8)	822,708,434	521,501,695	-301,206,739	-36.61%

NO. OF SHARES TRADED

	2019	2020	NET CHANGE	CHANGE (%)
Daily	5,389,793	4,218,067	-1,171,726	-21.74%
Cumulative(4/8-4/8)	5,389,793	4,218,067	-1,171,726	-21.74%
Cumulative(2/1-4/8)	694,176,531	523,384,491	-170,792,040	-24.60%

NO. OF TRANSACTIONS

	2019	2020	NET CHANGE	CHANGE (%)
Daily	2,465	2,387	-78	-3.16%
Cumulative(4/8-4/8)	2,465	2,387	-78	-3.16%
Cumulative(2/1-4/8)	306,938	208,796	-98,142	-31.97%

SOME FINANCIAL RATIOS FOR THE ASE (4/8/2020)

SECTOR	P/E	P/BV	DIVIDEND YIELD (%)	TURNOVER (%)
FINANCIAL	9.124	0.740	0.170	0.057
SERVICES	11.671	0.963	5.094	0.058
INDUSTRY	15.020	1.226	3.505	0.109
OVERALL	9.719	0.850	1.804	0.064

STOCK PRICE INDEX WEIGHTED BY FREE FLOAT MARKET CAPITALIZATION (1999=1000)

	WEDNESDAY 29/07/2020	TUESDAY 04/08/2020	% CHANGE	
			DAY BEFORE	YTD
GENERAL	1581.8	1571.4	-0.66%	-13.43%
FINANCIAL	2103.9	2093.2	-0.51%	-14.56%
SERVICES	1122.7	1105.3	-1.54%	-14.52%
INDUSTRY	1801.9	1807.5	0.31%	-2.67%

STOCK PRICE INDEX WEIGHTED BY FREE FLOAT MARKET CAPITALIZATION ASE20 (2014=1000)

	771.5	765.3	-0.81%	-14.11%
--	-------	-------	--------	---------

STOCK PRICE INDEX WEIGHTED BY MARKET CAPITALIZATION (1991=1000)

	WEDNESDAY 29/07/2020	TUESDAY 04/08/2020	% CHANGE	
			DAY BEFORE	YTD
GENERAL	2892.2	2875.3	-0.58%	-18.17%
BANKS	5453.5	5401.9	-0.95%	-23.87%
INSURANCE	1303.1	1298.3	-0.37%	1.23%
SERVICES	673.5	670.8	-0.40%	-8.83%
INDUSTRY	2314.9	2315.9	0.05%	-11.37%

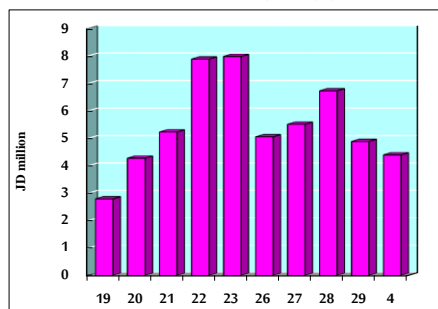
STOCK PRICE MARKET INDEX WEIGHTED BY FREE FLOAT MARKET CAP. (2012=1000)

	WEDNESDAY 29/07/2020	TUESDAY 04/08/2020	% CHANGE	
			DAY BEFORE	YTD
FIRST MARKET	829.9	823.3	-0.79%	-13.86%
SECOND MARKET	796.8	799.0	0.28%	-4.43%

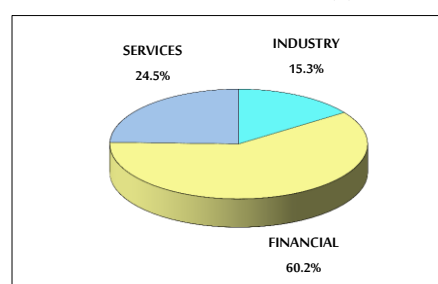
MARKET CAPITALIZATION (JD)

	12,329,753,390	12,263,322,278	-0.54%	-17.78%
--	----------------	----------------	--------	---------

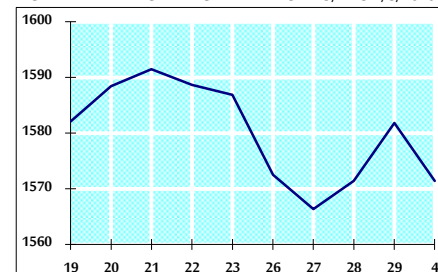
VALUE TRADED FROM 19/7 TO 4/8/2020



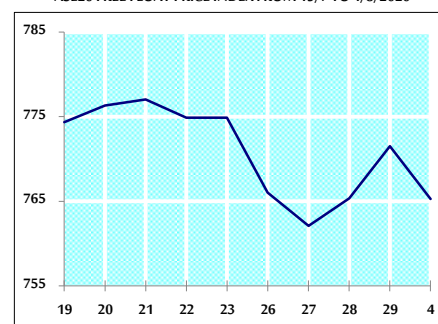
VALUE TRADED BY SECTOR TUESDAY 4/8/2020



GENERAL FREE FLOAT PRICE INDEX FROM 19/7 TO 4/8/2020



ASE20 FREE FLOAT PRICE INDEX FROM 19/7 TO 4/8/2020



GENERAL PRICE INDEX FROM 19/7 TO 4/8/2020

