

Daily Summary for Amman Stock Exchange

VALUE TRADED (JD)

	2019	2020	NET CHANGE	CHANGE (%)
Daily	4,905,474	5,507,858	602,384	12.28%
Cumulative(1/7-27/7)	119,152,726	89,892,175	-29,260,551	-24.56%
Cumulative(2/1-27/7)	787,218,435	505,501,487	-281,716,948	-35.79%

NO. OF SHARES TRADED

	2019	2020	NET CHANGE	CHANGE (%)
Daily	4,308,834	5,152,919	844,085	19.59%
Cumulative(1/7-27/7)	109,650,216	102,883,114	-6,767,102	-6.17%
Cumulative(2/1-27/7)	643,904,892	506,210,205	-137,694,687	-21.38%

NO. OF TRANSACTIONS

	2019	2020	NET CHANGE	CHANGE (%)
Daily	2,356	2,498	142	6.03%
Cumulative(1/7-27/7)	51,642	38,177	-13,465	-26.07%
Cumulative(2/1-27/7)	295,077	200,815	-94,262	-31.94%

SOME FINANCIAL RATIOS FOR THE ASE (27/7/2020)

SECTOR	P/E	P/BV	DIVIDEND YIELD (%)	TURNOVER (%)
FINANCIAL	9.012	0.731	0.172	0.076
SERVICES	12.401	0.963	4.983	0.062
INDUSTRY	14.950	1.220	3.521	0.114
OVERALL	9.636	0.843	1.820	0.078

STOCK PRICE INDEX WEIGHTED BY FREE FLOAT MARKET CAPITALIZATION (1999=1000)

	SUNDAY 26/07/2020	MONDAY 27/07/2020	% CHANGE	
			DAY BEFORE	YTD
GENERAL	1572.5	1566.4	-0.39%	-13.71%
FINANCIAL	2071.1	2065.6	-0.27%	-15.69%
SERVICES	1135.6	1128.2	-0.65%	-12.75%
INDUSTRY	1808.9	1804.7	-0.23%	-2.82%

STOCK PRICE INDEX WEIGHTED BY FREE FLOAT MARKET CAPITALIZATION ASE20 (2014=1000)

	766.0	762.1	-0.51%	-14.46%
--	-------	-------	--------	---------

STOCK PRICE INDEX WEIGHTED BY MARKET CAPITALIZATION (1991=1000)

	SUNDAY 26/07/2020	MONDAY 27/07/2020	% CHANGE	
			DAY BEFORE	YTD
GENERAL	2857.9	2850.6	-0.25%	-18.87%
BANKS	5329.7	5325.4	-0.08%	-24.95%
INSURANCE	1302.2	1298.5	-0.28%	1.25%
SERVICES	670.2	668.5	-0.25%	-9.14%
INDUSTRY	2327.8	2313.8	-0.60%	-11.46%

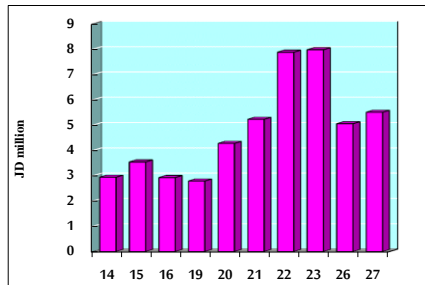
STOCK PRICE MARKET INDEX WEIGHTED BY FREE FLOAT MARKET CAP. (2012=1000)

	SUNDAY 26/07/2020	MONDAY 27/07/2020	% CHANGE	
			DAY BEFORE	YTD
FIRST MARKET	824.9	821.0	-0.48%	-14.11%
SECOND MARKET	792.5	792.8	0.04%	-5.17%

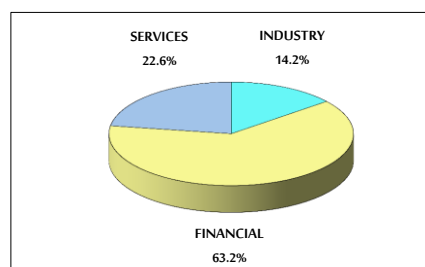
MARKET CAPITALIZATION (JD)

	12,195,123,425	12,166,080,491	-0.24%	-18.43%
--	----------------	----------------	--------	---------

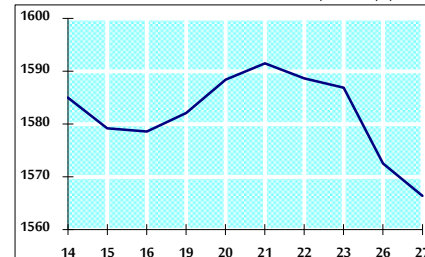
VALUE TRADED FROM 14/7 TO 27/7/2020



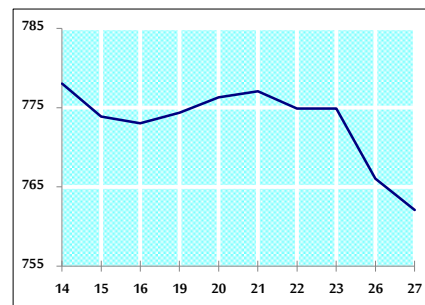
VALUE TRADED BY SECTOR MONDAY 27/7/2020



GENERAL FREE FLOAT PRICE INDEX FROM 14/7 TO 27/7/2020



ASE20 FREE FLOAT PRICE INDEX FROM 14/7 TO 27/7/2020



GENERAL PRICE INDEX FROM 14/7 TO 27/7/2020

