

Daily Summary for Amman Stock Exchange

VALUE TRADED (JD)

	2019	2020	NET CHANGE	CHANGE (%)
Daily	3,811,717	4,628,316	816,599	21.42%
Cumulative(1/6-4/6)	13,572,182	17,002,481	3,430,299	25.27%
Cumulative(2/1-4/6)	584,457,016	332,634,950	-251,822,066	-43.09%

NO. OF SHARES TRADED

	2019	2020	NET CHANGE	CHANGE (%)
Daily	4,178,173	7,324,441	3,146,268	75.30%
Cumulative(1/6-4/6)	15,042,567	22,142,019	7,099,452	47.20%
Cumulative(2/1-4/6)	456,473,039	311,204,233	-145,268,806	-31.82%

NO. OF TRANSACTIONS

	2019	2020	NET CHANGE	CHANGE (%)
Daily	2,378	1,765	-613	-25.78%
Cumulative(1/6-4/6)	7,734	7,676	-58	-0.75%
Cumulative(2/1-4/6)	207,277	132,100	-75,177	-36.27%

SOME FINANCIAL RATIOS FOR THE ASE (4/6/2020)

SECTOR	P/E	P/BV	DIVIDEND YIELD (%)	TURNOVER (%)
FINANCIAL	9.654	0.792	0.243	0.088
SERVICES	12.726	0.988	4.717	0.062
INDUSTRY	15.223	1.264	0.637	0.310
OVERALL	10.107	0.900	0.970	0.110

STOCK PRICE INDEX WEIGHTED BY FREE FLOAT MARKET CAPITALIZATION (1999=1000)

	WEDNESDAY 03/06/2020	THURSDAY 04/06/2020	% CHANGE	
			DAY BEFORE	YTD
GENERAL	1641.2	1654.0	0.78%	-8.88%
FINANCIAL	2168.5	2192.1	1.09%	-10.53%
SERVICES	1187.5	1191.9	0.37%	-7.82%
INDUSTRY	1819.3	1818.8	-0.03%	-2.05%

STOCK PRICE INDEX WEIGHTED BY FREE FLOAT MARKET CAPITALIZATION ASE20 (2014=1000)

	807.0	815.1	0.99%	-8.52%
--	-------	-------	-------	--------

STOCK PRICE INDEX WEIGHTED BY MARKET CAPITALIZATION (1991=1000)

	WEDNESDAY 03/06/2020	THURSDAY 04/06/2020	% CHANGE	
			DAY BEFORE	YTD
GENERAL	3029.0	3042.0	0.43%	-13.43%
BANKS	5838.3	5884.9	0.80%	-17.06%
INSURANCE	1336.0	1342.0	0.45%	4.64%
SERVICES	679.5	677.5	-0.29%	-7.91%
INDUSTRY	2373.1	2375.0	0.08%	-9.11%

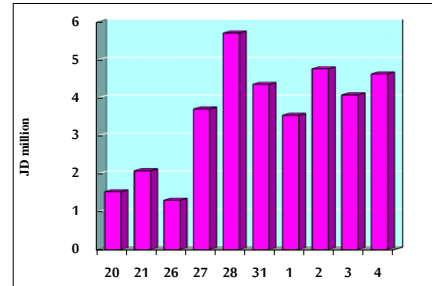
STOCK PRICE MARKET INDEX WEIGHTED BY FREE FLOAT MARKET CAP. (2012=1000)

	WEDNESDAY 03/06/2020	THURSDAY 04/06/2020	% CHANGE	
			DAY BEFORE	YTD
FIRST MARKET	869.8	878.0	0.94%	-8.14%
SECOND MARKET	758.1	760.9	0.37%	-8.99%

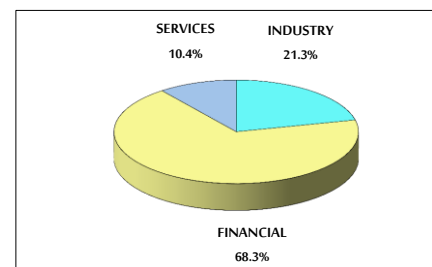
MARKET CAPITALIZATION (JD)

	12,915,535,744	12,963,866,759	0.37%	-13.08%
--	----------------	----------------	-------	---------

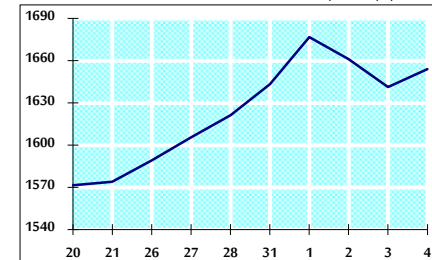
VALUE TRADED FROM 20/5 TO 4/6/2020



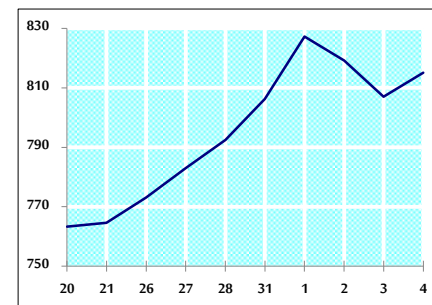
VALUE TRADED BY SECTOR THURSDAY 4/6/2020



GENERAL FREE FLOAT PRICE INDEX FROM 20/5 TO 4/6/2020



ASE20 FREE FLOAT PRICE INDEX FROM 20/5 TO 4/6/2020



GENERAL PRICE INDEX FROM 20/5 TO 4/6/2020

