

Daily Summary for Amman Stock Exchange

VALUE TRADED (JD)

	2019	2020	NET CHANGE	CHANGE (%)
Daily	3,634,306	4,075,510	441,204	12.14%
Cumulative(1/6-3/6)	9,760,465	12,374,165	2,613,700	26.78%
Cumulative(2/1-3/6)	580,645,299	328,006,634	-252,638,665	-43.51%

NO. OF SHARES TRADED

	2019	2020	NET CHANGE	CHANGE (%)
Daily	4,079,712	4,990,948	911,236	22.34%
Cumulative(1/6-3/6)	10,864,394	14,817,578	3,953,184	36.39%
Cumulative(2/1-3/6)	452,294,866	303,879,792	-148,415,074	-32.81%

NO. OF TRANSACTIONS

	2019	2020	NET CHANGE	CHANGE (%)
Daily	2,020	1,680	-340	-16.83%
Cumulative(1/6-3/6)	5,356	5,911	555	10.36%
Cumulative(2/1-3/6)	204,899	130,335	-74,564	-36.39%

SOME FINANCIAL RATIOS FOR THE ASE (3/6/2020)

SECTOR	P/E	P/BV	DIVIDEND YIELD (%)	TURNOVER (%)
FINANCIAL	9.575	0.786	0.258	0.031
SERVICES	12.545	0.991	4.780	0.148
INDUSTRY	15.205	1.265	0.386	0.153
OVERALL	10.030	0.896	0.917	0.075

STOCK PRICE INDEX WEIGHTED BY FREE FLOAT MARKET CAPITALIZATION (1999=1000)

	TUESDAY 02/06/2020	WEDNESDAY 03/06/2020	% CHANGE	
			DAY BEFORE	YTD
GENERAL	1661.2	1641.2	-1.20%	-9.59%
FINANCIAL	2195.1	2168.5	-1.21%	-11.49%
SERVICES	1203.3	1187.5	-1.31%	-8.16%
INDUSTRY	1825.8	1819.3	-0.36%	-2.03%

STOCK PRICE INDEX WEIGHTED BY FREE FLOAT MARKET CAPITALIZATION ASE20 (2014=1000)

	819.2	807.0	-1.49%	-9.42%
--	-------	-------	--------	--------

STOCK PRICE INDEX WEIGHTED BY MARKET CAPITALIZATION (1991=1000)

	TUESDAY 02/06/2020	WEDNESDAY 03/06/2020	% CHANGE	
			DAY BEFORE	YTD
GENERAL	3050.8	3029.0	-0.72%	-13.80%
BANKS	5869.2	5838.3	-0.53%	-17.72%
INSURANCE	1338.6	1336.0	-0.19%	4.17%
SERVICES	681.9	679.5	-0.35%	-7.64%
INDUSTRY	2404.7	2373.1	-1.31%	-9.19%

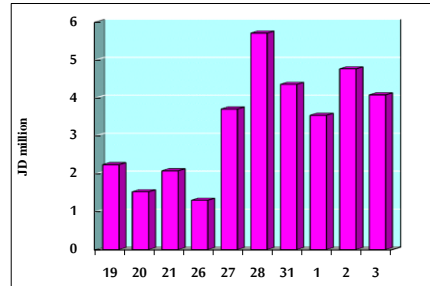
STOCK PRICE MARKET INDEX WEIGHTED BY FREE FLOAT MARKET CAP. (2012=1000)

	TUESDAY 02/06/2020	WEDNESDAY 03/06/2020	% CHANGE	
			DAY BEFORE	YTD
FIRST MARKET	882.0	869.8	-1.38%	-9.00%
SECOND MARKET	757.9	758.1	0.02%	-9.32%

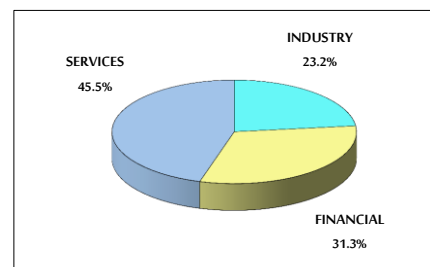
MARKET CAPITALIZATION (JD)

	13,000,213,477	12,915,535,744	-0.65%	-13.40%
--	----------------	----------------	--------	---------

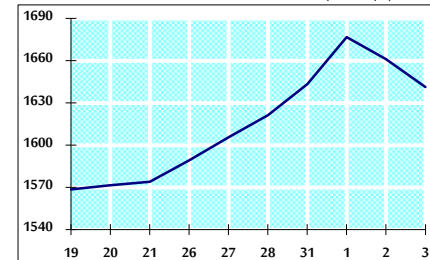
VALUE TRADED FROM 19/5 TO 3/6/2020



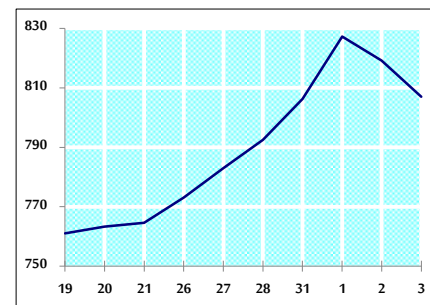
VALUE TRADED BY SECTOR WEDNESDAY 3/6/2020



GENERAL FREE FLOAT PRICE INDEX FROM 19/5 TO 3/6/2020



ASE20 FREE FLOAT PRICE INDEX FROM 19/5 TO 3/6/2020



GENERAL PRICE INDEX FROM 19/5 TO 3/6/2020

