

Daily Summary for Amman Stock Exchange

VALUE TRADED (JD)

	2019	2020	NET CHANGE	CHANGE (%)
Daily	2,638,785	4,761,097	2,122,312	80.43%
Cumulative(1/6-2/6)	6,126,159	8,298,655	2,172,496	35.46%
Cumulative(2/1-2/6)	577,010,993	323,931,124	-253,079,869	-43.86%

NO. OF SHARES TRADED

	2019	2020	NET CHANGE	CHANGE (%)
Daily	2,787,556	4,960,600	2,173,044	77.96%
Cumulative(1/6-2/6)	6,784,682	9,826,630	3,041,948	44.84%
Cumulative(2/1-2/6)	448,215,154	298,888,844	-149,326,310	-33.32%

NO. OF TRANSACTIONS

	2019	2020	NET CHANGE	CHANGE (%)
Daily	1,693	2,229	536	31.66%
Cumulative(1/6-2/6)	3,336	4,231	895	26.83%
Cumulative(2/1-2/6)	202,879	128,655	-74,224	-36.59%

SOME FINANCIAL RATIOS FOR THE ASE (2/6/2020)

SECTOR	P/E	P/BV	DIVIDEND YIELD (%)	TURNOVER (%)
FINANCIAL	9.619	0.790	0.257	0.055
SERVICES	12.719	0.999	4.100	0.063
INDUSTRY	14.781	1.273	0.382	0.191
OVERALL	10.042	0.902	0.800	0.074

STOCK PRICE INDEX WEIGHTED BY FREE FLOAT MARKET CAPITALIZATION (1999=1000)

	MONDAY 01/06/2020	TUESDAY 02/06/2020	% CHANGE	
			DAY BEFORE	YTD
GENERAL	1676.8	1661.2	-0.93%	-8.49%
FINANCIAL	2211.6	2195.1	-0.75%	-10.40%
SERVICES	1223.5	1203.3	-1.66%	-6.94%
INDUSTRY	1831.1	1825.8	-0.29%	-1.68%

STOCK PRICE INDEX WEIGHTED BY FREE FLOAT MARKET CAPITALIZATION ASE20 (2014=1000)

	827.3	819.2	-0.97%	-8.05%
--	-------	-------	--------	--------

STOCK PRICE INDEX WEIGHTED BY MARKET CAPITALIZATION (1991=1000)

	MONDAY 01/06/2020	TUESDAY 02/06/2020	% CHANGE	
			DAY BEFORE	YTD
GENERAL	3063.6	3050.8	-0.42%	-13.18%
BANKS	5876.9	5869.2	-0.13%	-17.28%
INSURANCE	1337.8	1338.6	0.06%	4.37%
SERVICES	689.3	681.9	-1.07%	-7.31%
INDUSTRY	2420.1	2404.7	-0.63%	-7.98%

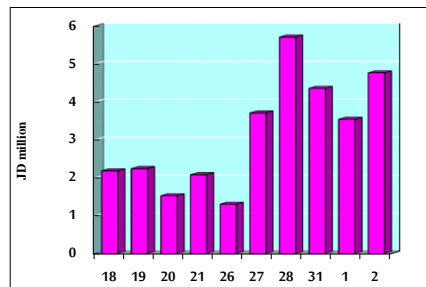
STOCK PRICE MARKET INDEX WEIGHTED BY FREE FLOAT MARKET CAP. (2012=1000)

	MONDAY 01/06/2020	TUESDAY 02/06/2020	% CHANGE	
			DAY BEFORE	YTD
FIRST MARKET	890.2	882.0	-0.92%	-7.73%
SECOND MARKET	763.3	757.9	-0.71%	-9.34%

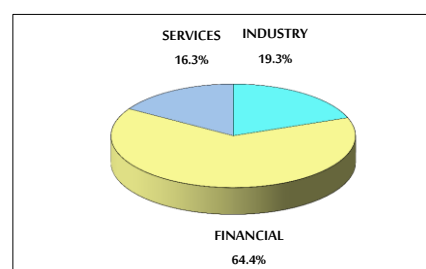
MARKET CAPITALIZATION (JD)

	13,055,062,268	13,000,213,477	-0.42%	-12.84%
--	----------------	----------------	--------	---------

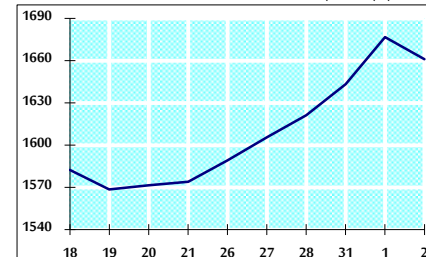
VALUE TRADED FROM 18/5 TO 2/6/2020



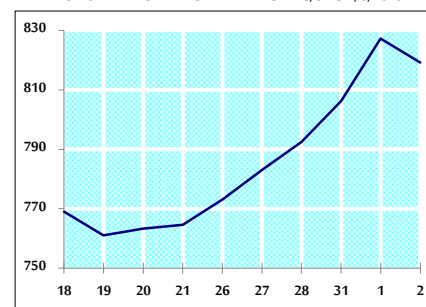
VALUE TRADED BY SECTOR TUESDAY 2/6/2020



GENERAL FREE FLOAT PRICE INDEX FROM 18/5 TO 2/6/2020



ASE20 FREE FLOAT PRICE INDEX FROM 18/5 TO 2/6/2020



GENERAL PRICE INDEX FROM 18/5 TO 2/6/2020

