

Daily Summary for Amman Stock Exchange

VALUE TRADED (JD)

	2019	2020	NET CHANGE	CHANGE (%)
Daily	3,487,374	3,537,558	50,184	1.44%
Cumulative(1/6-1/6)	3,487,374	3,537,558	50,184	1.44%
Cumulative(2/1-1/6)	574,372,208	319,170,027	-255,202,181	-44.43%

NO. OF SHARES TRADED

	2019	2020	NET CHANGE	CHANGE (%)
Daily	3,997,126	4,866,030	868,904	21.74%
Cumulative(1/6-1/6)	3,997,126	4,866,030	868,904	21.74%
Cumulative(2/1-1/6)	445,427,598	293,928,244	-151,499,354	-34.01%

NO. OF TRANSACTIONS

	2019	2020	NET CHANGE	CHANGE (%)
Daily	1,643	2,002	359	21.85%
Cumulative(1/6-1/6)	1,643	2,002	359	21.85%
Cumulative(2/1-1/6)	201,186	126,426	-74,760	-37.16%

SOME FINANCIAL RATIOS FOR THE ASE (1/6/2020)

SECTOR	P/E	P/BV	DIVIDEND YIELD (%)	TURNOVER (%)
FINANCIAL	9.633	0.791	0.257	0.056
SERVICES	12.949	1.015	4.064	0.042
INDUSTRY	14.839	1.278	0.380	0.217
OVERALL	10.088	0.906	0.801	0.073

STOCK PRICE INDEX WEIGHTED BY FREE FLOAT MARKET CAPITALIZATION (1999=1000)

	SUNDAY 31/05/2020	MONDAY 01/06/2020	% CHANGE	
			DAY BEFORE	YTD
GENERAL	1643.3	1676.8	2.04%	-7.62%
FINANCIAL	2160.3	2211.6	2.37%	-9.73%
SERVICES	1202.1	1223.5	1.78%	-5.37%
INDUSTRY	1825.1	1831.1	0.33%	-1.39%

STOCK PRICE INDEX WEIGHTED BY FREE FLOAT MARKET CAPITALIZATION ASE20 (2014=1000)

	806.3	827.3	2.61%	-7.15%
--	-------	-------	-------	--------

STOCK PRICE INDEX WEIGHTED BY MARKET CAPITALIZATION (1991=1000)

	SUNDAY 31/05/2020	MONDAY 01/06/2020	% CHANGE	
			DAY BEFORE	YTD
GENERAL	3012.4	3063.6	1.70%	-12.81%
BANKS	5738.6	5876.9	2.41%	-17.18%
INSURANCE	1336.0	1337.8	0.13%	4.31%
SERVICES	683.5	689.3	0.84%	-6.32%
INDUSTRY	2401.1	2420.1	0.79%	-7.39%

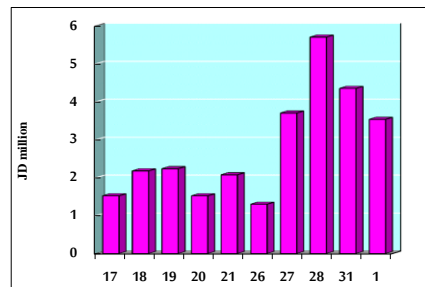
STOCK PRICE MARKET INDEX WEIGHTED BY FREE FLOAT MARKET CAP. (2012=1000)

	SUNDAY 31/05/2020	MONDAY 01/06/2020	% CHANGE	
			DAY BEFORE	YTD
FIRST MARKET	869.5	890.2	2.38%	-6.87%
SECOND MARKET	759.3	763.3	0.53%	-8.70%

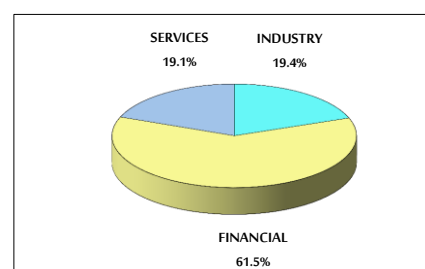
MARKET CAPITALIZATION (JD)

	12,858,289,138	13,055,062,268	1.53%	-12.47%
--	----------------	----------------	-------	---------

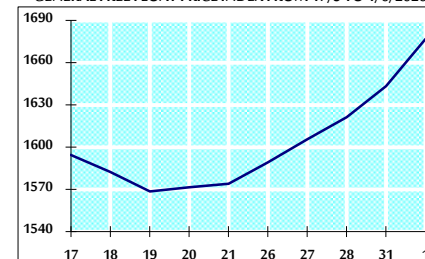
VALUE TRADED FROM 17/5 TO 1/6/2020



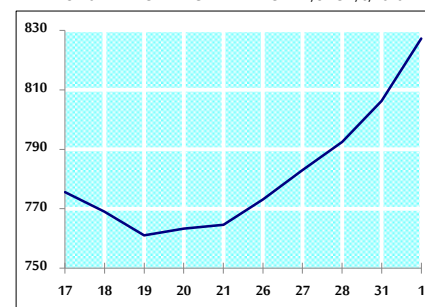
VALUE TRADED BY SECTOR MONDAY 1/6/2020



GENERAL FREE FLOAT PRICE INDEX FROM 17/5 TO 1/6/2020



ASE20 FREE FLOAT PRICE INDEX FROM 17/5 TO 1/6/2020



GENERAL PRICE INDEX FROM 17/5 TO 1/6/2020

