

Daily Summary for Amman Stock Exchange

VALUE TRADED (JD)

	2019	2020	NET CHANGE	CHANGE (%)
Daily	3,541,119	4,185,074	643,955	18.19%
Cumulative(2/2-18/2)	63,657,732	81,950,980	18,293,248	28.74%
Cumulative(2/1-18/2)	154,552,102	186,980,837	32,428,735	20.98%

NO. OF SHARES TRADED

	2019	2020	NET CHANGE	CHANGE (%)
Daily	3,928,745	4,096,052	167,307	4.26%
Cumulative(2/2-18/2)	46,454,762	76,550,054	30,095,292	64.78%
Cumulative(2/1-18/2)	112,203,365	169,648,658	57,445,293	51.20%

NO. OF TRANSACTIONS

	2019	2020	NET CHANGE	CHANGE (%)
Daily	1,793	2,071	278	15.50%
Cumulative(2/2-18/2)	25,769	30,561	4,792	18.60%
Cumulative(2/1-18/2)	61,686	74,715	13,029	21.12%

SOME FINANCIAL RATIOS FOR THE ASE (18/2/2020)

SECTOR	P/E	P/BV	DIVIDEND YIELD (%)	TURNOVER (%)
FINANCIAL	10.694	0.930	4.933	0.050
SERVICES	16.103	1.142	5.373	0.070
INDUSTRY	17.465	1.433	3.710	0.099
OVERALL	11.669	1.064	4.811	0.061

STOCK PRICE INDEX WEIGHTED BY FREE FLOAT MARKET CAPITALIZATION (1999=1000)

	MONDAY 17/02/2020	TUESDAY 18/02/2020	% CHANGE	
			DAY BEFORE	YTD
GENERAL	1858.2	1861.6	0.19%	2.56%
FINANCIAL	2478.7	2480.7	0.08%	1.25%
SERVICES	1338.1	1344.1	0.45%	3.95%
INDUSTRY	1937.5	1938.6	0.06%	4.40%

STOCK PRICE INDEX WEIGHTED BY FREE FLOAT MARKET CAPITALIZATION ASE20 (2014=1000)

	920.7	921.7	0.11%	3.45%
--	-------	-------	-------	-------

STOCK PRICE INDEX WEIGHTED BY MARKET CAPITALIZATION (1991=1000)

	MONDAY 17/02/2020	TUESDAY 18/02/2020	% CHANGE	
			DAY BEFORE	YTD
GENERAL	3528.2	3519.0	-0.26%	0.15%
BANKS	6988.9	6953.5	-0.51%	-2.00%
INSURANCE	1332.0	1334.1	0.16%	4.02%
SERVICES	756.5	761.2	0.62%	3.46%
INDUSTRY	2696.2	2689.5	-0.25%	2.92%

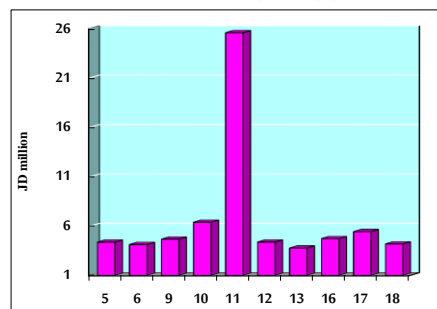
STOCK PRICE MARKET INDEX WEIGHTED BY FREE FLOAT MARKET CAP. (2012=1000)

	MONDAY 17/02/2020	TUESDAY 18/02/2020	% CHANGE	
			DAY BEFORE	YTD
FIRST MARKET	987.0	988.3	0.13%	3.39%
SECOND MARKET	832.9	835.4	0.30%	-0.08%

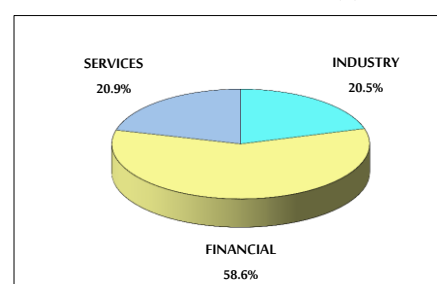
MARKET CAPITALIZATION (JD)

	14,951,143,748	14,914,660,093	-0.24%	0.00%
--	----------------	----------------	--------	-------

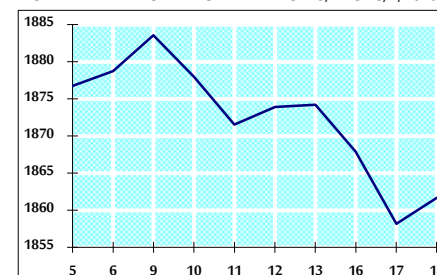
VALUE TRADED FROM 5/2 TO 18/2/2020



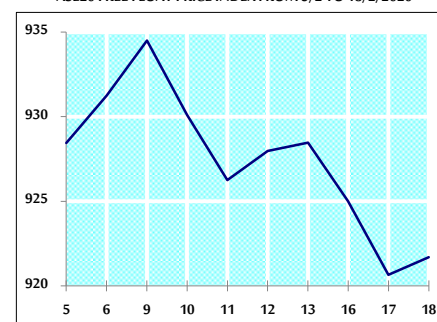
VALUE TRADED BY SECTOR TUESDAY 18/2/2020



GENERAL FREE FLOAT PRICE INDEX FROM 5/2 TO 18/2/2020



ASE20 FREE FLOAT PRICE INDEX FROM 5/2 TO 18/2/2020



GENERAL PRICE INDEX FROM 5/2 TO 18/2/2020

