

Daily Summary for Amman Stock Exchange

VALUE TRADED (JD)

	2019	2020	NET CHANGE	CHANGE (%)
Daily	3,684,240	3,770,402	86,162	2.34%
Cumulative(2/2-13/2)	45,312,053	67,610,281	22,298,228	49.21%
Cumulative(2/1-13/2)	136,206,423	172,640,138	36,433,715	26.75%

NO. OF SHARES TRADED

	2019	2020	NET CHANGE	CHANGE (%)
Daily	3,656,399	3,913,148	256,749	7.02%
Cumulative(2/2-13/2)	34,648,649	62,347,448	27,698,799	79.94%
Cumulative(2/1-13/2)	100,397,252	155,446,052	55,048,800	54.83%

NO. OF TRANSACTIONS

	2019	2020	NET CHANGE	CHANGE (%)
Daily	2,218	2,446	228	10.28%
Cumulative(2/2-13/2)	20,405	23,749	3,344	16.39%
Cumulative(2/1-13/2)	56,322	67,903	11,581	20.56%

SOME FINANCIAL RATIOS FOR THE ASE (13/2/2020)

SECTOR	P/E	P/BV	DIVIDEND YIELD (%)	TURNOVER (%)
FINANCIAL	10.799	0.944	4.934	0.053
SERVICES	16.021	1.141	5.388	0.047
INDUSTRY	17.589	1.444	3.679	0.109
OVERALL	11.752	1.076	4.807	0.059

STOCK PRICE INDEX WEIGHTED BY FREE FLOAT MARKET CAPITALIZATION (1999=1000)

	WEDNESDAY 12/02/2020	THURSDAY 13/02/2020	% CHANGE	
			DAY BEFORE	YTD
GENERAL	1873.9	1874.2	0.02%	3.25%
FINANCIAL	2510.1	2507.9	-0.09%	2.36%
SERVICES	1342.9	1345.6	0.20%	4.06%
INDUSTRY	1940.8	1941.2	0.02%	4.54%

STOCK PRICE INDEX WEIGHTED BY FREE FLOAT MARKET CAPITALIZATION ASE20 (2014=1000)

	928.0	928.5	0.05%	4.21%
--	-------	-------	-------	-------

STOCK PRICE INDEX WEIGHTED BY MARKET CAPITALIZATION (1991=1000)

	WEDNESDAY 12/02/2020	THURSDAY 13/02/2020	% CHANGE	
			DAY BEFORE	YTD
GENERAL	3550.7	3555.2	0.13%	1.18%
BANKS	7058.7	7067.1	0.12%	-0.40%
INSURANCE	1327.7	1329.2	0.11%	3.64%
SERVICES	754.2	756.1	0.26%	2.77%
INDUSTRY	2707.2	2709.4	0.08%	3.68%

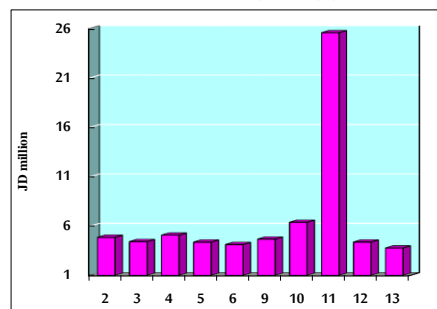
STOCK PRICE MARKET INDEX WEIGHTED BY FREE FLOAT MARKET CAP. (2012=1000)

	WEDNESDAY 12/02/2020	THURSDAY 13/02/2020	% CHANGE	
			DAY BEFORE	YTD
FIRST MARKET	995.4	995.8	0.04%	4.18%
SECOND MARKET	839.4	838.2	-0.14%	0.26%

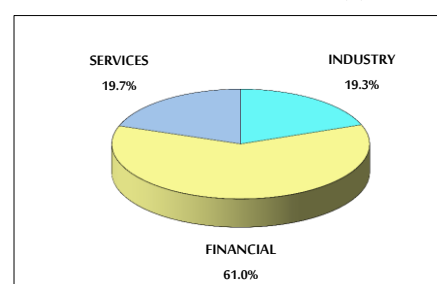
MARKET CAPITALIZATION (JD)

	15,046,904,395	15,064,177,318	0.11%	1.00%
--	----------------	----------------	-------	-------

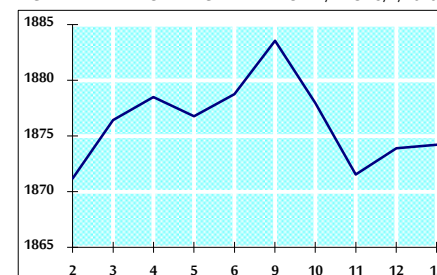
VALUE TRADED FROM 2/2 TO 13/2/2020



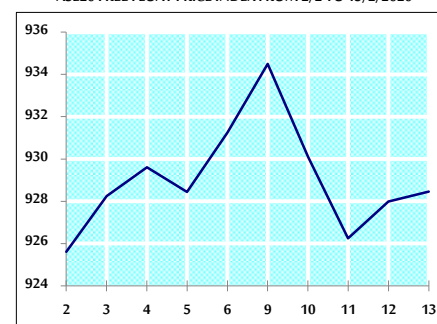
VALUE TRADED BY SECTOR THURSDAY 13/2/2020



GENERAL FREE FLOAT PRICE INDEX FROM 2/2 TO 13/2/2020



ASE20 FREE FLOAT PRICE INDEX FROM 2/2 TO 13/2/2020



GENERAL PRICE INDEX FROM 2/2 TO 13/2/2020

