

Daily Summary for Amman Stock Exchange

VALUE TRADED (JD)

	2019	2020	NET CHANGE	CHANGE (%)
Daily	4,508,367	4,852,648	344,281	7.64%
Cumulative(2/2-2/2)	4,508,367	4,852,648	344,281	7.64%
Cumulative(2/1-2/2)	95,402,737	109,882,505	14,479,768	15.18%

NO. OF SHARES TRADED

	2019	2020	NET CHANGE	CHANGE (%)
Daily	3,066,662	5,295,120	2,228,458	72.67%
Cumulative(2/2-2/2)	3,066,662	5,295,120	2,228,458	72.67%
Cumulative(2/1-2/2)	68,815,265	98,393,724	29,578,459	42.98%

NO. OF TRANSACTIONS

	2019	2020	NET CHANGE	CHANGE (%)
Daily	2,606	2,615	9	0.35%
Cumulative(2/2-2/2)	2,606	2,615	9	0.35%
Cumulative(2/1-2/2)	38,523	46,769	8,246	21.41%

SOME FINANCIAL RATIOS FOR THE ASE (2/2/2020)

SECTOR	P/E	P/BV	DIVIDEND YIELD (%)	TURNOVER (%)
FINANCIAL	10.846	0.968	5.943	0.093
SERVICES	15.860	1.128	5.480	0.050
INDUSTRY	17.497	1.436	3.698	0.067
OVERALL	11.738	1.091	5.489	0.079

STOCK PRICE INDEX WEIGHTED BY FREE FLOAT MARKET CAPITALIZATION (1999=1000)

	THURSDAY 30/01/2020	SUNDAY 02/02/2020	% CHANGE	
			DAY BEFORE	YTD
GENERAL	1867.9	1871.2	0.18%	3.08%
FINANCIAL	2517.3	2517.3	0.00%	2.75%
SERVICES	1328.1	1337.6	0.72%	3.45%
INDUSTRY	1922.7	1923.5	0.04%	3.58%

STOCK PRICE INDEX WEIGHTED BY FREE FLOAT MARKET CAPITALIZATION ASE20 (2014=1000)

	925.3	925.6	0.04%	3.89%
--	-------	-------	-------	-------

STOCK PRICE INDEX WEIGHTED BY MARKET CAPITALIZATION (1991=1000)

	THURSDAY 30/01/2020	SUNDAY 02/02/2020	% CHANGE	
			DAY BEFORE	YTD
GENERAL	3581.0	3569.4	-0.32%	1.58%
BANKS	7206.0	7156.3	-0.69%	0.85%
INSURANCE	1339.8	1341.5	0.13%	4.60%
SERVICES	744.8	746.5	0.23%	1.46%
INDUSTRY	2689.3	2693.6	0.16%	3.08%

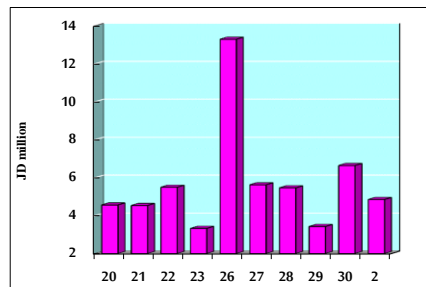
STOCK PRICE MARKET INDEX WEIGHTED BY FREE FLOAT MARKET CAP. (2012=1000)

	THURSDAY 30/01/2020	SUNDAY 02/02/2020	% CHANGE	
			DAY BEFORE	YTD
FIRST MARKET	988.8	990.6	0.17%	3.63%
SECOND MARKET	844.3	849.9	0.66%	1.66%

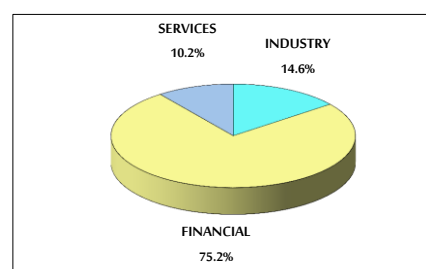
MARKET CAPITALIZATION (JD)

	15,169,852,815	15,124,121,220	-0.30%	1.40%
--	----------------	----------------	--------	-------

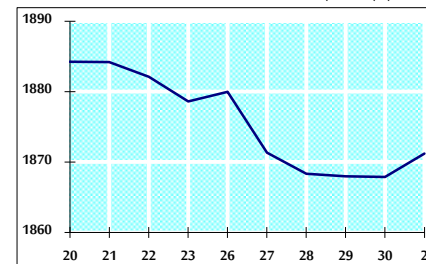
VALUE TRADED FROM 20/1 TO 2/2/2020



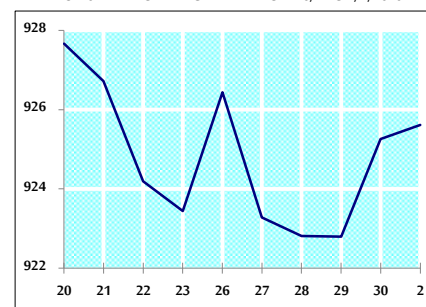
VALUE TRADED BY SECTOR SUNDAY 2/2/2020



GENERAL FREE FLOAT PRICE INDEX FROM 20/1 TO 2/2/2020



ASE20 FREE FLOAT PRICE INDEX FROM 20/1 TO 2/2/2020



GENERAL PRICE INDEX FROM 20/1 TO 2/2/2020

