

## Daily Summary for Amman Stock Exchange

### VALUE TRADED (JD)

	2018	2019	NET CHANGE	CHANGE (%)
Daily	343,081,382	4,226,961	-338,854,421	-98.77%
Cumulative(1/12-29/12)	584,684,006	148,657,710	-436,026,296	-74.57%
Cumulative(2/1-29/12)	2,311,930,868	1,575,628,768	-736,302,100	-31.85%

### NO. OF SHARES TRADED

	2018	2019	NET CHANGE	CHANGE (%)
Daily	97,294,025	4,371,030	-92,922,995	-95.51%
Cumulative(1/12-29/12)	180,485,579	128,138,862	-52,346,717	-29.00%
Cumulative(2/1-29/12)	1,239,106,108	1,239,044,093	-62,015	-0.01%

### NO. OF TRANSACTIONS

	2018	2019	NET CHANGE	CHANGE (%)
Daily	1,624	1,410	-214	-13.18%
Cumulative(1/12-29/12)	33,608	33,605	-3	-0.01%
Cumulative(2/1-29/12)	509,746	499,412	-10,334	-2.03%

### SOME FINANCIAL RATIOS FOR THE ASE (29/12/2019)

SECTOR	P/E	P/BV	DIVIDEND YIELD (%)	TURNOVER (%)
FINANCIAL	10.794	0.966	5.959	0.080
SERVICES	14.651	1.091	5.728	0.029
INDUSTRY	16.885	1.386	3.834	0.061
OVERALL	11.377	1.057	5.713	0.066

### STOCK PRICE INDEX WEIGHTED BY FREE FLOAT MARKET CAPITALIZATION (1999=1000)

	THURSDAY 26/12/2019	SUNDAY 29/12/2019	% CHANGE	
			DAY BEFORE	YTD
GENERAL	1812.4	1811.0	-0.08%	-5.12%
FINANCIAL	2450.8	2450.5	-0.02%	-7.62%
SERVICES	1289.9	1289.1	-0.05%	0.73%
INDUSTRY	1831.4	1832.7	0.07%	-2.66%

### STOCK PRICE INDEX WEIGHTED BY FREE FLOAT MARKET CAPITALIZATION ASE20 (2014=1000)

	THURSDAY 26/12/2019	SUNDAY 29/12/2019	% CHANGE
	887.7	887.4	-0.04%

### STOCK PRICE INDEX WEIGHTED BY MARKET CAPITALIZATION (1991=1000)

	THURSDAY 26/12/2019	SUNDAY 29/12/2019	% CHANGE	
			DAY BEFORE	YTD
GENERAL	3510.7	3517.8	0.20%	-7.36%
BANKS	7124.0	7145.4	0.30%	-13.35%
INSURANCE	1281.3	1280.4	-0.07%	-6.98%
SERVICES	732.3	730.7	-0.21%	-8.29%
INDUSTRY	2585.0	2589.9	0.19%	12.05%

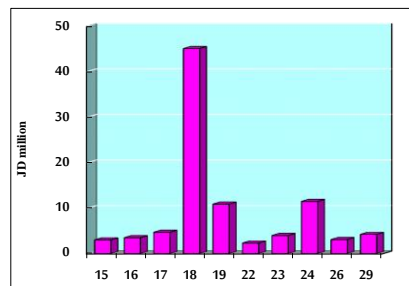
### STOCK PRICE MARKET INDEX WEIGHTED BY FREE FLOAT MARKET CAP. (2012=1000)

	THURSDAY 26/12/2019	SUNDAY 29/12/2019	% CHANGE	
			DAY BEFORE	YTD
FIRST MARKET	955.5	955.4	-0.01%	-5.52%
SECOND MARKET	833.9	831.1	-0.34%	-0.06%

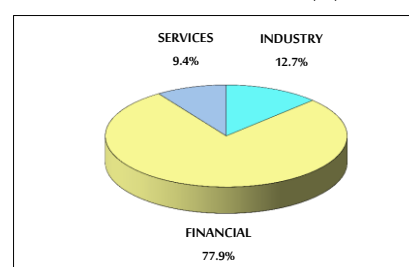
### MARKET CAPITALIZATION (JD)

	THURSDAY 26/12/2019	SUNDAY 29/12/2019	% CHANGE
	14,882,695,287	14,919,271,157	0.25%

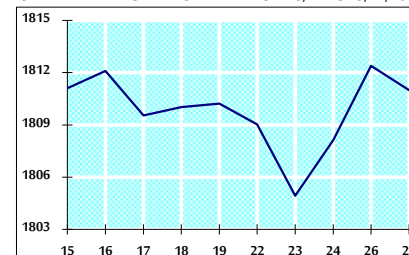
### VALUE TRADED FROM 15/12 TO 29/12/2019



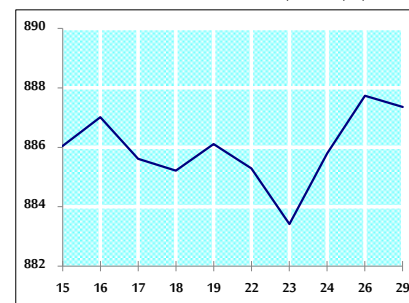
### VALUE TRADED BY SECTOR SUNDAY 29/12/2019



### GENERAL FREE FLOAT PRICE INDEX FROM 15/12 TO 29/12/2019



### ASE20 FREE FLOAT PRICE INDEX FROM 15/12 TO 29/12/2019



### GENERAL PRICE INDEX FROM 15/12 TO 29/12/2019

