

Daily Summary for Amman Stock Exchange

VALUE TRADED (JD)

	2018	2019	NET CHANGE	CHANGE (%)
Daily	6,411,451	1,508,872	-4,902,579	-76.47%
Cumulative(3/11-14/11)	53,746,441	51,153,365	-2,593,076	-4.82%
Cumulative(2/1-14/11)	1,680,016,463	1,388,210,924	-291,805,539	-17.37%

NO. OF SHARES TRADED

	2018	2019	NET CHANGE	CHANGE (%)
Daily	5,498,507	1,584,469	-3,914,038	-71.18%
Cumulative(3/11-14/11)	47,718,248	46,464,766	-1,253,482	-2.63%
Cumulative(2/1-14/11)	1,018,419,510	1,068,564,721	50,145,211	4.92%

NO. OF TRANSACTIONS

	2018	2019	NET CHANGE	CHANGE (%)
Daily	2,396	1,249	-1,147	-47.87%
Cumulative(3/11-14/11)	24,984	17,015	-7,969	-31.90%
Cumulative(2/1-14/11)	454,777	447,863	-6,914	-1.52%

SOME FINANCIAL RATIOS FOR THE ASE (14/11/2019)

SECTOR	P/E	P/BV	DIVIDEND YIELD (%)	TURNOVER (%)
FINANCIAL	10.720	0.959	6.000	0.020
SERVICES	14.750	1.099	5.689	0.022
INDUSTRY	20.358	1.371	3.867	0.043
OVERALL	11.705	1.054	5.726	0.024

STOCK PRICE INDEX WEIGHTED BY FREE FLOAT MARKET CAPITALIZATION (1999=1000)

	WEDNESDAY 13/11/2019	THURSDAY 14/11/2019	% CHANGE	
			DAY BEFORE	YTD
GENERAL	1809.6	1807.0	-0.15%	-5.34%
FINANCIAL	2441.1	2438.0	-0.13%	-8.09%
SERVICES	1292.2	1290.0	-0.17%	0.79%
INDUSTRY	1835.6	1833.7	-0.10%	-2.60%

STOCK PRICE INDEX WEIGHTED BY FREE FLOAT MARKET CAPITALIZATION ASE20 (2014=1000)

	883.5	883.2	-0.03%	-4.66%
--	-------	-------	--------	--------

STOCK PRICE INDEX WEIGHTED BY MARKET CAPITALIZATION (1991=1000)

	WEDNESDAY 13/11/2019	THURSDAY 14/11/2019	% CHANGE	
			DAY BEFORE	YTD
GENERAL	3502.6	3504.1	0.04%	-7.72%
BANKS	7080.1	7075.4	-0.07%	-14.20%
INSURANCE	1303.5	1307.5	0.31%	-5.01%
SERVICES	740.4	739.2	-0.17%	-7.23%
INDUSTRY	2583.2	2594.5	0.44%	12.25%

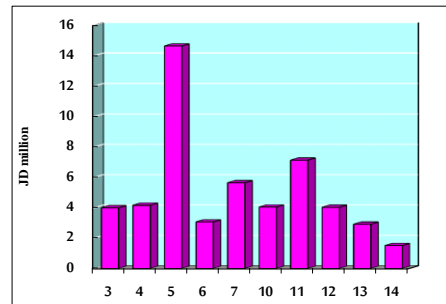
STOCK PRICE MARKET INDEX WEIGHTED BY FREE FLOAT MARKET CAP. (2012=1000)

	WEDNESDAY 13/11/2019	THURSDAY 14/11/2019	% CHANGE	
			DAY BEFORE	YTD
FIRST MARKET	953.7	953.8	0.01%	-5.69%
SECOND MARKET	844.3	837.4	-0.81%	0.70%

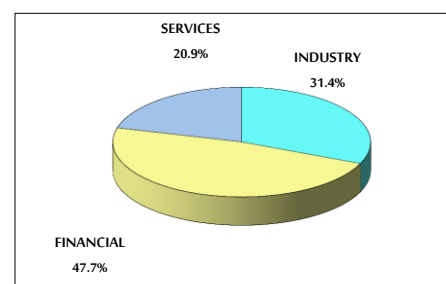
MARKET CAPITALIZATION (JD)

	14,900,178,751	14,906,316,167	0.04%	-7.54%
--	----------------	----------------	-------	--------

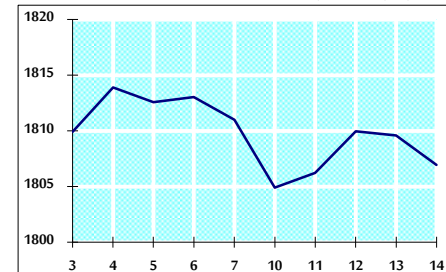
VALUE TRADED FROM 3/11 TO 14/11/2019



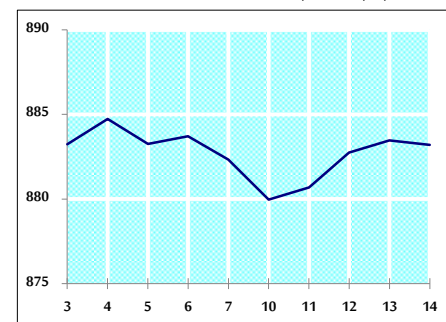
VALUE TRADED BY SECTOR THURSDAY 14/11/2019



GENERAL FREE FLOAT PRICE INDEX FROM 3/11 TO 14/11/2019



ASE20 FREE FLOAT PRICE INDEX FROM 3/11 TO 14/11/2019



GENERAL PRICE INDEX FROM 3/11 TO 14/11/2019

