

Daily Summary for Amman Stock Exchange

VALUE TRADED (JD)

	2018	2019	NET CHANGE	CHANGE (%)
Daily	5,087,077	2,947,669	-2,139,408	-42.06%
Cumulative(3/11-13/11)	47,334,990	49,644,493	2,309,503	4.88%
Cumulative(2/1-13/11)	1,673,605,012	1,386,702,052	-286,902,960	-17.14%

NO. OF SHARES TRADED

	2018	2019	NET CHANGE	CHANGE (%)
Daily	7,206,347	2,513,147	-4,693,200	-65.13%
Cumulative(3/11-13/11)	42,219,741	44,880,297	2,660,556	6.30%
Cumulative(2/1-13/11)	1,012,921,003	1,066,980,252	54,059,249	5.34%

NO. OF TRANSACTIONS

	2018	2019	NET CHANGE	CHANGE (%)
Daily	2,438	1,538	-900	-36.92%
Cumulative(3/11-13/11)	22,588	15,766	-6,822	-30.20%
Cumulative(2/1-13/11)	452,381	446,614	-5,767	-1.27%

SOME FINANCIAL RATIOS FOR THE ASE (13/11/2019)

SECTOR	P/E	P/BV	DIVIDEND YIELD (%)	TURNOVER (%)
FINANCIAL	10.730	0.960	5.995	0.029
SERVICES	14.758	1.099	5.686	0.054
INDUSTRY	20.266	1.364	3.885	0.047
OVERALL	11.700	1.054	5.729	0.037

STOCK PRICE INDEX WEIGHTED BY FREE FLOAT MARKET CAPITALIZATION (1999=1000)

	TUESDAY 12/11/2019	WEDNESDAY 13/11/2019	% CHANGE	
			DAY BEFORE	YTD
GENERAL	1810.0	1809.6	-0.02%	-5.20%
FINANCIAL	2446.4	2441.1	-0.22%	-7.98%
SERVICES	1291.1	1292.2	0.08%	0.97%
INDUSTRY	1824.0	1835.6	0.64%	-2.50%

STOCK PRICE INDEX WEIGHTED BY FREE FLOAT MARKET CAPITALIZATION ASE20 (2014=1000)

	882.8	883.5	0.08%	-4.63%
--	-------	-------	-------	--------

STOCK PRICE INDEX WEIGHTED BY MARKET CAPITALIZATION (1991=1000)

	TUESDAY 12/11/2019	WEDNESDAY 13/11/2019	% CHANGE	
			DAY BEFORE	YTD
GENERAL	3502.6	3502.6	0.00%	-7.76%
BANKS	7105.3	7080.1	-0.35%	-14.14%
INSURANCE	1304.2	1303.5	-0.06%	-5.30%
SERVICES	742.9	740.4	-0.33%	-7.08%
INDUSTRY	2555.3	2583.2	1.09%	11.76%

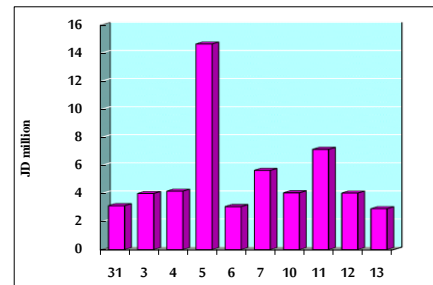
STOCK PRICE MARKET INDEX WEIGHTED BY FREE FLOAT MARKET CAP. (2012=1000)

	TUESDAY 12/11/2019	WEDNESDAY 13/11/2019	% CHANGE	
			DAY BEFORE	YTD
FIRST MARKET	953.5	953.7	0.02%	-5.70%
SECOND MARKET	845.7	844.3	-0.17%	1.52%

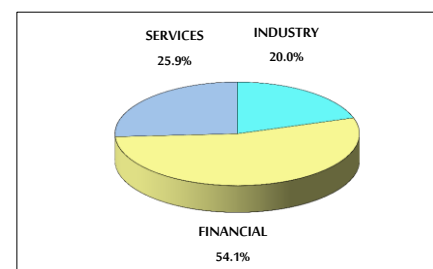
MARKET CAPITALIZATION (JD)

	14,899,543,333	14,900,178,751	0.00%	-7.58%
--	----------------	----------------	-------	--------

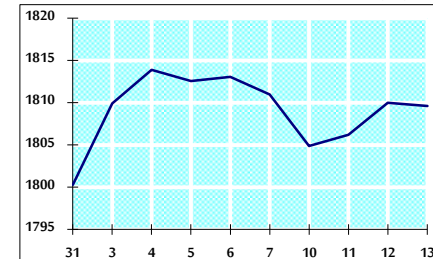
VALUE TRADED FROM 31/10 TO 13/11/2019



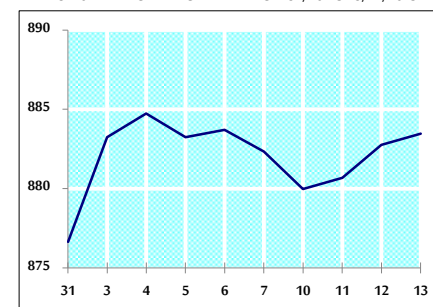
VALUE TRADED BY SECTOR WEDNESDAY 13/11/2019



GENERAL FREE FLOAT PRICE INDEX FROM 31/10 TO 13/11/2019



ASE20 FREE FLOAT PRICE INDEX FROM 31/10 TO 13/11/2019



GENERAL PRICE INDEX FROM 31/10 TO 13/11/2019

