

Daily Summary for Amman Stock Exchange

VALUE TRADED (JD)

	2018	2019	NET CHANGE	CHANGE (%)
Daily	5,835,305	4,026,532	-1,808,773	-31.00%
Cumulative(3/11-12/11)	42,247,913	46,696,824	4,448,911	10.53%
Cumulative(2/1-12/11)	1,668,517,935	1,383,754,383	-284,763,552	-17.07%

NO. OF SHARES TRADED

	2018	2019	NET CHANGE	CHANGE (%)
Daily	5,389,997	3,927,173	-1,462,824	-27.14%
Cumulative(3/11-12/11)	35,013,394	42,367,150	7,353,756	21.00%
Cumulative(2/1-12/11)	1,005,714,656	1,064,467,105	58,752,449	5.84%

NO. OF TRANSACTIONS

	2018	2019	NET CHANGE	CHANGE (%)
Daily	3,221	2,099	-1,122	-34.83%
Cumulative(3/11-12/11)	20,150	14,228	-5,922	-29.39%
Cumulative(2/1-12/11)	449,943	445,076	-4,867	-1.08%

SOME FINANCIAL RATIOS FOR THE ASE (12/11/2019)

SECTOR	P/E	P/BV	DIVIDEND YIELD (%)	TURNOVER (%)
FINANCIAL	10.769	0.964	5.973	0.056
SERVICES	14.763	1.100	5.684	0.061
INDUSTRY	20.054	1.350	3.926	0.067
OVERALL	11.700	1.054	5.729	0.058

STOCK PRICE INDEX WEIGHTED BY FREE FLOAT MARKET CAPITALIZATION (1999=1000)

	MONDAY 11/11/2019	TUESDAY 12/11/2019	% CHANGE	
			DAY BEFORE	YTD
GENERAL	1806.2	1810.0	0.21%	-5.18%
FINANCIAL	2436.7	2446.4	0.40%	-7.78%
SERVICES	1296.2	1291.1	-0.39%	0.89%
INDUSTRY	1822.3	1824.0	0.09%	-3.12%

STOCK PRICE INDEX WEIGHTED BY FREE FLOAT MARKET CAPITALIZATION ASE20 (2014=1000)

	880.7	882.8	0.24%	-4.71%
--	-------	-------	-------	--------

STOCK PRICE INDEX WEIGHTED BY MARKET CAPITALIZATION (1991=1000)

	MONDAY 11/11/2019	TUESDAY 12/11/2019	% CHANGE	
			DAY BEFORE	YTD
GENERAL	3484.1	3502.6	0.53%	-7.76%
BANKS	7051.5	7105.3	0.76%	-13.83%
INSURANCE	1303.8	1304.2	0.04%	-5.25%
SERVICES	743.8	742.9	-0.13%	-6.77%
INDUSTRY	2546.3	2555.3	0.35%	10.55%

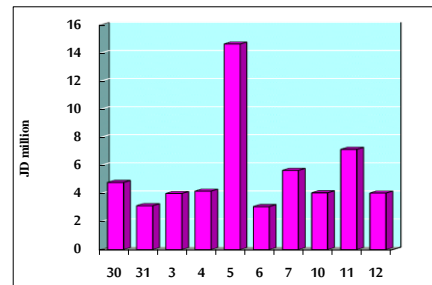
STOCK PRICE MARKET INDEX WEIGHTED BY FREE FLOAT MARKET CAP. (2012=1000)

	MONDAY 11/11/2019	TUESDAY 12/11/2019	% CHANGE	
			DAY BEFORE	YTD
FIRST MARKET	951.8	953.5	0.18%	-5.71%
SECOND MARKET	843.1	845.7	0.31%	1.69%

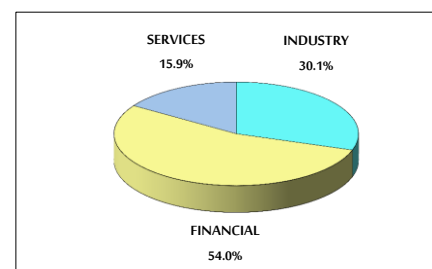
MARKET CAPITALIZATION (JD)

	14,838,285,114	14,899,543,333	0.41%	-7.59%
--	----------------	----------------	-------	--------

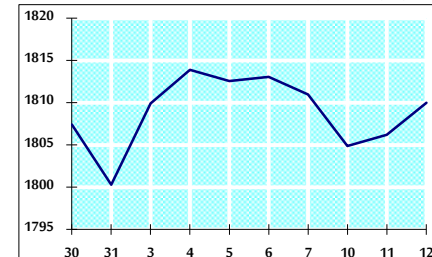
VALUE TRADED FROM 30/10 TO 12/11/2019



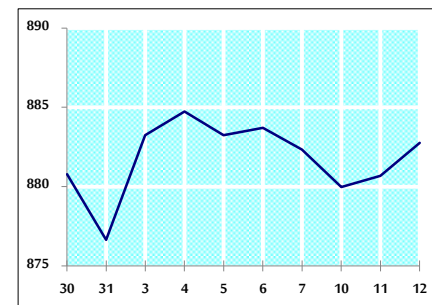
VALUE TRADED BY SECTOR TUESDAY 12/11/2019



GENERAL FREE FLOAT PRICE INDEX FROM 30/10 TO 12/11/2019



ASE20 FREE FLOAT PRICE INDEX FROM 30/10 TO 12/11/2019



GENERAL PRICE INDEX FROM 30/10 TO 12/11/2019

