

Daily Summary for Amman Stock Exchange

VALUE TRADED (JD)

	2018	2019	NET CHANGE	CHANGE (%)
Daily	4,805,899	7,133,921	2,328,022	48.44%
Cumulative(3/11-11/11)	36,412,608	42,670,292	6,257,684	17.19%
Cumulative(2/1-11/11)	1,662,682,630	1,379,727,851	-282,954,779	-17.02%

NO. OF SHARES TRADED

	2018	2019	NET CHANGE	CHANGE (%)
Daily	4,637,843	4,709,818	71,975	1.55%
Cumulative(3/11-11/11)	29,623,397	38,439,977	8,816,580	29.76%
Cumulative(2/1-11/11)	1,000,324,659	1,060,539,932	60,215,273	6.02%

NO. OF TRANSACTIONS

	2018	2019	NET CHANGE	CHANGE (%)
Daily	2,884	1,841	-1,043	-36.17%
Cumulative(3/11-11/11)	16,929	12,129	-4,800	-28.35%
Cumulative(2/1-11/11)	446,722	442,977	-3,745	-0.84%

SOME FINANCIAL RATIOS FOR THE ASE (11/11/2019)

SECTOR	P/E	P/BV	DIVIDEND YIELD (%)	TURNOVER (%)
FINANCIAL	10.704	0.958	6.009	0.049
SERVICES	14.819	1.104	5.663	0.038
INDUSTRY	19.968	1.344	3.943	0.217
OVERALL	11.639	1.048	5.759	0.070

STOCK PRICE INDEX WEIGHTED BY FREE FLOAT MARKET CAPITALIZATION (1999=1000)

	SUNDAY 10/11/2019	MONDAY 11/11/2019	% CHANGE	
			DAY BEFORE	YTD
GENERAL	1804.9	1806.2	0.07%	-5.37%
FINANCIAL	2433.3	2436.7	0.14%	-8.14%
SERVICES	1293.8	1296.2	0.18%	1.28%
INDUSTRY	1826.9	1822.3	-0.25%	-3.21%

STOCK PRICE INDEX WEIGHTED BY FREE FLOAT MARKET CAPITALIZATION ASE20 (2014=1000)

	880.0	880.7	0.08%	-4.93%
--	-------	-------	-------	--------

STOCK PRICE INDEX WEIGHTED BY MARKET CAPITALIZATION (1991=1000)

	SUNDAY 10/11/2019	MONDAY 11/11/2019	% CHANGE	
			DAY BEFORE	YTD
GENERAL	3487.4	3484.1	-0.09%	-8.24%
BANKS	7066.4	7051.5	-0.21%	-14.49%
INSURANCE	1304.0	1303.8	-0.02%	-5.28%
SERVICES	740.6	743.8	0.43%	-6.65%
INDUSTRY	2549.3	2546.3	-0.12%	10.16%

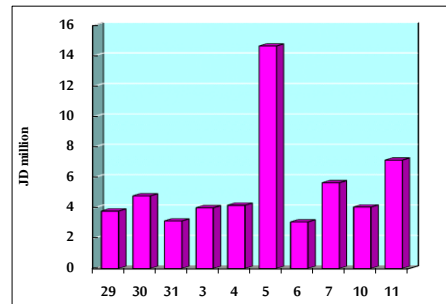
STOCK PRICE MARKET INDEX WEIGHTED BY FREE FLOAT MARKET CAP. (2012=1000)

	SUNDAY 10/11/2019	MONDAY 11/11/2019	% CHANGE	
			DAY BEFORE	YTD
FIRST MARKET	950.8	951.8	0.10%	-5.88%
SECOND MARKET	843.1	843.1	0.00%	1.38%

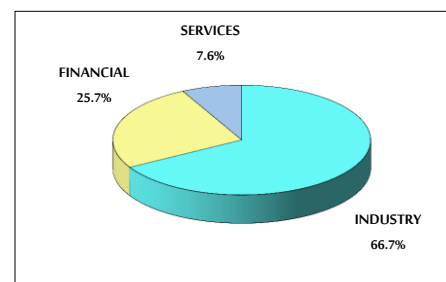
MARKET CAPITALIZATION (JD)

	14,848,440,205	14,838,285,114	-0.07%	-7.97%
--	----------------	----------------	--------	--------

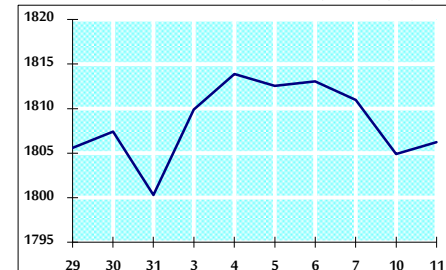
VALUE TRADED FROM 29/10 TO 11/11/2019



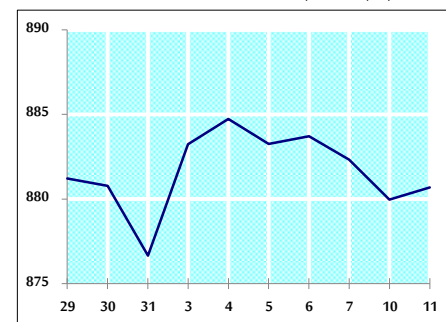
VALUE TRADED BY SECTOR MONDAY 11/11/2019



GENERAL FREE FLOAT PRICE INDEX FROM 29/10 TO 11/11/2019



ASE20 FREE FLOAT PRICE INDEX FROM 29/10 TO 11/11/2019



GENERAL PRICE INDEX FROM 29/10 TO 11/11/2019

