

## Daily Summary for Amman Stock Exchange

### VALUE TRADED (JD)

	2018	2019	NET CHANGE	CHANGE (%)
Daily	4,274,070	4,043,264	-230,806	-5.40%
Cumulative(3/11-10/11)	31,606,709	35,536,371	3,929,662	12.43%
Cumulative(2/1-10/11)	1,657,876,731	1,372,593,930	-285,282,801	-17.21%

### NO. OF SHARES TRADED

	2018	2019	NET CHANGE	CHANGE (%)
Daily	4,113,278	3,764,392	-348,886	-8.48%
Cumulative(3/11-10/11)	24,985,554	33,730,159	8,744,605	35.00%
Cumulative(2/1-10/11)	995,686,816	1,055,830,114	60,143,298	6.04%

### NO. OF TRANSACTIONS

	2018	2019	NET CHANGE	CHANGE (%)
Daily	2,530	1,843	-687	-27.15%
Cumulative(3/11-10/11)	14,045	10,288	-3,757	-26.75%
Cumulative(2/1-10/11)	443,838	441,136	-2,702	-0.61%

### SOME FINANCIAL RATIOS FOR THE ASE (10/11/2019)

SECTOR	P/E	P/BV	DIVIDEND YIELD (%)	TURNOVER (%)
FINANCIAL	10.719	0.959	6.000	0.054
SERVICES	14.773	1.100	5.680	0.040
INDUSTRY	19.992	1.346	3.938	0.090
OVERALL	11.649	1.049	5.754	0.056

### STOCK PRICE INDEX WEIGHTED BY FREE FLOAT MARKET CAPITALIZATION (1999=1000)

	THURSDAY 07/11/2019	SUNDAY 10/11/2019	% CHANGE	
			DAY BEFORE	YTD
GENERAL	1811.0	1804.9	-0.34%	-5.44%
FINANCIAL	2435.1	2433.3	-0.08%	-8.27%
SERVICES	1297.8	1293.8	-0.31%	1.09%
INDUSTRY	1847.1	1826.9	-1.09%	-2.96%

### STOCK PRICE INDEX WEIGHTED BY FREE FLOAT MARKET CAPITALIZATION ASE20 (2014=1000)

	882.3	880.0	-0.27%	-5.01%
--	-------	-------	--------	--------

### STOCK PRICE INDEX WEIGHTED BY MARKET CAPITALIZATION (1991=1000)

	THURSDAY 07/11/2019	SUNDAY 10/11/2019	% CHANGE	
			DAY BEFORE	YTD
GENERAL	3505.8	3487.4	-0.52%	-8.16%
BANKS	7058.0	7066.4	0.12%	-14.30%
INSURANCE	1301.4	1304.0	0.20%	-5.27%
SERVICES	742.5	740.6	-0.25%	-7.05%
INDUSTRY	2608.3	2549.3	-2.26%	10.29%

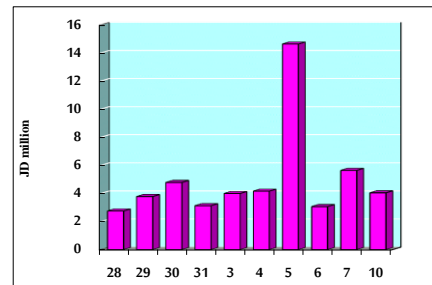
### STOCK PRICE MARKET INDEX WEIGHTED BY FREE FLOAT MARKET CAP. (2012=1000)

	THURSDAY 07/11/2019	SUNDAY 10/11/2019	% CHANGE	
			DAY BEFORE	YTD
FIRST MARKET	953.3	950.8	-0.26%	-5.98%
SECOND MARKET	849.3	843.1	-0.73%	1.38%

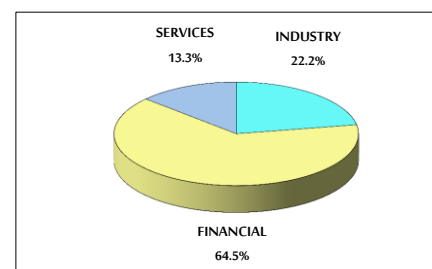
### MARKET CAPITALIZATION (JD)

	14,917,858,875	14,848,440,205	-0.47%	-7.90%
--	----------------	----------------	--------	--------

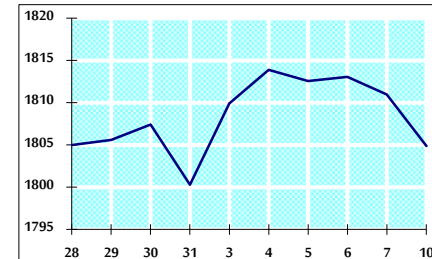
### VALUE TRADED FROM 28/10 TO 10/11/2019



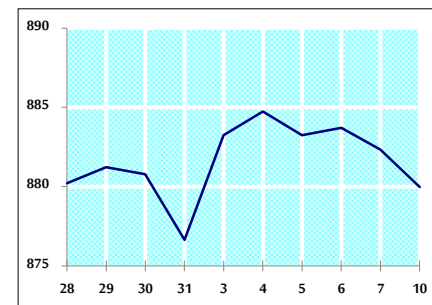
### VALUE TRADED BY SECTOR SUNDAY 10/11/2019



### GENERAL FREE FLOAT PRICE INDEX FROM 28/10 TO 10/11/2019



### ASE20 FREE FLOAT PRICE INDEX FROM 28/10 TO 10/11/2019



### GENERAL PRICE INDEX FROM 28/10 TO 10/11/2019

