

## Daily Summary for Amman Stock Exchange

### VALUE TRADED (JD)

	2018	2019	NET CHANGE	CHANGE (%)
Daily	2,817,291	3,375,078	557,787	19.80%
Cumulative(3/11-24/11)	82,111,045	74,865,885	-7,245,160	-8.82%
Cumulative(2/1-24/11)	1,708,381,067	1,411,923,444	-296,457,623	-17.35%

### NO. OF SHARES TRADED

	2018	2019	NET CHANGE	CHANGE (%)
Daily	2,637,619	3,070,381	432,762	16.41%
Cumulative(3/11-24/11)	70,889,088	72,765,607	1,876,519	2.65%
Cumulative(2/1-24/11)	1,041,590,350	1,094,865,562	53,275,212	5.11%

### NO. OF TRANSACTIONS

	2018	2019	NET CHANGE	CHANGE (%)
Daily	1,281	1,504	223	17.41%
Cumulative(3/11-24/11)	37,419	27,538	-9,881	-26.41%
Cumulative(2/1-24/11)	467,212	458,386	-8,826	-1.89%

### SOME FINANCIAL RATIOS FOR THE ASE (24/11/2019)

SECTOR	P/E	P/BV	DIVIDEND YIELD (%)	TURNOVER (%)
FINANCIAL	10.628	0.951	6.052	0.039
SERVICES	14.620	1.089	5.740	0.035
INDUSTRY	20.132	1.358	3.915	0.092
OVERALL	11.598	1.045	5.779	0.046

### STOCK PRICE INDEX WEIGHTED BY FREE FLOAT MARKET CAPITALIZATION (1999=1000)

	THURSDAY 21/11/2019	SUNDAY 24/11/2019	% CHANGE	
			DAY BEFORE	YTD
GENERAL	1791.4	1793.5	0.12%	-6.04%
FINANCIAL	2416.4	2421.6	0.22%	-8.71%
SERVICES	1285.3	1283.7	-0.13%	0.30%
INDUSTRY	1803.7	1805.6	0.11%	-4.09%

### STOCK PRICE INDEX WEIGHTED BY FREE FLOAT MARKET CAPITALIZATION ASE20 (2014=1000)

	873.9	874.8	0.11%	-5.57%
--	-------	-------	-------	--------

### STOCK PRICE INDEX WEIGHTED BY MARKET CAPITALIZATION (1991=1000)

	THURSDAY 21/11/2019	SUNDAY 24/11/2019	% CHANGE	
			DAY BEFORE	YTD
GENERAL	3469.8	3472.0	0.06%	-8.56%
BANKS	7010.6	7006.7	-0.05%	-15.03%
INSURANCE	1315.3	1315.8	0.04%	-4.41%
SERVICES	736.6	737.0	0.05%	-7.50%
INDUSTRY	2555.2	2564.2	0.35%	10.94%

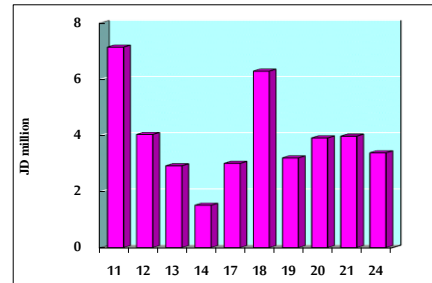
### STOCK PRICE MARKET INDEX WEIGHTED BY FREE FLOAT MARKET CAP. (2012=1000)

	THURSDAY 21/11/2019	SUNDAY 24/11/2019	% CHANGE	
			DAY BEFORE	YTD
FIRST MARKET	943.9	945.4	0.16%	-6.52%
SECOND MARKET	842.1	843.3	0.14%	1.40%

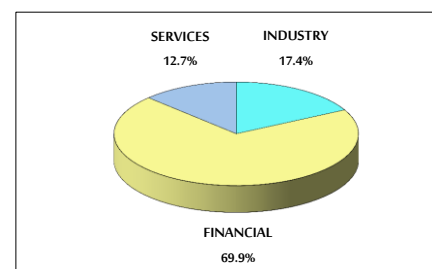
### MARKET CAPITALIZATION (JD)

	14,737,361,757	14,746,405,438	0.06%	-8.54%
--	----------------	----------------	-------	--------

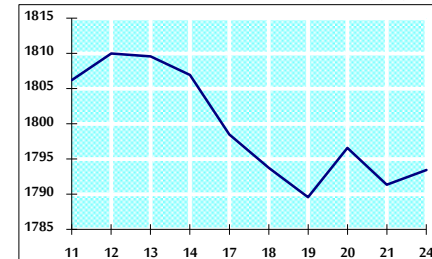
### VALUE TRADED FROM 11/11 TO 24/11/2019



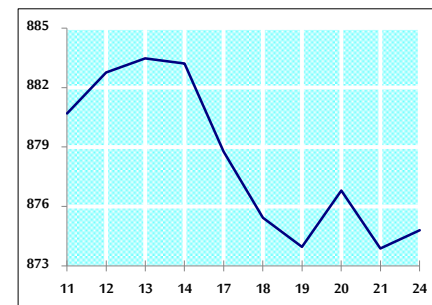
### VALUE TRADED BY SECTOR SUNDAY 24/11/2019



### GENERAL FREE FLOAT PRICE INDEX FROM 11/11 TO 24/11/2019



### ASE20 FREE FLOAT PRICE INDEX FROM 11/11 TO 24/11/2019



### GENERAL PRICE INDEX FROM 11/11 TO 24/11/2019

