

Daily Summary for Amman Stock Exchange

VALUE TRADED (JD)

	2018	2019	NET CHANGE	CHANGE (%)
Daily	6,170,185	14,631,748	8,461,563	137.14%
Cumulative(3/11-5/11)	15,387,985	22,786,788	7,398,803	48.08%
Cumulative(2/1-5/11)	1,641,658,007	1,359,844,347	-281,813,660	-17.17%

NO. OF SHARES TRADED

	2018	2019	NET CHANGE	CHANGE (%)
Daily	3,756,231	13,782,589	10,026,358	266.93%
Cumulative(3/11-5/11)	12,084,646	21,843,927	9,759,281	80.76%
Cumulative(2/1-5/11)	982,785,908	1,043,943,882	61,157,974	6.22%

NO. OF TRANSACTIONS

	2018	2019	NET CHANGE	CHANGE (%)
Daily	2,043	1,716	-327	-16.01%
Cumulative(3/11-5/11)	6,408	4,948	-1,460	-22.78%
Cumulative(2/1-5/11)	436,201	435,796	-405	-0.09%

SOME FINANCIAL RATIOS FOR THE ASE (5/11/2019)

SECTOR	P/E	P/BV	DIVIDEND YIELD (%)	TURNOVER (%)
FINANCIAL	10.712	0.958	6.005	0.294
SERVICES	14.812	1.103	5.665	0.039
INDUSTRY	20.438	1.376	3.852	0.085
OVERALL	11.713	1.055	5.722	0.205

STOCK PRICE INDEX WEIGHTED BY FREE FLOAT MARKET CAPITALIZATION (1999=1000)

	MONDAY 04/11/2019	TUESDAY 05/11/2019	% CHANGE	
			DAY BEFORE	YTD
GENERAL	1813.9	1812.6	-0.07%	-5.04%
FINANCIAL	2437.9	2437.3	-0.03%	-8.12%
SERVICES	1303.9	1302.8	-0.08%	1.80%
INDUSTRY	1844.2	1841.0	-0.18%	-2.22%

STOCK PRICE INDEX WEIGHTED BY FREE FLOAT MARKET CAPITALIZATION ASE20 (2014=1000)

	884.7	883.3	-0.17%	-4.66%
--	-------	-------	--------	--------

STOCK PRICE INDEX WEIGHTED BY MARKET CAPITALIZATION (1991=1000)

	MONDAY 04/11/2019	TUESDAY 05/11/2019	% CHANGE	
			DAY BEFORE	YTD
GENERAL	3516.4	3506.4	-0.28%	-7.66%
BANKS	7070.9	7058.7	-0.17%	-14.40%
INSURANCE	1301.6	1307.4	0.44%	-5.02%
SERVICES	742.0	741.4	-0.09%	-6.96%
INDUSTRY	2629.0	2610.8	-0.69%	12.96%

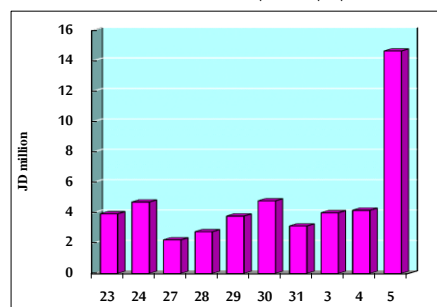
STOCK PRICE MARKET INDEX WEIGHTED BY FREE FLOAT MARKET CAP. (2012=1000)

	MONDAY 04/11/2019	TUESDAY 05/11/2019	% CHANGE	
			DAY BEFORE	YTD
FIRST MARKET	955.2	954.2	-0.11%	-5.65%
SECOND MARKET	846.1	848.2	0.25%	2.00%

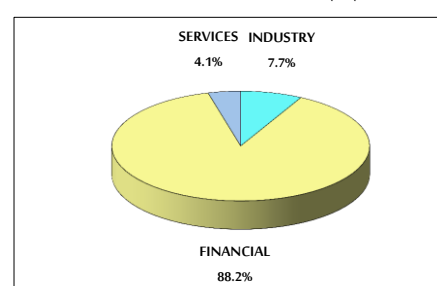
MARKET CAPITALIZATION (JD)

	14,958,878,905	14,920,950,930	-0.25%	-7.45%
--	----------------	----------------	--------	--------

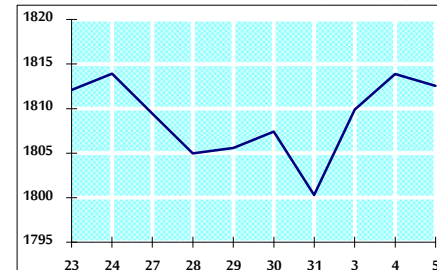
VALUE TRADED FROM 23/10 TO 5/11/2019



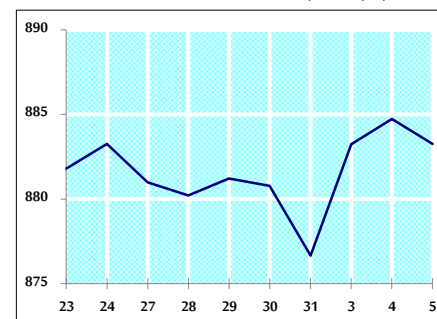
VALUE TRADED BY SECTOR TUESDAY 5/11/2019



GENERAL FREE FLOAT PRICE INDEX FROM 23/10 TO 5/11/2019



ASE20 FREE FLOAT PRICE INDEX FROM 23/10 TO 5/11/2019



GENERAL PRICE INDEX FROM 23/10 TO 5/11/2019

