

Daily Summary for Amman Stock Exchange

VALUE TRADED (JD)

	2018	2019	NET CHANGE	CHANGE (%)
Daily	4,265,920	4,160,711	-105,209	-2.47%
Cumulative(3/11-4/11)	9,217,800	8,155,040	-1,062,760	-11.53%
Cumulative(2/1-4/11)	1,635,487,822	1,345,212,599	-290,275,223	-17.75%

NO. OF SHARES TRADED

	2018	2019	NET CHANGE	CHANGE (%)
Daily	3,444,557	3,393,215	-51,342	-1.49%
Cumulative(3/11-4/11)	8,328,415	8,061,338	-267,077	-3.21%
Cumulative(2/1-4/11)	979,029,677	1,030,161,293	51,131,616	5.22%

NO. OF TRANSACTIONS

	2018	2019	NET CHANGE	CHANGE (%)
Daily	2,217	1,663	-554	-24.99%
Cumulative(3/11-4/11)	4,365	3,232	-1,133	-25.96%
Cumulative(2/1-4/11)	434,158	434,080	-78	-0.02%

SOME FINANCIAL RATIOS FOR THE ASE (4/11/2019)

SECTOR	P/E	P/BV	DIVIDEND YIELD (%)	TURNOVER (%)
FINANCIAL	10.728	0.960	5.996	0.046
SERVICES	14.824	1.104	5.661	0.040
INDUSTRY	20.574	1.385	3.827	0.089
OVERALL	11.746	1.058	5.706	0.050

STOCK PRICE INDEX WEIGHTED BY FREE FLOAT MARKET CAPITALIZATION (1999=1000)

	SUNDAY 03/11/2019	MONDAY 04/11/2019	% CHANGE	
			DAY BEFORE	YTD
GENERAL	1809.9	1813.9	0.22%	-4.97%
FINANCIAL	2430.3	2437.9	0.31%	-8.10%
SERVICES	1302.1	1303.9	0.13%	1.88%
INDUSTRY	1847.2	1844.2	-0.16%	-2.04%

STOCK PRICE INDEX WEIGHTED BY FREE FLOAT MARKET CAPITALIZATION ASE20 (2014=1000)

	883.2	884.7	0.17%	-4.50%
--	-------	-------	-------	--------

STOCK PRICE INDEX WEIGHTED BY MARKET CAPITALIZATION (1991=1000)

	SUNDAY 03/11/2019	MONDAY 04/11/2019	% CHANGE	
			DAY BEFORE	YTD
GENERAL	3500.9	3516.4	0.44%	-7.39%
BANKS	7022.6	7070.9	0.69%	-14.25%
INSURANCE	1301.9	1301.6	-0.02%	-5.44%
SERVICES	738.9	742.0	0.42%	-6.88%
INDUSTRY	2632.4	2629.0	-0.13%	13.74%

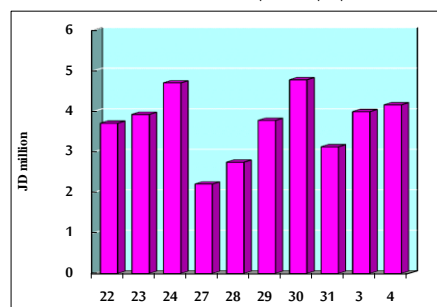
STOCK PRICE MARKET INDEX WEIGHTED BY FREE FLOAT MARKET CAP. (2012=1000)

	SUNDAY 03/11/2019	MONDAY 04/11/2019	% CHANGE	
			DAY BEFORE	YTD
FIRST MARKET	953.2	955.2	0.22%	-5.55%
SECOND MARKET	841.1	846.1	0.60%	1.75%

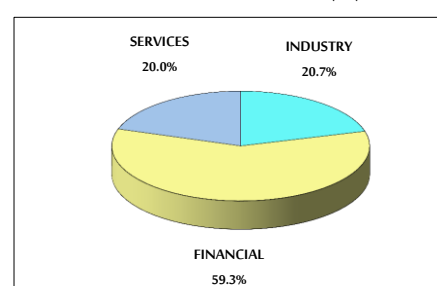
MARKET CAPITALIZATION (JD)

	14,902,491,792	14,958,878,905	0.38%	-7.22%
--	----------------	----------------	-------	--------

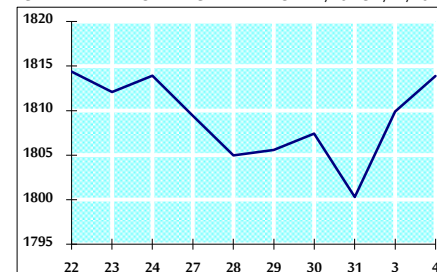
VALUE TRADED FROM 22/10 TO 4/11/2019



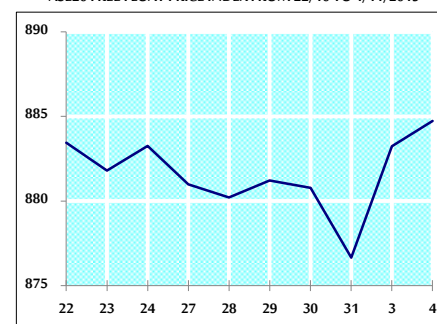
VALUE TRADED BY SECTOR MONDAY 4/11/2019



GENERAL FREE FLOAT PRICE INDEX FROM 22/10 TO 4/11/2019



ASE20 FREE FLOAT PRICE INDEX FROM 22/10 TO 4/11/2019



GENERAL PRICE INDEX FROM 22/10 TO 4/11/2019

