

## Daily Summary for Amman Stock Exchange

### 1- VALUE TRADED (JD)

	2018	2019	NET CHANGE	CHANGE (%)
Daily	4,203,052	5,816,183	1,613,131	38.38%
Cumulative(1/9-4/9)	15,483,022	22,681,972	7,198,950	46.50%
Cumulative(2/1-4/9)	1,093,707,917	948,476,347	-145,231,570	-13.28%

### 2- NO. OF SHARES TRADED

	2018	2019	NET CHANGE	CHANGE (%)
Daily	4,197,804	5,996,834	1,799,030	42.86%
Cumulative(1/9-4/9)	15,422,786	24,179,488	8,756,702	56.78%
Cumulative(2/1-4/9)	766,259,608	802,043,488	35,783,880	4.67%

### 3- NO. OF TRANSACTIONS

	2018	2019	NET CHANGE	CHANGE (%)
Daily	3,184	2,707	-477	-14.98%
Cumulative(1/9-4/9)	9,211	10,071	860	9.34%
Cumulative(2/1-4/9)	344,141	350,006	5,865	1.70%

### 4- SOME FINANCIAL RATIOS FOR THE ASE (4/9/2019)

SECTOR	P/E	P/BV	DIVIDEND YIELD (%)	TURNOVER (%)
FINANCIAL	10.890	0.974	5.906	0.102
SERVICES	16.252	1.133	5.394	0.052
INDUSTRY	19.512	1.314	4.035	0.092
OVERALL	11.683	1.071	5.706	0.089

### 5- STOCK PRICE INDEX WEIGHTED BY FREE FLOAT MARKET CAPITALIZATION (1999=1000)

	TUESDAY 03/09/2019	WEDNESDAY 04/09/2019	% CHANGE	
			DAY BEFORE	YTD
GENERAL	1819.8	1806.1	-0.76%	-5.38%
FINANCIAL	2470.9	2455.0	-0.65%	-7.45%
SERVICES	1302.0	1284.9	-1.31%	0.40%
INDUSTRY	1798.9	1797.7	-0.07%	-4.51%

### 6- STOCK PRICE INDEX WEIGHTED BY MARKET CAPITALIZATION (1991=1000)

	TUESDAY 03/09/2019	WEDNESDAY 04/09/2019	% CHANGE	
			DAY BEFORE	YTD
GENERAL	3524.6	3502.5	-0.62%	-7.76%
BANKS	7246.1	7182.3	-0.88%	-12.90%
INSURANCE	1330.3	1329.2	-0.08%	-3.44%
SERVICES	751.4	749.2	-0.30%	-5.97%
INDUSTRY	2476.5	2472.5	-0.16%	6.97%

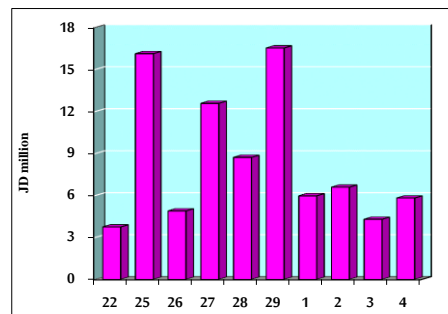
### 7- STOCK PRICE MARKET INDEX WEIGHTED BY FREE FLOAT MARKET CAP. (2012=1000)

	TUESDAY 03/09/2019	WEDNESDAY 04/09/2019	% CHANGE	
			DAY BEFORE	YTD
FIRST MARKET	958.5	949.8	-0.91%	-6.08%
SECOND MARKET	840.3	842.2	0.23%	1.27%

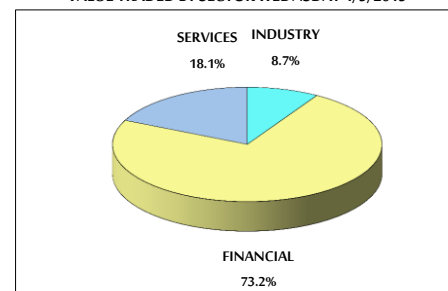
### 8- MARKET CAPITALIZATION (JD)

ASE MARKET CAPITALIZATION	14,989,024,057	14,900,178,648	-0.59%	-7.58%
---------------------------	----------------	----------------	--------	--------

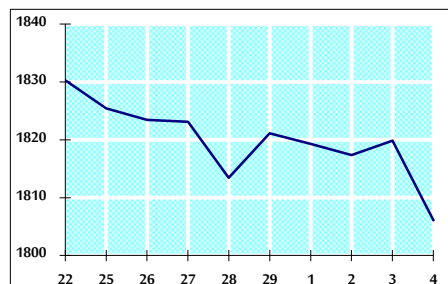
VALUE TRADED FROM 22/8 TO 4/9/2019



VALUE TRADED BY SECTOR WEDNESDAY 4/9/2019



GENERAL FREE FLOAT PRICE INDEX FROM 22/8 TO 4/9/2019



GENERAL PRICE INDEX FROM 22/8 TO 4/9/2019

