

## Daily Summary for Amman Stock Exchange

### 1- VALUE TRADED (JD)

	2018	2019	NET CHANGE	CHANGE (%)
Daily	4,421,313	3,320,229	-1,101,084	-24.90%
Cumulative(1/4-15/4)	50,541,839	44,008,232	-6,533,607	-12.93%
Cumulative(2/1-15/4)	435,152,554	398,055,815	-37,096,739	-8.52%

### 2- NO. OF SHARES TRADED

	2018	2019	NET CHANGE	CHANGE (%)
Daily	3,617,353	3,344,340	-273,013	-7.55%
Cumulative(1/4-15/4)	52,370,798	46,129,560	-6,241,238	-11.92%
Cumulative(2/1-15/4)	373,832,762	295,551,927	-78,280,835	-20.94%

### 3- NO. OF TRANSACTIONS

	2018	2019	NET CHANGE	CHANGE (%)
Daily	1,825	2,239	414	22.68%
Cumulative(1/4-15/4)	26,004	23,885	-2,119	-8.15%
Cumulative(2/1-15/4)	174,743	143,870	-30,873	-17.67%

### 4- SOME FINANCIAL RATIOS FOR THE ASE (15/4/2019)

SECTOR	P/E	P/BV	DIVIDEND YIELD (%)	TURNOVER (%)
FINANCIAL	11.780	1.043	5.461	0.057
SERVICES	17.003	1.148	4.685	0.019
INDUSTRY	18.601	1.325	0.943	0.073
OVERALL	12.185	1.124	4.650	0.050

### 5- STOCK PRICE INDEX WEIGHTED BY FREE FLOAT MARKET CAPITALIZATION (1999=1000)

	SUNDAY 14/04/2019	MONDAY 15/04/2019	% CHANGE	
			DAY BEFORE	YTD
GENERAL	1896.3	1899.5	0.16%	-0.49%
FINANCIAL	2623.3	2629.4	0.23%	-0.88%
SERVICES	1268.8	1272.4	0.28%	-0.58%
INDUSTRY	1882.2	1875.9	-0.33%	-0.36%

### 6- STOCK PRICE INDEX WEIGHTED BY MARKET CAPITALIZATION (1991=1000)

	SUNDAY 14/04/2019	MONDAY 15/04/2019	% CHANGE	
			DAY BEFORE	YTD
GENERAL	3671.7	3679.5	0.21%	-3.10%
BANKS	7754.1	7779.8	0.33%	-5.65%
INSURANCE	1344.4	1346.9	0.18%	-2.15%
SERVICES	769.4	774.6	0.68%	-2.79%
INDUSTRY	2427.3	2417.3	-0.41%	4.58%

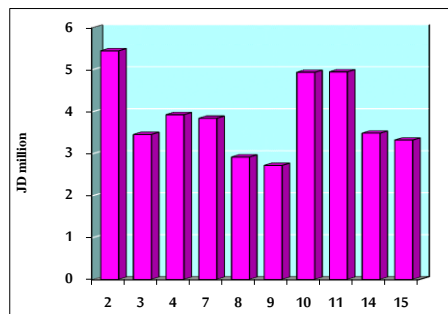
### 7- STOCK PRICE MARKET INDEX WEIGHTED BY FREE FLOAT MARKET CAP. (2012=1000)

	SUNDAY 14/04/2019	MONDAY 15/04/2019	% CHANGE	
			DAY BEFORE	YTD
FIRST MARKET	1007.5	1008.3	0.08%	-0.29%
SECOND MARKET	839.7	845.4	0.68%	1.66%

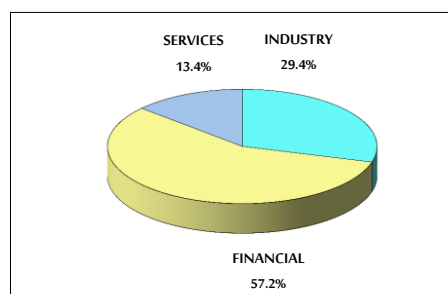
### 8- MARKET CAPITALIZATION (JD)

ASE MARKET CAPITALIZATION	15,584,816,501	15,614,187,473	0.19%	-3.15%
---------------------------	----------------	----------------	-------	--------

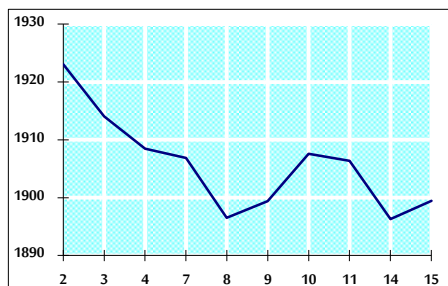
VALUE TRADED FROM 2/4 TO 15/4/2019



VALUE TRADED BY SECTOR MONDAY 15/4/2019



GENERAL FREE FLOAT PRICE INDEX FROM 2/4 TO 15/4/2019



GENERAL PRICE INDEX FROM 2/4 TO 15/4/2019

