

## Daily Summary for Amman Stock Exchange

### 1- VALUE TRADED ( JD )

	2018	2019	NET CHANGE	CHANGE (%)
Daily	6,409,935	18,190,274	11,780,339	183.78%
Cumulative(1/4-28/4)	97,355,494	126,086,607	28,731,113	29.51%
Cumulative(2/1-28/4)	481,966,209	480,134,190	-1,832,019	-0.38%

### 2- NO. OF SHARES TRADED

	2018	2019	NET CHANGE	CHANGE (%)
Daily	3,650,467	23,912,485	20,262,018	555.05%
Cumulative(1/4-28/4)	92,918,414	104,556,905	11,638,491	12.53%
Cumulative(2/1-28/4)	414,380,378	353,979,272	-60,401,106	-14.58%

### 3- NO. OF TRANSACTIONS

	2018	2019	NET CHANGE	CHANGE (%)
Daily	2,414	1,441	-973	-40.31%
Cumulative(1/4-28/4)	46,507	40,682	-5,825	-12.52%
Cumulative(2/1-28/4)	195,246	160,667	-34,579	-17.71%

### 4- SOME FINANCIAL RATIOS FOR THE ASE (28/4/2019)

SECTOR	P/E	P/BV	DIVIDEND YIELD (%)	TURNOVER (%)
FINANCIAL	11.531	1.019	5.596	0.133
SERVICES	16.276	1.099	4.932	1.098
INDUSTRY	17.736	1.263	4.311	0.077
OVERALL	11.763	1.085	5.557	0.354

### 5- STOCK PRICE INDEX WEIGHTED BY FREE FLOAT MARKET CAPITALIZATION (1999=1000)

	THURSDAY 25/04/2019	SUNDAY 28/04/2019	% CHANGE	
			DAY BEFORE	YTD
GENERAL	1879.0	1842.6	-1.94%	-3.47%
FINANCIAL	2615.2	2580.9	-1.31%	-2.70%
SERVICES	1251.8	1211.4	-3.22%	-5.34%
INDUSTRY	1838.2	1818.0	-1.10%	-3.44%

### 6- STOCK PRICE INDEX WEIGHTED BY MARKET CAPITALIZATION (1991=1000)

	THURSDAY 25/04/2019	SUNDAY 28/04/2019	% CHANGE	
			DAY BEFORE	YTD
GENERAL	3626.5	3552.0	-2.05%	-6.45%
BANKS	7739.7	7576.1	-2.11%	-8.12%
INSURANCE	1339.5	1335.0	-0.34%	-3.02%
SERVICES	748.0	741.3	-0.90%	-6.97%
INDUSTRY	2350.2	2288.7	-2.61%	-0.98%

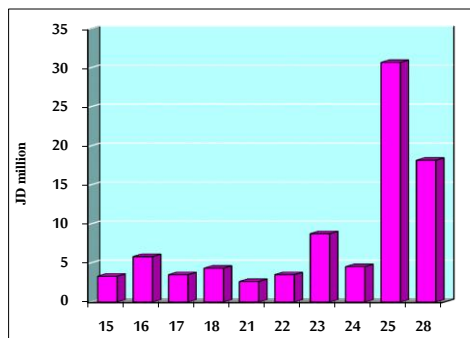
### 7- STOCK PRICE MARKET INDEX WEIGHTED BY FREE FLOAT MARKET CAP. (2012=1000)

	THURSDAY 25/04/2019	SUNDAY 28/04/2019	% CHANGE	
			DAY BEFORE	YTD
FIRST MARKET	999.8	977.6	-2.23%	-3.33%
SECOND MARKET	820.8	820.2	-0.07%	-1.37%

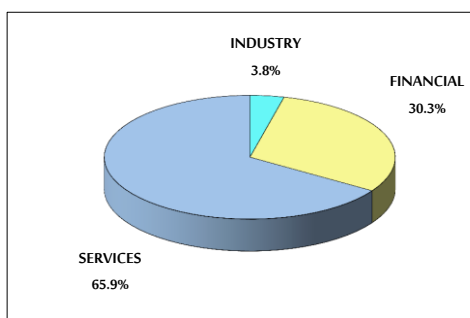
### 8- MARKET CAPITALIZATION (JD)

ASE MARKET CAPITALIZATION	15,413,943,412	15,136,378,645	-1.80%	-6.12%
---------------------------	----------------	----------------	--------	--------

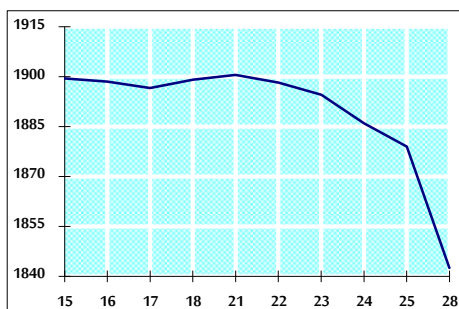
VALUE TRADED FROM 15/4 TO 28/4/2019



VALUE TRADED BY SECTOR SUNDAY 28/4/2019



GENERAL FREE FLOAT PRICE INDEX FROM 15/4 TO 28/4/2019



GENERAL PRICE INDEX FROM 15/4 TO 28/4/2019

