

## Daily Summary for Amman Stock Exchange

### 1- VALUE TRADED (JD)

	2018	2019	NET CHANGE	CHANGE (%)
Daily	12,245,009	30,707,405	18,462,396	150.77%
Cumulative(1/4-25/4)	90,945,559	107,896,333	16,950,774	18.64%
Cumulative(2/1-25/4)	475,556,274	461,943,916	-13,612,358	-2.86%

### 2- NO. OF SHARES TRADED

	2018	2019	NET CHANGE	CHANGE (%)
Daily	5,870,973	4,989,665	-881,308	-15.01%
Cumulative(1/4-25/4)	89,267,947	80,644,420	-8,623,527	-9.66%
Cumulative(2/1-25/4)	410,729,911	330,066,787	-80,663,124	-19.64%

### 3- NO. OF TRANSACTIONS

	2018	2019	NET CHANGE	CHANGE (%)
Daily	2,937	1,757	-1,180	-40.18%
Cumulative(1/4-25/4)	44,093	39,241	-4,852	-11.00%
Cumulative(2/1-25/4)	192,832	159,226	-33,606	-17.43%

### 4- SOME FINANCIAL RATIOS FOR THE ASE (25/4/2019)

SECTOR	P/E	P/BV	DIVIDEND YIELD (%)	TURNOVER (%)
FINANCIAL	11.743	1.038	5.491	0.037
SERVICES	16.539	1.117	4.853	0.066
INDUSTRY	18.096	1.289	4.225	0.267
OVERALL	12.010	1.108	5.443	0.074

### 5- STOCK PRICE INDEX WEIGHTED BY FREE FLOAT MARKET CAPITALIZATION (1999=1000)

	WEDNESDAY 24/04/2019	THURSDAY 25/04/2019	% CHANGE	
			DAY BEFORE	YTD
GENERAL	1886.0	1879.0	-0.37%	-1.56%
FINANCIAL	2617.8	2615.2	-0.10%	-1.41%
SERVICES	1264.4	1251.8	-1.00%	-2.19%
INDUSTRY	1850.6	1838.2	-0.67%	-2.36%

### 6- STOCK PRICE INDEX WEIGHTED BY MARKET CAPITALIZATION (1991=1000)

	WEDNESDAY 24/04/2019	THURSDAY 25/04/2019	% CHANGE	
			DAY BEFORE	YTD
GENERAL	3654.9	3626.5	-0.78%	-4.49%
BANKS	7748.0	7739.7	-0.11%	-6.14%
INSURANCE	1341.0	1339.5	-0.11%	-2.69%
SERVICES	754.7	748.0	-0.89%	-6.12%
INDUSTRY	2412.9	2350.2	-2.60%	1.68%

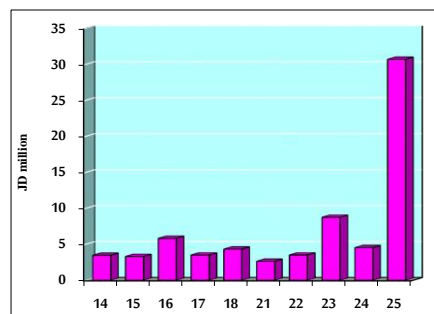
### 7- STOCK PRICE MARKET INDEX WEIGHTED BY FREE FLOAT MARKET CAP. (2012=1000)

	WEDNESDAY 24/04/2019	THURSDAY 25/04/2019	% CHANGE	
			DAY BEFORE	YTD
FIRST MARKET	1003.1	999.8	-0.33%	-1.13%
SECOND MARKET	825.4	820.8	-0.56%	-1.30%

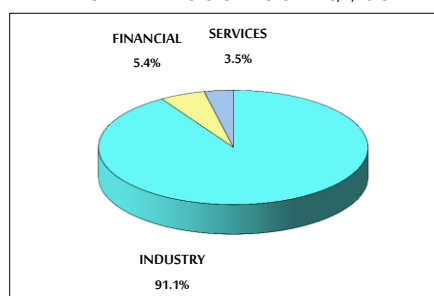
### 8- MARKET CAPITALIZATION (JD)

ASE MARKET CAPITALIZATION	15,528,216,478	15,413,943,412	-0.74%	-4.40%
---------------------------	----------------	----------------	--------	--------

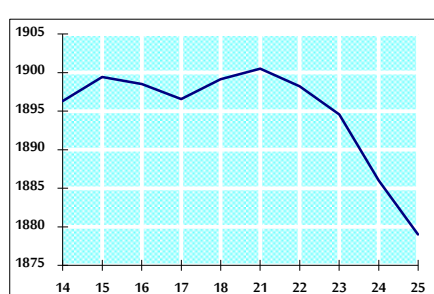
VALUE TRADED FROM 14/4 TO 25/4/2019



VALUE TRADED BY SECTOR THURSDAY 25/4/2019



GENERAL FREE FLOAT PRICE INDEX FROM 14/4 TO 25/4/2019



GENERAL PRICE INDEX FROM 14/4 TO 25/4/2019

