

Daily Summary for Amman Stock Exchange

1- VALUE TRADED (JD)

	2018	2019	NET CHANGE	CHANGE (%)
Daily	2,923,284	4,543,794	1,620,510	55.43%
Cumulative(1/4-24/4)	78,700,550	77,188,928	-1,511,622	-1.92%
Cumulative(2/1-24/4)	463,311,265	431,236,511	-32,074,754	-6.92%

2- NO. OF SHARES TRADED

	2018	2019	NET CHANGE	CHANGE (%)
Daily	3,160,791	4,863,440	1,702,649	53.87%
Cumulative(1/4-24/4)	83,396,974	75,654,755	-7,742,219	-9.28%
Cumulative(2/1-24/4)	404,858,938	325,077,122	-79,781,816	-19.71%

3- NO. OF TRANSACTIONS

	2018	2019	NET CHANGE	CHANGE (%)
Daily	2,092	1,718	-374	-17.88%
Cumulative(1/4-24/4)	41,156	37,484	-3,672	-8.92%
Cumulative(2/1-24/4)	189,895	157,469	-32,426	-17.08%

4- SOME FINANCIAL RATIOS FOR THE ASE (24/4/2019)

SECTOR	P/E	P/BV	DIVIDEND YIELD (%)	TURNOVER (%)
FINANCIAL	11.762	1.040	5.482	0.088
SERVICES	16.709	1.128	4.768	0.056
INDUSTRY	18.536	1.320	0.947	0.025
OVERALL	12.104	1.117	4.683	0.072

5- STOCK PRICE INDEX WEIGHTED BY FREE FLOAT MARKET CAPITALIZATION (1999=1000)

	TUESDAY 23/04/2019	WEDNESDAY 24/04/2019	% CHANGE	
			DAY BEFORE	YTD
GENERAL	1894.6	1886.0	-0.45%	-1.19%
FINANCIAL	2625.2	2617.8	-0.28%	-1.31%
SERVICES	1277.4	1264.4	-1.02%	-1.20%
INDUSTRY	1854.6	1850.6	-0.21%	-1.70%

6- STOCK PRICE INDEX WEIGHTED BY MARKET CAPITALIZATION (1991=1000)

	TUESDAY 23/04/2019	WEDNESDAY 24/04/2019	% CHANGE	
			DAY BEFORE	YTD
GENERAL	3666.7	3654.9	-0.32%	-3.75%
BANKS	7756.5	7748.0	-0.11%	-6.04%
INSURANCE	1339.6	1341.0	0.10%	-2.58%
SERVICES	767.6	754.7	-1.68%	-5.28%
INDUSTRY	2414.7	2412.9	-0.08%	4.39%

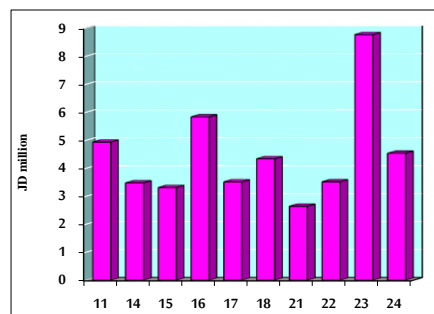
7- STOCK PRICE MARKET INDEX WEIGHTED BY FREE FLOAT MARKET CAP. (2012=1000)

	TUESDAY 23/04/2019	WEDNESDAY 24/04/2019	% CHANGE	
			DAY BEFORE	YTD
FIRST MARKET	1008.3	1003.1	-0.51%	-0.81%
SECOND MARKET	827.4	825.4	-0.23%	-0.74%

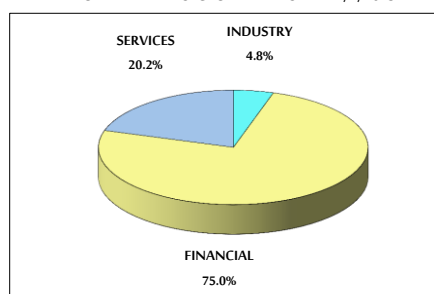
8- MARKET CAPITALIZATION (JD)

	2018	2019	NET CHANGE	CHANGE (%)
ASE MARKET CAPITALIZATION	15,576,620,391	15,528,216,478	-48,403,913	-3.69%

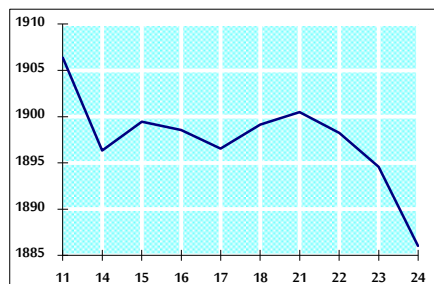
VALUE TRADED FROM 11/4 TO 24/4/2019



VALUE TRADED BY SECTOR WEDNESDAY 24/4/2019



GENERAL FREE FLOAT PRICE INDEX FROM 11/4 TO 24/4/2019



GENERAL PRICE INDEX FROM 11/4 TO 24/4/2019

